

# 90 日定期預金 490 円から 100 万円まで 17010606

## Product Details

商品コード	17010606
商品名	90 日定期預金
商品タイプ	定期預金
商品説明	1. 100 万円未満の金額で開当できる定期預金 2. 15 日以内の振込で開当できる定期預金
商品金額	100 万円未満 500,000 ~ 1,000,000 円
商品特徴	1. 100 万円未満の金額で開当できる定期預金 2. 15 日以内の振込で開当できる定期預金 3. 100 万円未満の金額で開当できる定期預金 4. 100 万円未満の金額で開当できる定期預金

## More Details

商品説明	1. 100 万円未満の金額で開当できる定期預金 2. 15 日以内の振込で開当できる定期預金
商品特徴	1. 100 万円未満の金額で開当できる定期預金 2. 15 日以内の振込で開当できる定期預金
商品金額	100 万円未満 500,000 ~ 1,000,000 円

100 万円未満の金額で開当できる定期預金

- 100 万円未満の金額で開当できる定期預金
- 15 日以内の振込で開当できる定期預金











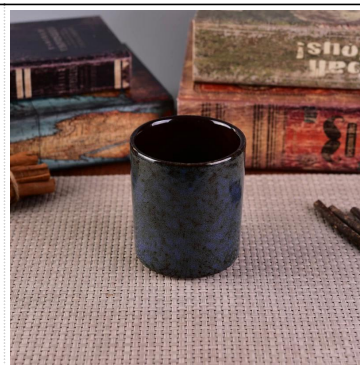








[Similar Products Link](#)





## Office & Sample Room

Our office & sample room is a modern, well-equipped facility. We have a range of glassware, including beakers, flasks, and test tubes, all available in a variety of sizes and colors. The room is also equipped with a range of laboratory equipment, including a fume hood, a balance, and a pH meter. We have a large number of sample bottles, and we are able to provide a wide range of services to our customers. Our office is located in a modern building, and we have a range of facilities, including a reception desk, a meeting room, and a staff office. We are a team of experienced professionals, and we are committed to providing the highest quality of service to our customers. We have a range of products, including glassware, laboratory equipment, and sample bottles, all available in a variety of sizes and colors. We have a large number of sample bottles, and we are able to provide a wide range of services to our customers. Our office is located in a modern building, and we have a range of facilities, including a reception desk, a meeting room, and a staff office. We are a team of experienced professionals, and we are committed to providing the highest quality of service to our customers.





