

**G** 100% 100% 100% 100% 100% 100%

100% 100% 100% **OEM / ODM** 100% 100% 100% 100% 100% 100%,  
100% 100% 100% 100% 100% 100% 100% 100% 100% 100%  
100% 100%

100% 100% 100% 100% 100% 100%, 100% 100% 100% 100% 100% 100% 100% 100% 100% 100%  
100% 100% 100% 100%



## Product Details

**Cand** 100% 100% 100% 100% 100%

- 
1. 100% 100% 100% 100%
  2. 100% 100% 100% 100% 100% 100% 100% 100% 100% 100%



□□ □□□ □□□□□□□□□□ □□□□□ □□□ □□□ □□□

---



☐ 80% 80% 80%

☐ 80% 80% 80%

☐ **80%** 80% 80% 80% 80% 80% 80% 80% 80% 80%

☐ **AQL** 80% **6** 80% 80% **QC** 80% 80%

☐ 80% 80% 80% 80% 80% 80% 80% 80% 80% 80%

☐ 80% 80% 80%

☐ 80% 80% 80%

☐ 80% 80% 80% NEST 80% 80%

☐ 80% 80% 80% 80% 80% 80%

☐ 80% 80% 80% 80%



☐ 80% 80% 80% 80% 80% 80% 80% 80%



☐ 80%  
☐ 80% 80%: 97 80%  
☐ 80% 80%: 60 80%  
☐ 80%: 80 80%  
☐ 80%: 365g  
☐ 80%: 330 80%  
☐ 80%:  
☐ 80% 80%: 98 80%  
☐ 80%: 65 80%  
☐ 80%: 210g

☐ 80% 80% 80% 80% 80%

☐ 80% 80% support☐ 80% 80%, 80% 80% 80% 80% 80% 80% 80% 80% 80% 80% 80% 80% 80% 80% 80%





## Office & Sample Room

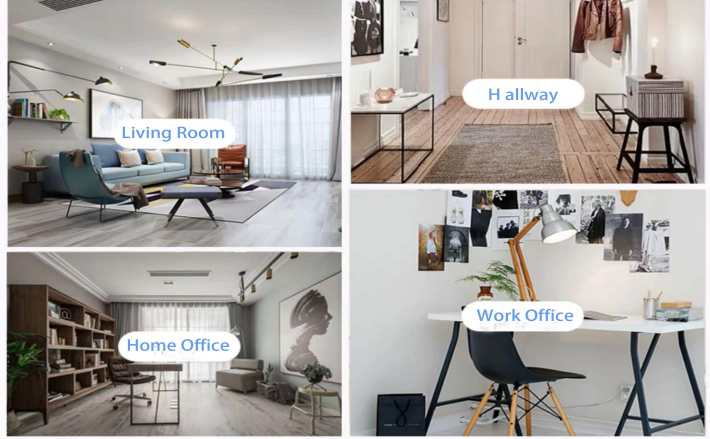
Office & Sample Room

Office & Sample Room, Office & Sample Room Office & Sample Room

Office & Sample Room Office & Sample Room

Office & Sample Room Office & Sample Room

### Range of the application



## Office & Sample Room

Office & Sample Room 1,800 Office & Sample Room Office & Sample Room





## 公司简介 公司概况

公司成立于2010年，注册资金5000万元，是一家专业从事玻璃器皿研发、生产、销售为一体的现代化企业。公司拥有一流的生产设备和专业的技术人才，产品远销国内外，深受客户好评。公司秉承“诚信、创新、服务”的经营理念，为客户提供优质的产品和服务。公司现正积极寻求合作机会，如有意向者，请洽公司市场部。



ISO9001-2015









