

26oz 咖啡杯

咖啡杯

1. 咖啡杯

2. 咖啡杯

3. 咖啡杯

4. 咖啡杯



咖啡杯 Sunny Design



Sunny History

2014-2015 04

- ▶ Apr. 2015 ISO 9001:2008 certificate
- ▶ Oct. 2014 HK trade show
- ▶ Jul. 2014 Expanded office

2008-2011 02

- ▶ Jul. 2011 Miami trade show
- ▶ Mar 2010 Invested factory in Shanxi
- ▶ Feb. 2010 London trade show
- ▶ Jun. 2008 Dubai show
Launched team building system

05 2016-2019

- ▶ 2016 Involved Ceramic products field
- ▶ Turnover reach RMB Fifty Million
- ▶ Strategic partnership signed with three high-quality glass factories
- ▶ 2017 Fifty patent products
- ▶ 2018 Bought & Moved into 1,800 m2 block
Turnover break through one hundred Million
Won IMDA design award
- ▶ 2019 Authorized GB/T 29490-2013 Enterprise Intellectual Property Management System Certification

03 2012

- ▶ Oct. Founded Sunny business college
- ▶ Aug. Las Vegas trade show
- ▶ Jul. Participated Charity Concert
- ▶ May Joined Shenzhen Network Chamber of Commerce

01 1992-2006

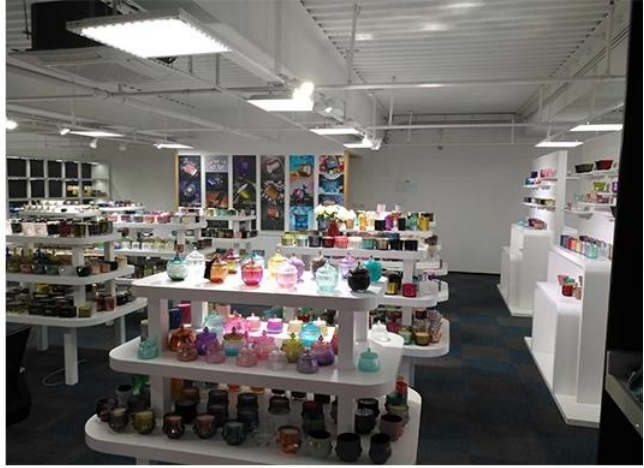
- ▶ Jun. 2006 Shanghai trade show
- ▶ Oct. 2004 Moved to new office
- ▶ Jun. 2002 Shanghai trade show
- ▶ Aug. 1992 Founded Sunny Glassware



公司自成立以来，始终秉承“以人为本，诚信经营”的经营理念，不断提升产品质量，完善售后服务体系，赢得了广大客户的信赖和支持。目前，公司已发展成为集研发、生产、销售为一体的现代化玻璃制品企业。未来，我们将继续秉承“客户至上”的服务宗旨，不断创新，追求卓越，为客户提供更加优质的产品和服务。



Sunny Glassware present more than 5,000 products, covering various types of glassware. We are committed to providing high-quality products and excellent customer service. Our products are widely used in various fields, and we have established a good reputation in the market. In the future, we will continue to innovate and improve our products to meet the needs of our customers.



IOS9001-2015



□□□□□□

□□□□□□□□□□□□□□□□□□□□□□□□ □□□□



GlasswareTechnology



□ IS Machine



□ Machine Blown



□ Machine Pressed



□ Hand-Made

□ IS Machine
 □ Machine Pressed
 □ Machine Blown
 □ Hand-Made

□□□□

□□□□□□□□

□□□□□□□□□□□□□□□□□□□□□□□□

□□□□□□□□□□

□□□□□□□□□□

□□□□□□□□1□5□10mm

□□□□4□30mm

□□□□□□□□□□□□□□

□□□□

1□□□□□□□□□□□□

2□□□□□□□□□□□□

3□□□□□□□□□□□□□□□□□□□□□□

□□□□

1□□□□□□□□□□□□□□□□□□□□

2□□□□□□□□□□□□□□□□□□□□

3□□□□□□□□□□□□□□□□□□□□

4.□□□□□□□□

5.□□□□□□□□□□□□□□□□□□□□

□□□□ □□ □□□□□□□□

□□□□□□□□ <http://www.okcandle.com/>

□□□□□□□□□□□□□□□□ □□□