

# 334

## Product Details

SGJBS17060902B	
	<ol style="list-style-type: none"> <li>1. 5</li> <li>2. 15</li> </ol>
	50 ~ 100
	<ol style="list-style-type: none"> <li>1.</li> <li>2.</li> <li>3.</li> <li>4.</li> <li>5. FDA ASTM CA 65</li> </ol>

## More Details

	<ol style="list-style-type: none"> <li>1. 35</li> <li>2. 7</li> </ol>
	<ol style="list-style-type: none"> <li>1. 30%</li> <li>2.</li> </ol>
	<ol style="list-style-type: none"> <li>x</li> <li>2.</li> </ol>

- 1.
- 2.
- 3.
- 4.
- 5.



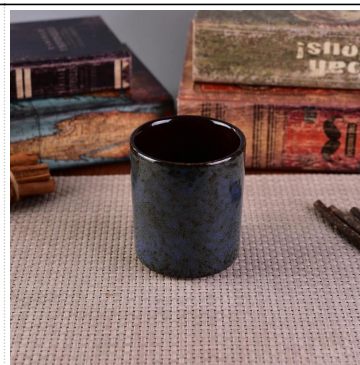








[Similar Products Link](#)





# Office & Sample Room

1992 20 4000 OEM/ODM














# ASTM







000 0000.0000000,  
 00000000: <http://www.okcandle.com/>  
 0000000000000000: 000000