

□□□□□□□□□□□□



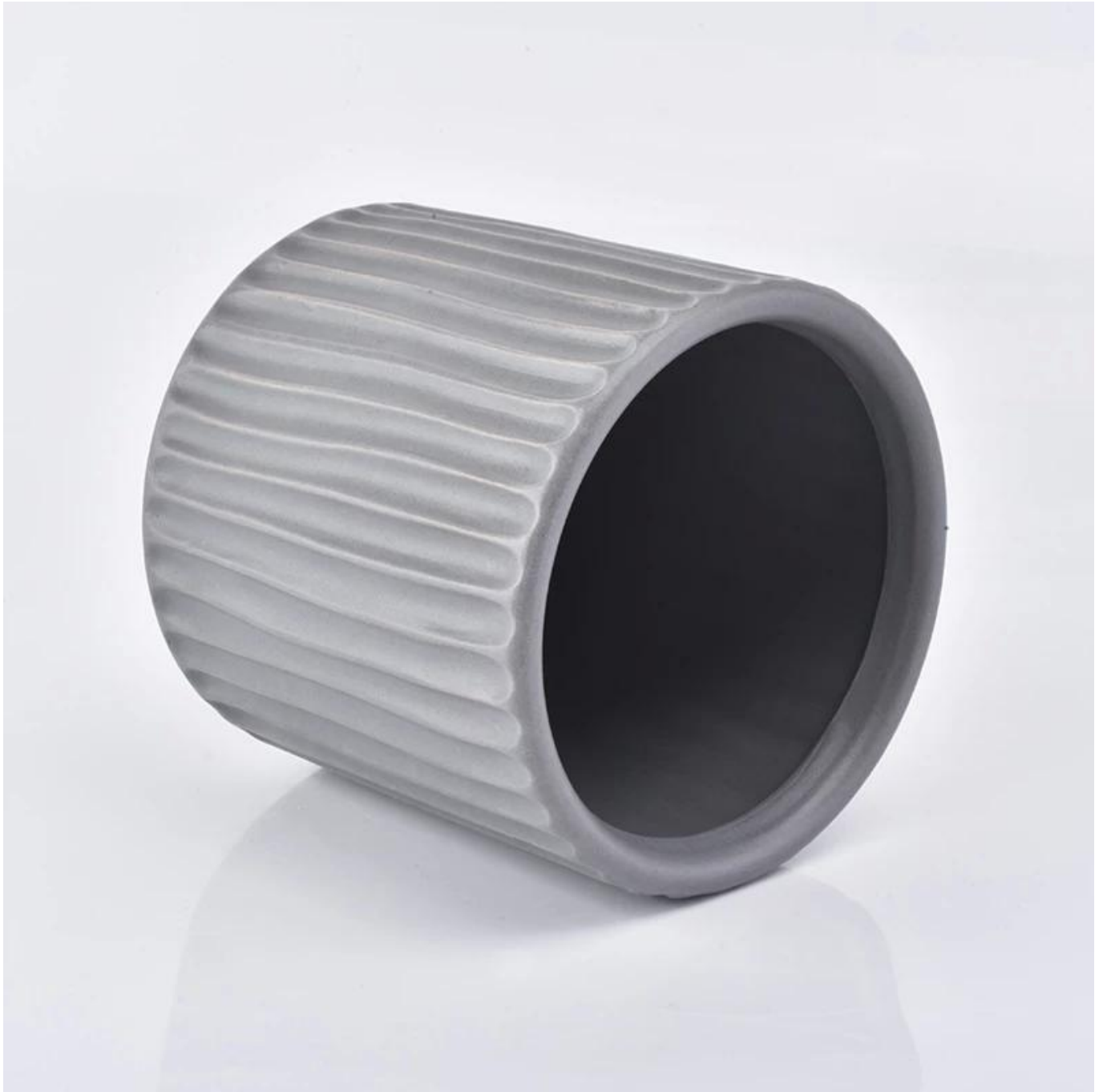
Product Details

□□□□	□□□□□□□□□□
□□□□□	SGYC19012234
□□□	□□:95□□ □□□:100□□ □□:89□□ □□:300□ □□:500□□ □□□□:5□□/ 8□□/ 10□□/ 16□□□□□□□□□□
□□	10□□14□□16□□□□□□□□□□
□□□□	□□□□□□□□□□□□1□5□ 2.15□□□□□□□□□□□□□□□□
□□	□□□□□□□□□□□□24□/ 36□/ 48□□□□□□□□□□
MOQ	3000
□□□□	□□□□□□35□□□□
□□□□	30%□□□□□□□□□□□□□□□□□□□□□□
□□□□	1. □□□□□□□□□□□□ 2. ASTM□□ 3. □□□□ 4. □□□□□□□□□□□□□□□□□□□□□□ 5. ceramic&ensp candle containers&ensp transmutation decoration □□



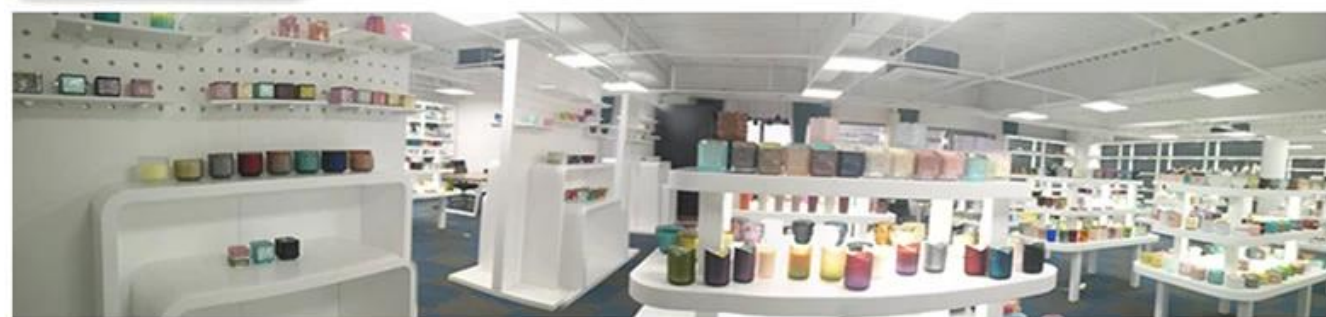
More Product Pictures






Office & Sample Room





Factory Show

* Production Process



▶ Sculpture



▶ Make Moulds



▶ Inject Clay



▶ Shape forming



▶ Roller Forming



▶ Body Finishing



▶ First Firing



▶ Hand Painting



▶ Decaling



▶ Glazing



▶ Decor Firing



▶ Packing



▶ Warehouse



▶ Loading



▶ Shipping

