

□□□□□□



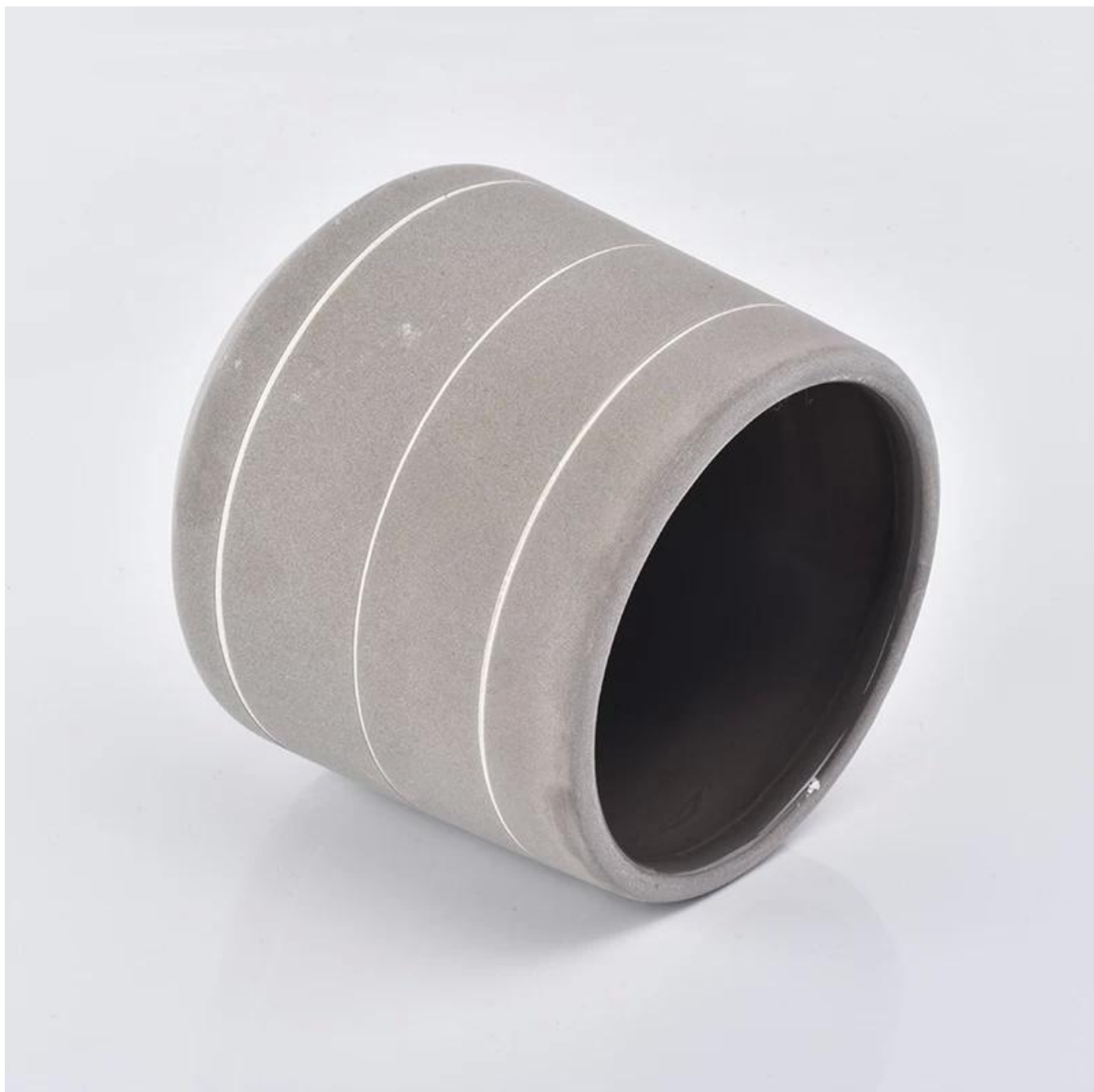
## Product Details

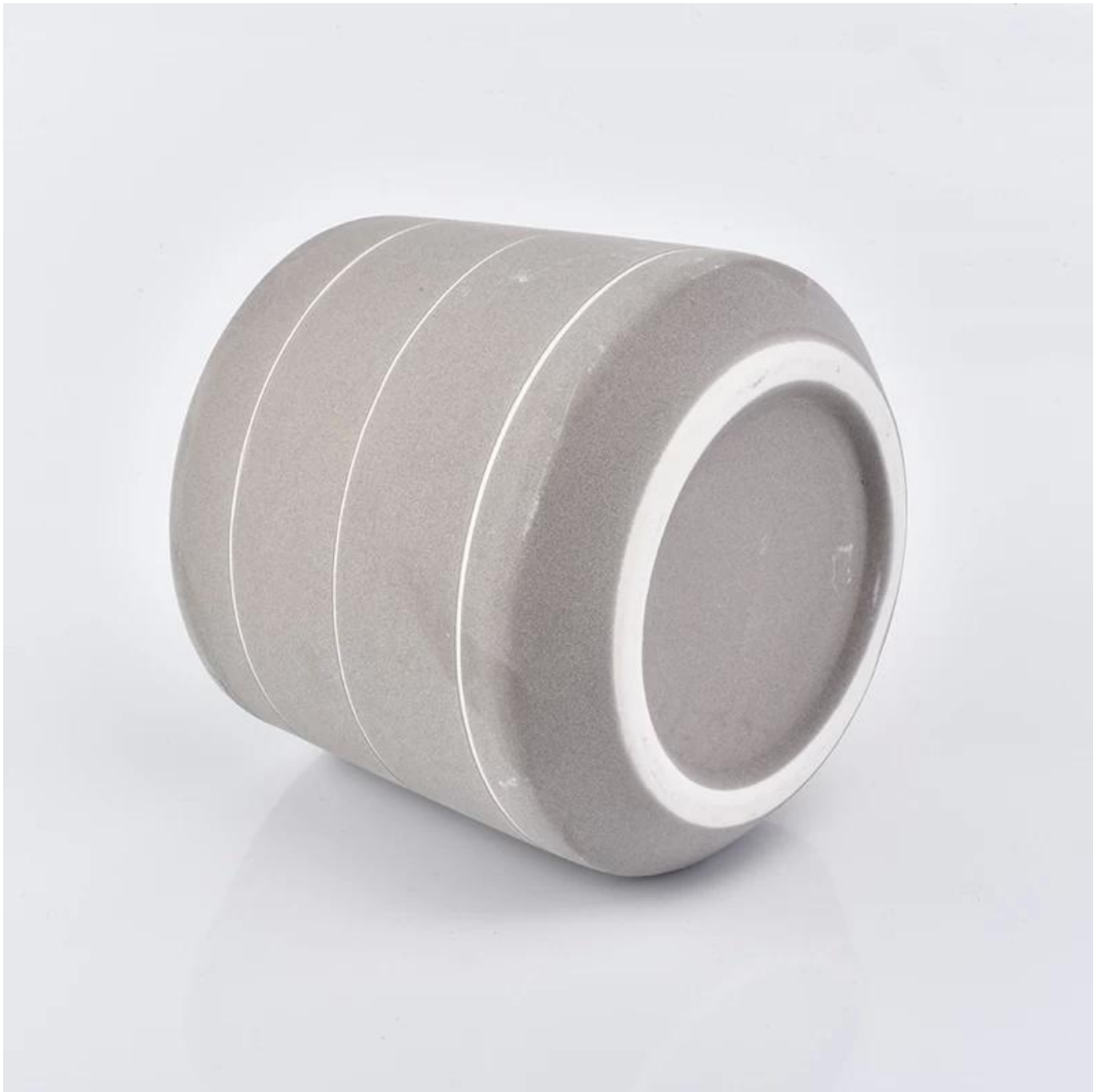
□□□□	□□□□□□□□
□□□□	SGGH19011602
□□□□	□□□□92mm □□□□103□□ □□□□93□□ □□□□252□ □□□□495ml  □□□□□5□□/ 8□□/ 10□□/ 16□□
□□	10oz 14oz 16oz□□□□
□□□□	□□□□□□□□□□□□□□□□1□5□ □□□□□□□□□□□□□□□□2.15□
□	24□/ 36□/ 48□□□□□□□□□□□□□□□□□□□□□□□□
□□□□	3000
□□□□	□□□□□□35□□
□□□□	□□30□□□□T / T□□□□□□□□□□B / L□□□□
□□□□	1.□□□□□□□□□□□□□□□□ 2. FDA□SGS□LFGB□□□□ 3.□□ 4.□□□□□□□□□□□□□□□□□□□□□□□□ 5.□□□□



## More Product Pictures











storage product ranges.

"The easiest way to spoil the look of a kitchen is uncluttered," says a spokesperson for Premier Housewares. "Getting kitchen storage that matches your design themes is essential; everything should have a place. Food that comes in flashy packaging should be in cupboard, or moved into containers, so everything in the kitchen looks like it is designed to be there."

The Grub Tub range includes polypropylene lunch boxes in a number of bright colours that have several useful features. The box has two separate containers and it comes with plastic cutlery and grips to hold them. There's a storable cup, and a cool bag big enough to hold it all. There's an elastic strap to keep the box sealed and an elastic ring inside the bag to hold the cup in place. Grub Tub also includes various shapes and sizes of air-tight, transparent, polystyrene and silicone food storage containers. It's a range for anything you can think of for lunch on-the-

### Pyrex

Hall 3.0 Stand D41

to reveal its new brand

with an ever-growing

at celebrating its 100th

is bounded to further

its Pyrex (D41) Area

d to come at Aachen

to the Pyrex brand - a

board brand that has so

popular glass was the

duct range in 1915 and

to be a highlight

Pyrex will also

ng greater metal base

new large range, while

one been added to the

of these ranges will also

has their range. Expect

with the ever-popular

and healthy cooking

[www.pyrex.com](http://www.pyrex.com)

[uk.co.uk/pyrex.com](http://uk.co.uk/pyrex.com)



For 2017, Finum is expanding its collection of two functional coffee brewers. Bloom and Flow is a new pour-over coffee and tea brewer consisting of a stylish glass carafe and a unique funnel insert which provides an optimised bloom and flow of coffee through the paper cone. Made in Germany, it comes with a funnel adapter which converts Bloom and Flow into a pour-over tea brewer.

Coffee Sprayer: a single-up coffee brewer (pictured) is the solution to ultimate freshness - place the Coffee Sprayer on a mug or cup and add ground coffee into the filter, the water distributor is inserted to press the ground coffee flat to the stainless steel mesh at the bottom. Hot water passes the ground coffee and fills the mug below the

### BergHoff

Hall 3.0 Stand D80

your brand BergHoff will ensure a maximum of attention to the

you wish has secured the best design award, which makes the

of its latest collections the award-winning design. The kitchen

from BergHoff brings style and elegance to the kitchen

the new BergHoff brings style and elegance to the kitchen

the new BergHoff brings style and elegance to the kitchen

### KitchenAid

Hall 3.1 Stand E30

KitchenAid long known for its unmatched performance, durability and iconic design of its countertop appliances, will introduce its most powerful home blender on the market. The new professional grade KitchenAid Power Plus Blender takes health conscious consumers to the next level.

For the first time since the introduction of the original The Hero Blender by Spinnaker in 1936, KitchenAid has introduced a new version of its iconic canister workhorse for a new generation of blenders with more power and performance as its top priority. Offering the same power and performance as its larger model, the Hero mixer is 20 per cent smaller and 25 per cent lighter than its 3.5 litre model. The mixer accommodates all optional hub-based attachments available for the larger model, so there are endless possibilities from grating to juicing and making pasta.

Original and in four colours - Hotteggel, Matte Black, Matte Grey and Silver - KitchenAid has some exciting new colour introductions in 2017.

[www.kitchenaid.co.uk](http://www.kitchenaid.co.uk)

### Kelqa

Hall 1.2 Stand E30, E70

introduced in 1983 and stands as a

highly innovative design, offering

style of quality products for the

home and bathroom. Kelqa's

will present for clean design

concepts, Kelqa













□□□□□□□□

1. □□□□□□□□□□□□□□□□□□
2. □□□□□□□□□□□□□□□□
3. □□□□□□□□□□□□

□□□□

1. □□□□□□□□□□
2. □□□□□□□□□□
3. □□□□□□□□□□□□□□□□□□

□□□□

1. □□□□□□□□□□□□□□□□
2. □□□□□□□□□□□□□□□□
3. □□□□□□□□□□
4. □□□□□□□
5. □□□□□□□□□□□□□□□□

□□□□ □□ □□□□□□

□□□□□□□□ <http://www.okcandle.com/>

□□□□□□□□□□□□□□□□ □□□□

□□□□□□□□□□□□□□□□.