

12



### Product Details

Product ID	SGSY17061208
Material	Stainless Steel
Finish	Brushed
Dimensions	1. 5mm thickness 2. 15mm diameter
Weight	500g - 1,000g
Specifications	<ol style="list-style-type: none"> <li>Material: 304 Stainless Steel</li> <li>Surface: Polished</li> <li>Finish: Brushed</li> <li>Compliance: FDA, ASTM, CA 65</li> </ol>



### More Details

Material	<ol style="list-style-type: none"> <li>304 Stainless Steel</li> <li>7mm thickness</li> </ol>
Dimensions	<ol style="list-style-type: none"> <li>30mm T / T / B / L</li> <li>Surface finish / Polished</li> </ol>
Options	<ol style="list-style-type: none"> <li>X / Y / Z</li> <li>Surface finish / Polished</li> </ol>

Additional Info

- \* 24h
- \*
- \*
- \*
- \*
- \*
- \* QC











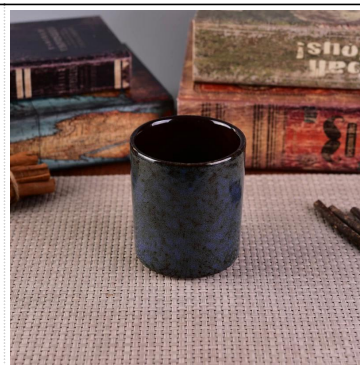








[Similar Products Link](#)

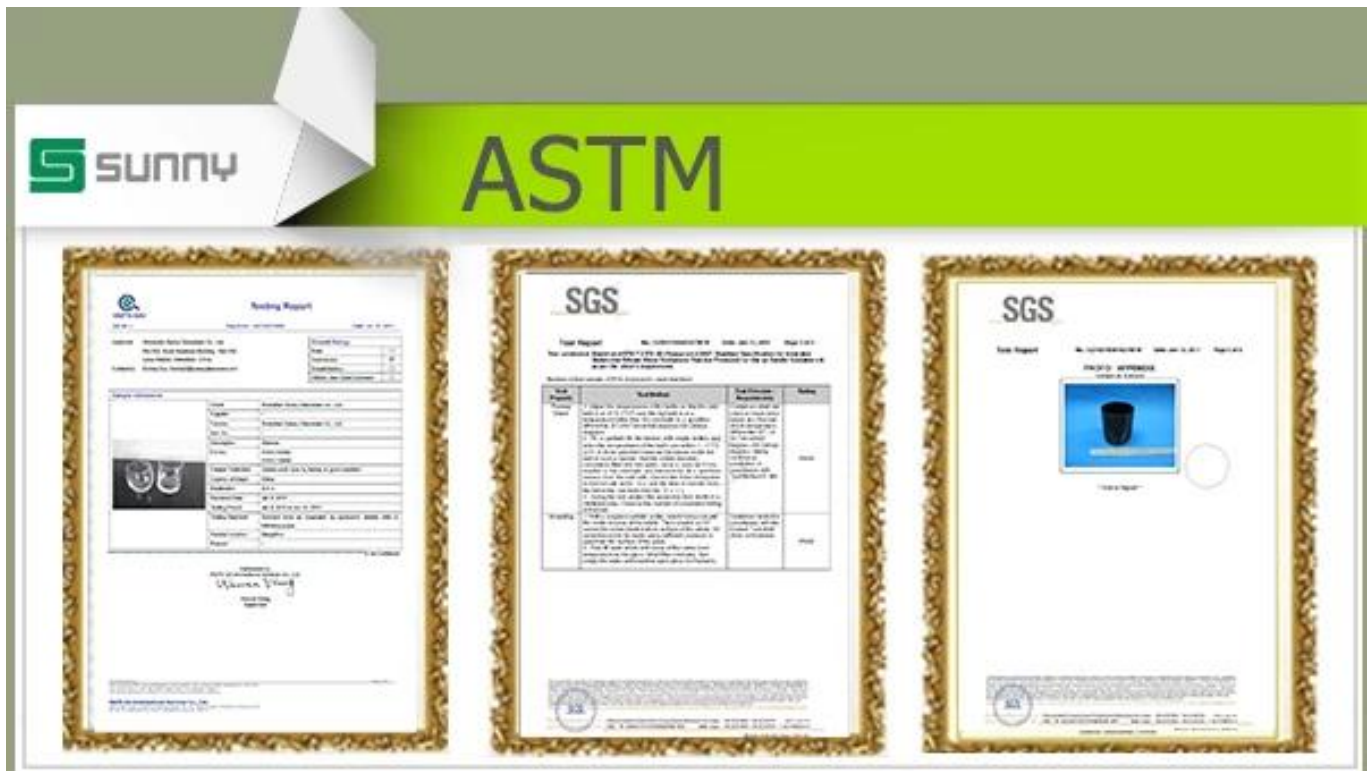


# Office & Sample Room

1992  
24  
AQL







00000 0000.00000000  
 000000000 <http://www.candleholdermanufacturer.com/>  
 000000000000000000000000 0000