

Tarros de vela de vidrio ámbar de venta caliente

Product Details

Item No	SGA79105Y
Tamaño	Diámetro superior: 79 mm Diámetro inferior: 75 mm Altura: 105 mm Peso: 300 g Capacidad: 330 ml Tarro de cristal de 2oz 4oz 6oz 8oz 10oz 12oz etc están disponibles
color	Cualquier impresión en color sobre vidrio está disponible.
Material	Vidrio
Muestra	7 días
Condiciones de pago	Depósito del 30% por T / T por adelantado y el saldo después de mostrar copia de L / C
Certificación	Prueba ASTM (para candelabro)
Por tu elección	1, cualquier logotipo impreso en el cuerpo de vidrio 2, cualquier color pintado, helado, galvanoplastia, logotipo láser para el acabado 3, embalaje especial como envoltura retráctil, caja de regalo de color, caja blanca, etc. 4, cualquier forma, tamaño satisface sus necesidades

More Product Pictures











containers, so everything in the kitchen looks like it is designed to be there. The Grub Tub range includes polypropylene lunch boxes in a number of bright colours that have several useful features. The box has two separate containers and it comes with plastic cutlery and grips to hold them. There's a sealable cup, and a cool bag big enough to hold it all. There's an elastic strap to keep the box sealed and an elastic ring inside the bag to hold the cup in place. Grub Tub also includes various shapes and sizes of air-tight, transparent, polystyrene and silicone food storage containers. It's a range for active consumers who want to have lunch on-the-go, or keep ingredients fresher for longer.

www.premierhousewares.co.uk

Pyrex

Hall 3.0 Stand D41
 Pyrex is set to reveal its new brand long with an ever-growing After celebrating its 100th that re-branded to further products. Pyrex's QMG, Alema and to share at Ambiente Kiel to the Pyrex brand - a additional brand that has so 100th anniversary. Pyrex's iconic Borocilicate glass was the product range in 1915 and continue to be a highlight Pyrex will also design popular metal bakeware new Magic range, while also have been added to the range of stove ranges will also stainless steel range. Expect line with the ever-popular fresh and healthy cooking.

www.pyrex.com
www.cookware.com



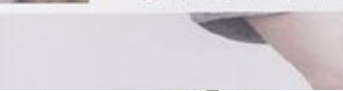
For 2017, Finurn is expanding its coffee assortment with the introduction of two functional coffee brewers. Bloom and Flow is a new pour-over coffee and tea brewer consisting of a stylish glass carafe and a unique funnel insert which provides an optimised bloom and flow of coffee through the paper cone. Made in Germany, it comes with a funnel adapter which converts Bloom and Flow into a pour-over tea brewer.

Coffee Spritzer, a single-up coffee brewer (pictured), is the solution to ultimate freshness - place the Coffee Spritzer on a mug or cup and add ground coffee into the filter; the water distributor is inserted to press the ground

Finurn 1.2 Stand A07

Hall 1.2 Stand A07
 Finurn is expanding its coffee assortment with the introduction of two functional coffee brewers. Bloom and Flow is a new pour-over coffee and tea brewer consisting of a stylish glass carafe and a unique funnel insert which provides an optimised bloom and flow of coffee through the paper cone. Made in Germany, it comes with a funnel adapter which converts Bloom and Flow into a pour-over tea brewer.

Coffee Spritzer, a single-up coffee brewer (pictured), is the solution to ultimate freshness - place the Coffee Spritzer on a mug or cup and add ground coffee into the filter; the water distributor is inserted to press the ground



Hall 3.0 Stand D80
 The new range of products is made of high quality materials and is designed to be used in a variety of ways. The range includes a range of products that are designed to be used in a variety of ways. The range includes a range of products that are designed to be used in a variety of ways.

Hall 3.1 Stand D30
 The new range of products is made of high quality materials and is designed to be used in a variety of ways. The range includes a range of products that are designed to be used in a variety of ways.

Hall 3.1 Stand D31
 The new range of products is made of high quality materials and is designed to be used in a variety of ways. The range includes a range of products that are designed to be used in a variety of ways.

Similar Products Link



Para más [portavelas de vidrio](http://www.candleholdermanufacturer.com/) o cualquier cristalería, visite nuestro sitio web: <http://www.candleholdermanufacturer.com/>

