

Rose Gold Electroplated Straight Sided Metal Candle Holders

Product Details

Item number.	SGJSB18012813
Material	Aluminum Metal Candle Holder
Craft	machine made
Samples time	1. 5 days if there is a form and size 2. 15 days, if you need a new shape and size
Product Capacity	500,000 ~ 1,000,000 pieces per month
The Features of products	1. Machine Made Aluminum Metal Candle Holder from high quality. 2. Could be sprayed any color, even silver or golden electroplated. 3. Suitable for use in hotel, house, etc. 4. Eco-friendly. 5. Meet FDA test , ASTM, CA 65 test

More Details

Delivery time	1. Within 35 days after the sample and in order confirmed. 2. Withn 7 days if we have goods in stock
Payment Terms	1. 30% deposit by T / T in advance, the balance after showing the copy of B / L 2. L/C, Escrow, T/T and Western Union can be acceptable, but different countries with different payment terms.
Packing & Shipping way	1. Normal packing, 24pcs,36pcs or 48pcs into export carton, carton with cardboard divider.Export with egg divider 2. By sea, by air, by express and the delivery agent acceptable as your requirement.

What can we do for you

1. Various designs and sizes for selection
- 2 Any color painted, cold, electroplating, laser model Processing cutter
3. Special package such as shrink film, color gift box, white gift box, etc.
4. We are exclusive of employees for quality control to promise the quality.
5. We have a professional workshop and warehouse for ensure delivery time

Usage of Product

1. Aluminum Metal candle holders can be used in wedding decoration, home decoration, party, banquet ect,
2. This candle container is very great as a gorgeous centerpiece for an event
3. The Aluminum Metal candle jars can decorate your indoors and outdoors with different effects, such as color sprayed, silver or golden electroplated.
4. The Aluminum Metal candle vessel is a wonderful gift as housewarmings and other events.

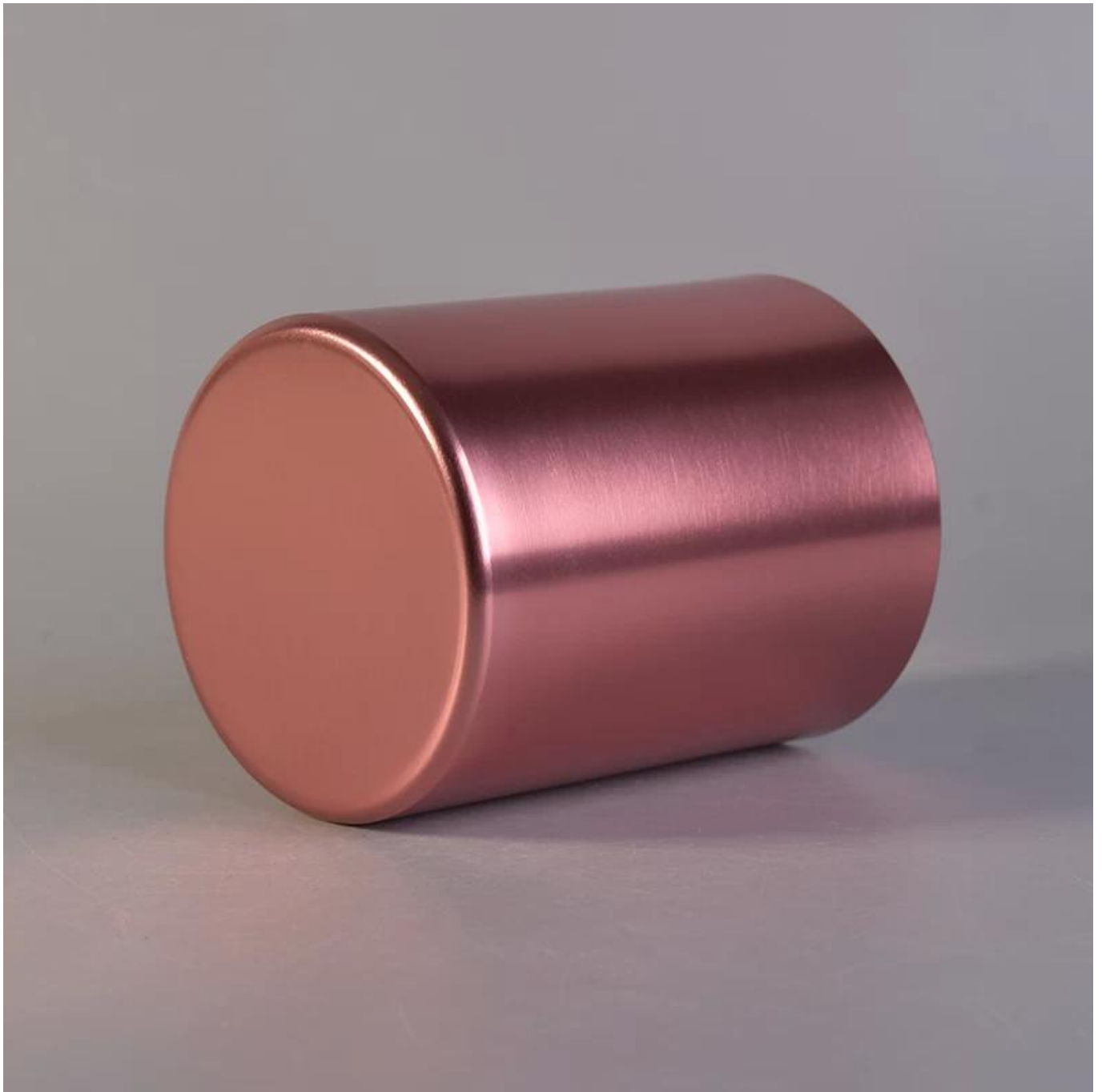


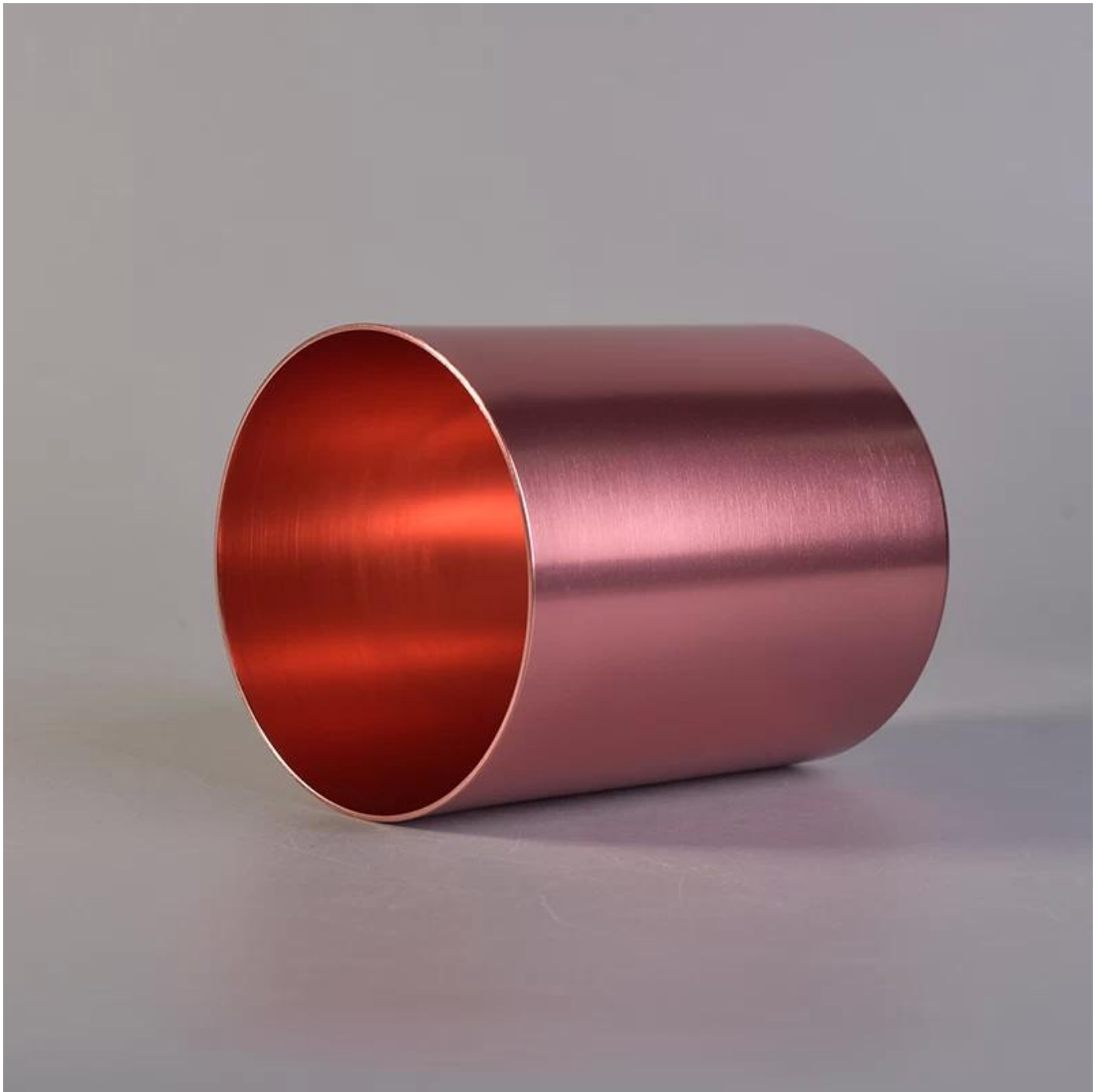
[More Product Pictures](#)



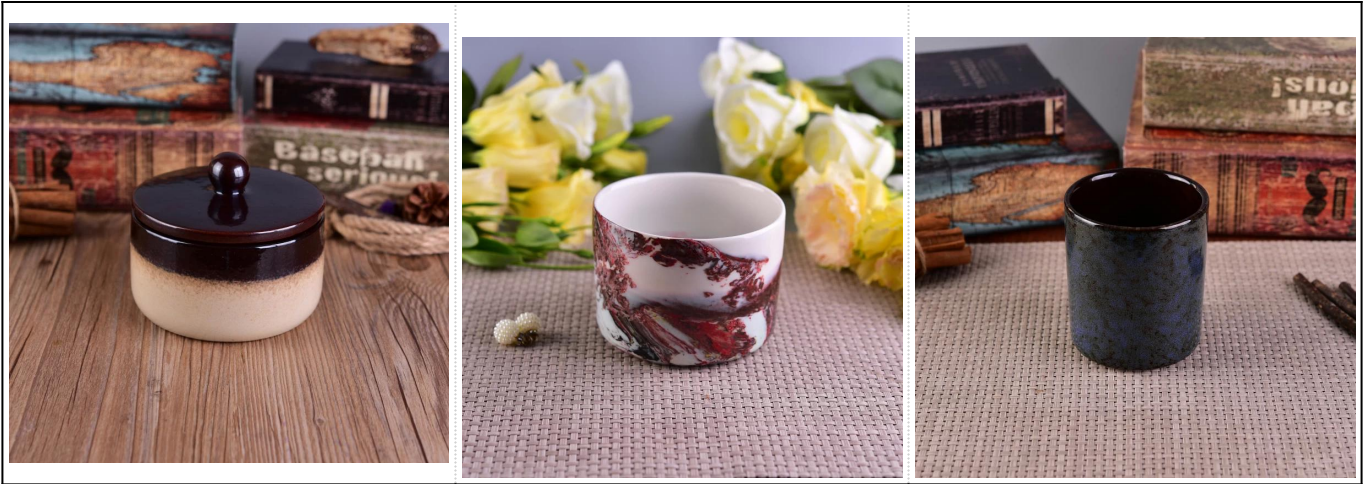








[Similar Products Link](#)



Office & Sample Room

[Shenzhen Sunny Glassware Co.,Ltd](#) was established in 1992. We have been in this industry area for more than 20 years, as a professional manufacturer, we specialized in designing glassware, manufacturing glassware as well as exporting. Our products lines range from handmade to machine made. We already produced abundant products such as [glass tumbler](#), [borosilicate glass](#), [shot glass](#), [vase](#), [bowl](#), [candle holder](#), [stemware](#), [ashtray](#), [tableware](#), [drinking glass](#), etc. all the daily use glassware, in total there are more than 4,000 different styles. We have an excellent design team for innovative product creation and strict QC team for quality assurance. OEM/ODM service are supported as well.







For more [ceramic candle holder](http://www.okcandle.com/) or any glassware,
 please visit our website: <http://www.okcandle.com/>
 Or, can help you learn more about us: [FAQ](#)