

Earraí Gloine Grianmhar ní hamháin táirgeann **OEM / ODM** orduithe, ach cuidíonn sé freisin go leor brandaí tosú as an gcoincheap táirge.



cén fáth a roghnú solas na gréine?



Buntáiste mór

Fócas ar dhearadh só

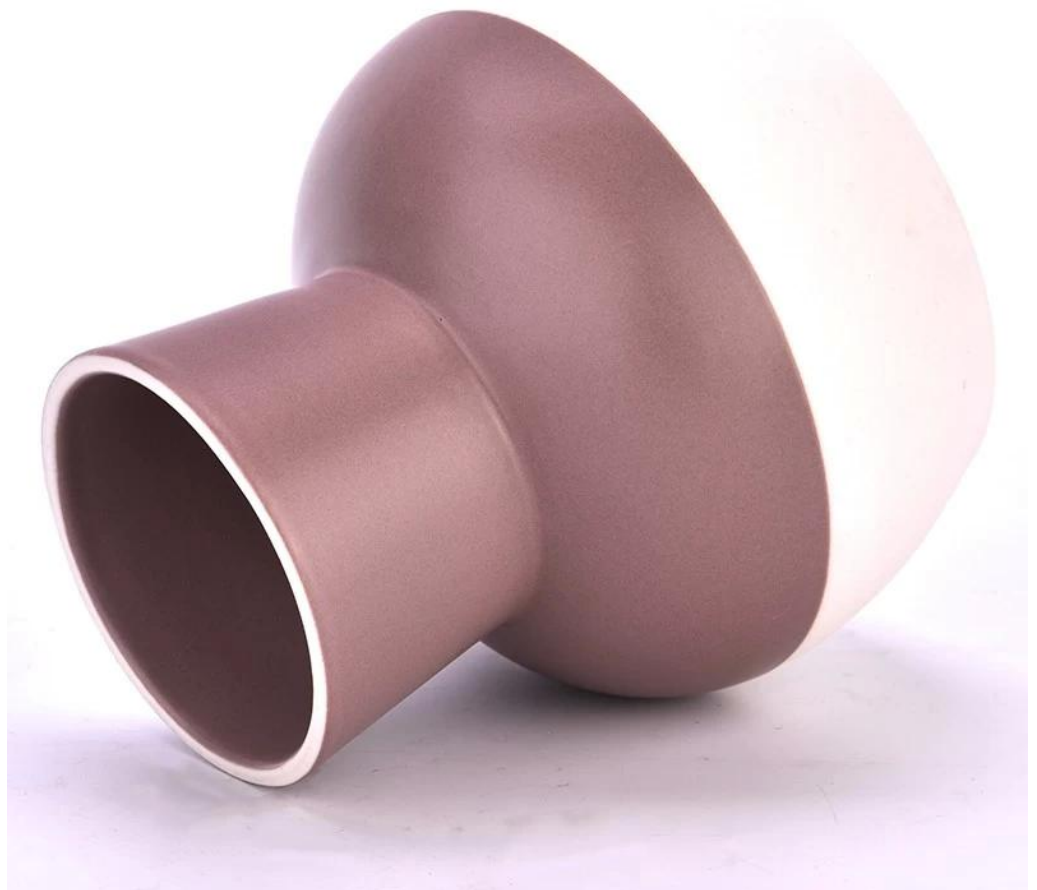
Thart ar 80% de sholáthraithe branda cumhráin Mheiriceá

. AQL móide 6 chaighdeán tástála dian QC

. Cáilíocht agus táirgí samplacha agus mórchóir a chothabháil

Uimhir na Míre:
SGMK23092102
Dia barr: 74mm
Dia bun: 54mm
Airde: 94mm
Fad uasta: 93mm
Meáchan: 243g
Cumas: 260ml
MOQ: 3,000 PCS in aghaidh an dearadh

Aistrímid do chuid smaointe isteach cruthaitheach táirgí spíosraí, díolaimid tú féin sa mhargadh áitiúil.





Feidhmchlár:

Dinnéar maisiúil sa bharrá nó sa bheár

. Oiriúnach do theaghlaigh, óstáin nó gairdíní

. Bronntanas speisialta leannán

. Aon seans maisiúcháin

Application



Festival Gifts



Home Decoration



Wedding Gifts



Christmas Gifts

Ár scéal

Company Profile



Sunny Glassware was established by Frank and Alice for more than 25 years, which provide a leading excellent combination between prices, quality & responsiveness in glassware industry.

Sunny keep engaged in glassware designing and manufacturing, there are more than 10 product lines available from hand blown craft to machine pressed, machine blown and IS machine made etc., and various kinds of deep processing technologies can be customized such as color sprayed, laser printing, decal print, electroplate, frosted, screen printing, sandblasted and ion plating etc. **ISO 9001:2008/2015, Enterprise Intellectual Property** and **Green & Social Compliance Statement** certificates were issued by the third-party certification companies.

There are about 5,000 items which cover all daily-used glassware and ceramic ware, e.g. candle holders, borosilicate glass, bottles, tumblers, jars, stemware, tableware & drinkware, bathroom accessories etc. The products can meet **FDA, LFGB, CA 65, ASTM, dishwasher test**.

With a strictly control system on product quality and customer service, our exporting market have expanded rapidly to North & South America, Europe, Oceania and Asia.

Our business scopes are mainly involved in home decor, gift crafts and tableware. There are **approximately 80% candle holders in USA luxury branded companies were imported from Sunny Glassware**.

Cad atá muid ann?

Cheadaigh SUNNY GLATWARES deimhniú córas bainistíochta cáilíochta ISO 90012008/2015, agus chuir siad caighdeán maoin intleachtúla na cuideachta i bhfeidhm chun leasanna a gcustaiméirí a chosaint.

中国制造之美
Manufacturing Excellence
& Innovation Awards



2017-2018
入围奖
Selected Award

六角回纹香蜡罐

Hexagon meander scent glass candle jar

美阳玻璃制品有限公司

SUNNY GALAWARE CO., LTD.

主办方
Made-in-China.com
中国制造网



贸易推广交流中心

合作机构



必维国际检验集团

SGS

SGS通标标准技术
服务有限公司



TUV南德意志集团

PACKAGING & SHIPPING



FAQ

Q1: Do you accept small order?

Yes, any quantity would be acceptable if we have stocks.

Q2: Do you have any other colors/sizes for this kind of jar?

Any colors can be customized according to pantone number or your sample, the we have some hot sale regular sizes for you to choose, if you want to make new sizes we can also open new molds.

Q3: What kind of lids you can offer?

We can provide lids in different materials like glass, ceramic, metal, wood, concrete and plastic ect.

Q4: Do you have certification for your products?

Yes, for the glassware, have ASTM. CA65 test , FDA etc.

Q5: Do you accept Third party inspection?

Yes,we accept it.It's the normal way for many clients.

Q6: How to ensure the production quality is what I need?

We will do the production and inspect the goods by sample we both approved. If you have more requirement for the product quality,we should discuss the quality standard before we place the order.

Q7: How could I get a sample?

We offer free samples for those we keep in stock, for custom samples we need 7~10 to get samples ready. Sample fee could be pay by Paypal, Alibaba, or bank.

Q8: What's your MOQ of ceramic jars?

The moq of a single order is 3000 pcs, 1000 pcs each color is acceptable

Q9: Why your sample cost is so expensive?

Sample cost is mainly for labor cost, it is not equal to unit price.

Q10: Could you arrange shipment for us together?

Yes, we can. We have a professional logistics department which help many of our customers handle shippments, if you need we arrange shipping, please tell us your company or warehouse address and we can quote DDU price to you check together

