

# Wholesale 6oz 8oz 10oz 12oz 14oz 16oz straight line jar with customized color with dropper effect on Glass Jars for candle making

## Product Details

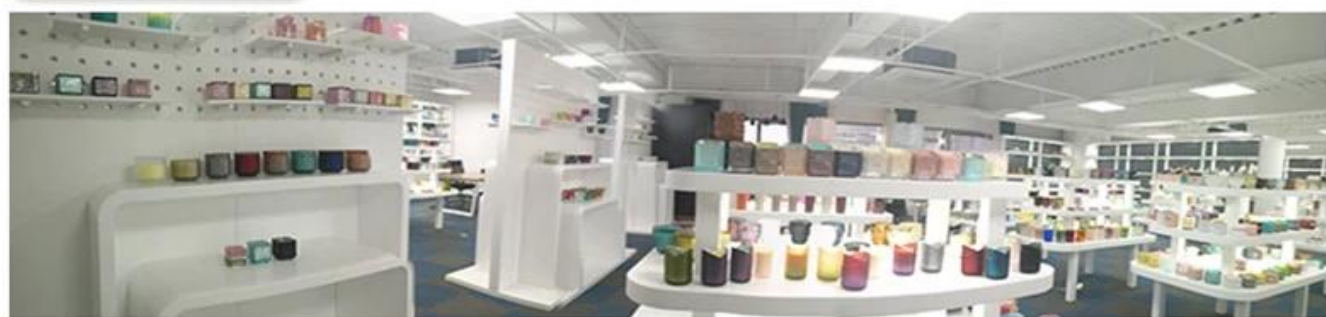
Element name	Wholesale 6oz 8oz 10oz 12oz 14oz 16oz straight line jar with customized color with dropper effect on Glass Jars for candle making
Sampling time	1.5 days if the shape and size of the products exist 2.15 days if you need new shape and size of the products
Packaging	24pcs / 36pcs / 48pcs regular safety packing and so on For export carton with egg divider
MOQ	20000pcs
Delivery time	Within 35 days after the order confirmed
Payment terms	30% deposit by T / T in advance, the balance after showing the copy of B / L
Product features	<ol style="list-style-type: none"><li>1. High quality and competitive prices</li><li>2. Testing FDA, SGS, LFGB etc.</li><li>3. Eco Friendly</li><li>4. It is widely aimed at Wedding, party, home, bars etc.</li><li>5. Machine made</li></ol>

## More Product Pictures



## Office & Sample Room





Factory Show



01

## Factory



## Surface Treatment

10+ production lines



□ Spraying



□ Engraving



□ Electroplating



□ Silk-screen



- Spraying
- Engraving
- Electroplating
- Silk-Screen



### The characteristics of the blown glass a month

1. Its advantage including sculpture of abundance, techniques, surface effects, color etc.
2. Quality is a difficult check and tolerance of size, weight and shape is greater.
3. The price is high and the product is limited for special technical glass.

### Application method

1. Using it under the guidance of the adult
2. Wash it with clean or hot water before use
3. Do not touch the edge of the glass cup, try taking the bottom or the handle of it

### Precautions

1. Beer, red wine, white wine, drink or hot water should not be too full
2. To avoid hurting your children's hand, please put them where they can not reach
3. Avoid falls, collision and strong impact
4. Not available for microwave oven
5. To prevent it from breaking, do not put it directly on the fire

For more [candle holder](#) or any glass,

Please visit our website:<http://www.okcandle.com/>

Or here it can help you know better than us: [FAQ](#)

[We await your request and cooperation.](#)

[Homepage back](#)