

## Portacandele in ceramica da 20 onces con motivo a cresta in rilievo



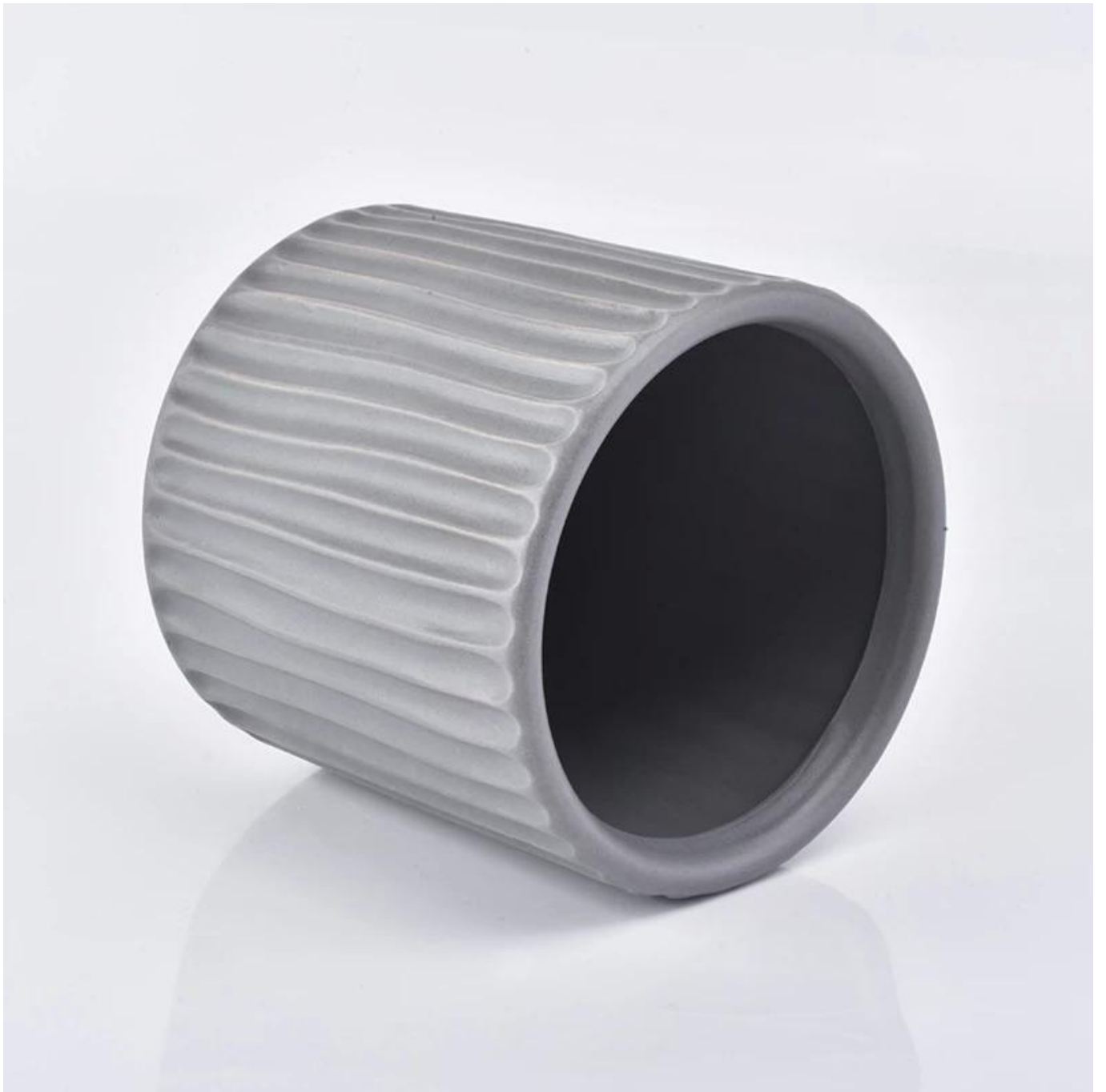
### Product Details

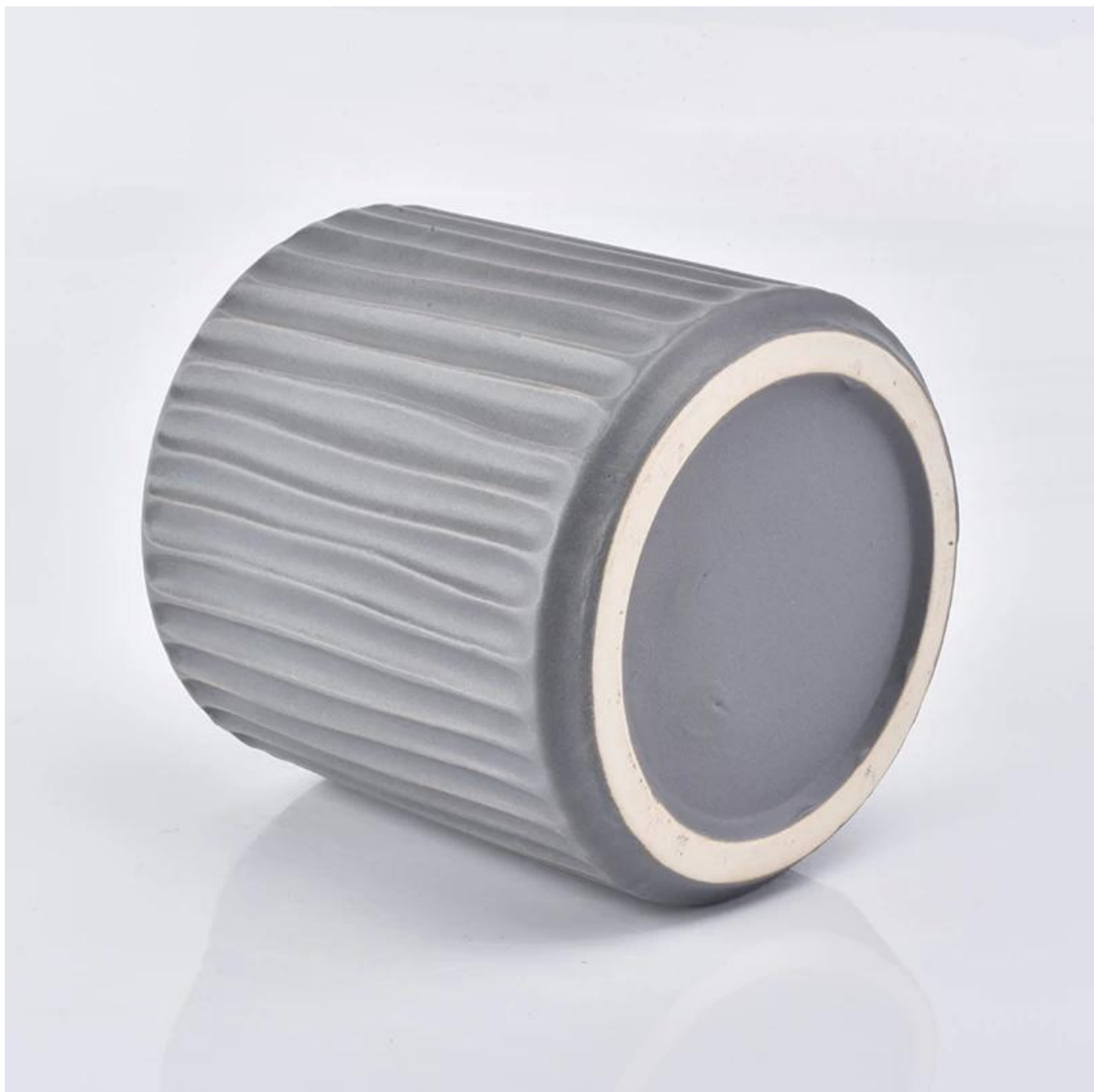
|                              |  |
|------------------------------|--|
| Nome del prodotto            | Portacandele in ceramica da 20 onces con motivo a cresta in rilievo  |
| Codice articolo.             | SGYC19012240   |
| Taglia                       | Diametro superiore: 100 mm<br>Diametro inferiore: 100 mm<br>Altezza: 100 mm<br>Peso: 350 g<br>Capacità: 580 ml   |
| Capacità                     | 580ml  |
| Tempo di campionamento       | 1,5 giorni se esistono la forma e le dimensioni dei prodotti<br>2,15 giorni se hai bisogno di una nuova forma e dimensione dei prodotti  |
| Confezione                   | Imballaggio di sicurezza regolare 24 pezzi / 36 pezzi / 48 pezzi con divisore per uova   |
| MOQ                          | 3000 pezzi   |
| Tempo di consegna            | Entro 35 giorni dalla conferma dell'ordine   |
| Termini di pagamento         | Deposito del 30% da T / T in anticipo, il saldo dopo aver mostrato la copia di B / L.  |
| Caratteristiche del prodotto | <ol style="list-style-type: none"><li>1. Alta qualità e prezzi competitivi</li><li>2. Test di FDA, SGS, LFGB ecc.</li><li>3. Eco Friendly</li><li>4. È ampiamente destinato a matrimoni, feste, casa, bar ecc.</li></ol> |



### More Product Pictures













**Tradition**  
**innovation**

...and globally for its premium products and res...  
...when it comes to our side products, Danish...  
...comes to 80th anniversary in 2016

...of today's kitchen trends...  
...if there has been with...  
...company for more than 20...  
...and the beautiful design...  
...modern and low-cost...  
...Our customers have the...  
...value of the product. It is...  
...from the latest aluminum...  
...finished cookware. Our Ma...  
...between production and...  
...has been a major focus...  
...through to their own...  
...progress to build experie...  
...and knowledge about the...  
...expected, a customer in the...  
...production line.

**Did you know...?** SCANPAN was founded...  
...by a Danish chef in 1946...  
...the history of Scan...  
...the everyday work...  
...every worker, up to the...  
...the kitchen eye...  
...coordination and critical...  
...reflection essential to every...  
...step in our production – or the...  
...proud traditions of craftsmanship...  
...reflected in our finished products.\*

**Sustainable materials**  
Customers are also guaranteed...  
an environmentally-friendly

**hand”**

Every SCANPAN aluminum product is cast by hand and goes through eight sets of hands. The minutely-controlled process begins with recycled aluminum, from scrap or cans, which is melted down.

handle and, after a final quality check, the product is packed in recycled materials and prepared for sale.

Polishing with Danish beeswax continues to be an important part of the finishing process for SCANPAN's pressure-cast frying pans.

**Introduci**  
**Maire D**

SCANPAN's Maire D series includes a modern range of cookware and pieces of stainless steel and aluminum. The range is designed to offer a multi-use construction of steel and aluminum for the perfect heat distribution to protect your dishes.

Our steel base for maximum conductivity and copper handles design make cooking easy from a dry heat on to high-heat searing. Steel handles are made from a high-quality stainless steel with a long life span.

SCANPAN's Maire D series is designed to offer a modern range of cookware and pieces of stainless steel and aluminum. The range is designed to offer a multi-use construction of steel and aluminum for the perfect heat distribution to protect your dishes.

Our steel base for maximum conductivity and copper handles design make cooking easy from a dry heat on to high-heat searing. Steel handles are made from a high-quality stainless steel with a long life span.

Office & Sample Room









[Pagina iniziale indietro](#)