

# 26

- 1
- 2
- 3
- 4





□□□□□□□□

□□□□□□□□□□□□□□□□

□□□□**80**□□□□□□□□□□□□□□□□

□ **AQL plus6Sunny**□□□□QC□□□□

□ □□□□□□□□□□□□□□□□□□

□□

□□□□□□□□□□

□ □□□□□□□□□□□□□□□□

□ NEST□□□□□□□□□□□□

□□□□□□□□□□□□

□□□□□□□□□□□□□□



□□□□□□□□□□□□□□□□

□□□□dia□132□□

□ □□□**144**mm

□ □□□ 93□5mm

□ □□□ 9006ml□26oz□□□□□□□

□ □□□ 602g

□□□□□□□□□□□□□□□□□□

□□□□□□□□□□□□□□□□□□□□□□□□□□□□□□□□□□

□□□□□□□□□□

□



# Sunny History

## 2014-2015 04

- Apr. 2015 ISO 9001:2008 certificate
- Oct. 2014 HK trade show
- Jul. 2014 Expanded office

## 2008-2011 02

- Jul. 2011 Miami trade show
- Mar 2010 Invested factory in Shanxi
- Feb. 2010 London trade show
- Jun. 2008 Dubai show  
Launched team building system

## 05 2016-2019

- 2016 Involved Ceramic products field
- Turnover reach RMB Fifty Million
- Strategic partnership signed with three high-quality glass factories
- 2017 Fifty patent products
- 2018 Bought & Moved into 1,800 m2 block  
Turnover break through one hundred Million  
Won IMDA design award
- 2019 Authorized GB/T 29490-2013 Enterprise Intellectual Property Management System Certification

## 03 2012

- Oct. Founded Sunny business college
- Aug. Las Vegas trade show
- Jul. Participated Charity Concert
- May Joined Shenzhen Network Chamber of Commerce

## 01 1992-2006

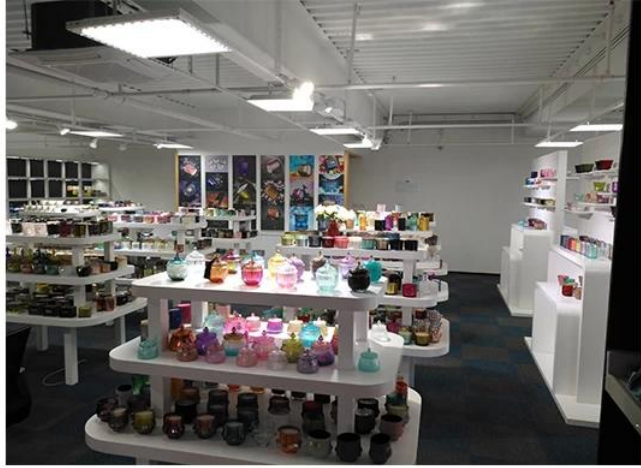
- Jun. 2006 Shanghai trade show
- Oct. 2004 Moved to new office
- Jun. 2002 Shanghai trade show
- Aug. 1992 Founded Sunny Glassware



growth Their engergetic



Sunny Glassware present more than 5,000



ASTM



IOS9001-2015



Green Social

# OK Candle

OK Candle is a leading manufacturer of candles and candle holders. We are looking for new partners to expand our business. Please contact us for more information. [OK Candle](#)



## Glassware Technology



IS Machine



Machine Blown



Machine Pressed



Hand-Made



- IS Machine
- Machine Pressed
- Machine Blown
- Hand-Made

### Product

OK Candle is a leading manufacturer of candles and candle holders.

OK Candle is a leading manufacturer of candles and candle holders. We are looking for new partners to expand our business.

MOQ: 1000

Price: \$0.15 - \$0.25

Size: 10x5x10mm

Color: 4x30mm

Material: Glass

### Service

1. Free quotation

2. Free sample

3. Free design

### FAQ

1. How long does it take to produce?

2. What is the MOQ?

3. Can you customize the design?

4. What is the price?

5. How long is the lead time?

Contact us: [info@okcandle.com](mailto:info@okcandle.com)

Website: <http://www.okcandle.com/>

