

# 370ml

## Product Details

SGSY17061211	
	<ol style="list-style-type: none"> <li>1. 5</li> <li>2. 15</li> </ol>
	500,000 1,000,000
	<ol style="list-style-type: none"> <li>1. <a href="#">SGSY17061211</a></li> <li>2.</li> <li>3.</li> <li>4. FDA ASTM CA65</li> </ol>

## More Details

	<ol style="list-style-type: none"> <li>1. 35</li> <li>2. 7</li> </ol>
	<ol style="list-style-type: none"> <li>1. T / T30 B / L</li> <li>2. L / C T / T</li> </ol>
	<ol style="list-style-type: none"> <li>1.</li> <li>2.</li> </ol>

- \* 24
- \*
- \*
- \*
- \*
- \*
- \* QC

## AQL

\*15

\*

## 

1.

2. / / / KTV

3.

4.

5. MOQ

## 

1.

2.

3.

4.



More Product Pictures













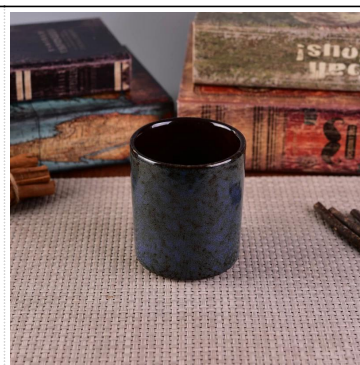








[Similar Products Link](#)





# Office & Sample Room

1992  
24  
EU/AU  
QC  
AQL







