

□□□ □□ □□ □□ □□□



## Product Details

Product Name	□□ □□ □□ □□□ □□
□□ □□	SGGH19011601
□□	□□ □□ : 88mm □□ □□ : 80mm □□ : 98mm □□ : 242g □□ : 400ml
□□□ □□	□□□ □□□ □□□ □□□□ □□ 1.5 □ 2.15 □ □□□ □□□ □□□ □□□ □□
MOQ	1000
□□ □□	□□ □□ □ 35 □ □□
□□ □□	□□ T / T□ □□□ 30 % □□, B / L□ □□□ □□□□ □□ □□
□□ □□	1. □□□□ □□ □□ 2. FDA, SGS, LFGB □□□ □ 3. □□□ 4. □□ □□□, □□, □□, □ □□ □□□ □□□□□□. 5. Machine made glass candle □□



## More Product Pictures





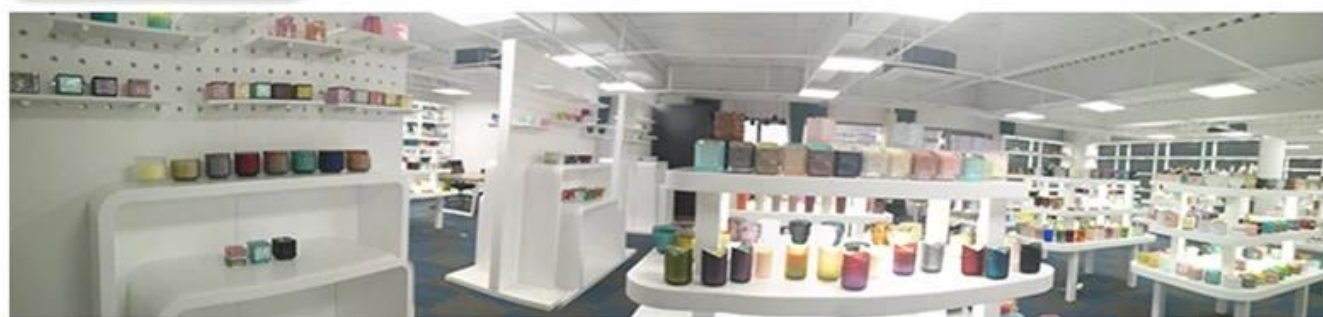






  
Office & Sample Room





Factory Show



01

## Factory



## Surface Treatment

10+ production lines



□ Spraying



□ Engraving



□ Electroplating



□ Silk-screen



- Spraying
- Engraving
- Electroplating
- Silk-Screen

