

□□ □□ □□ □□ □□



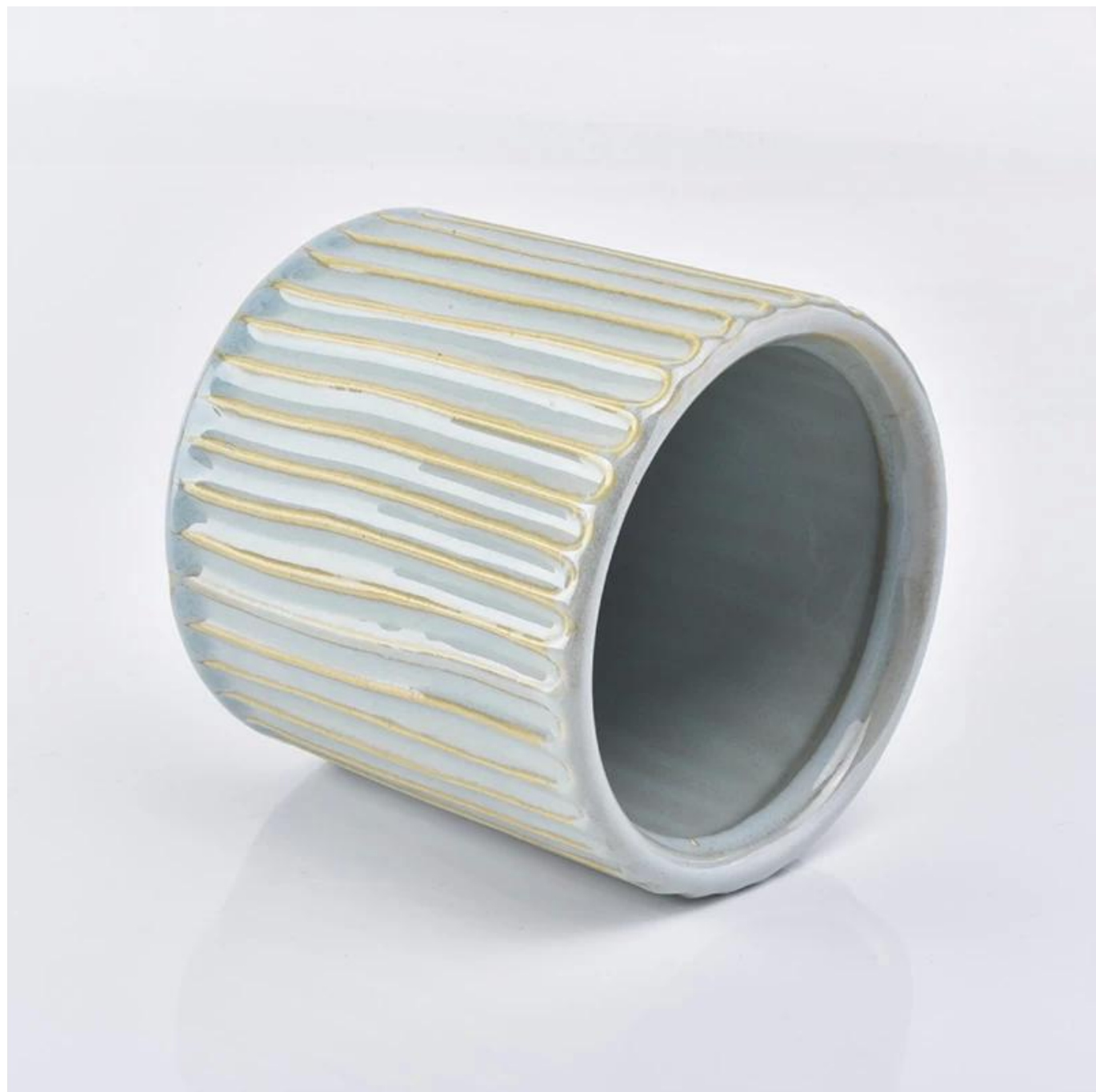
Product Details

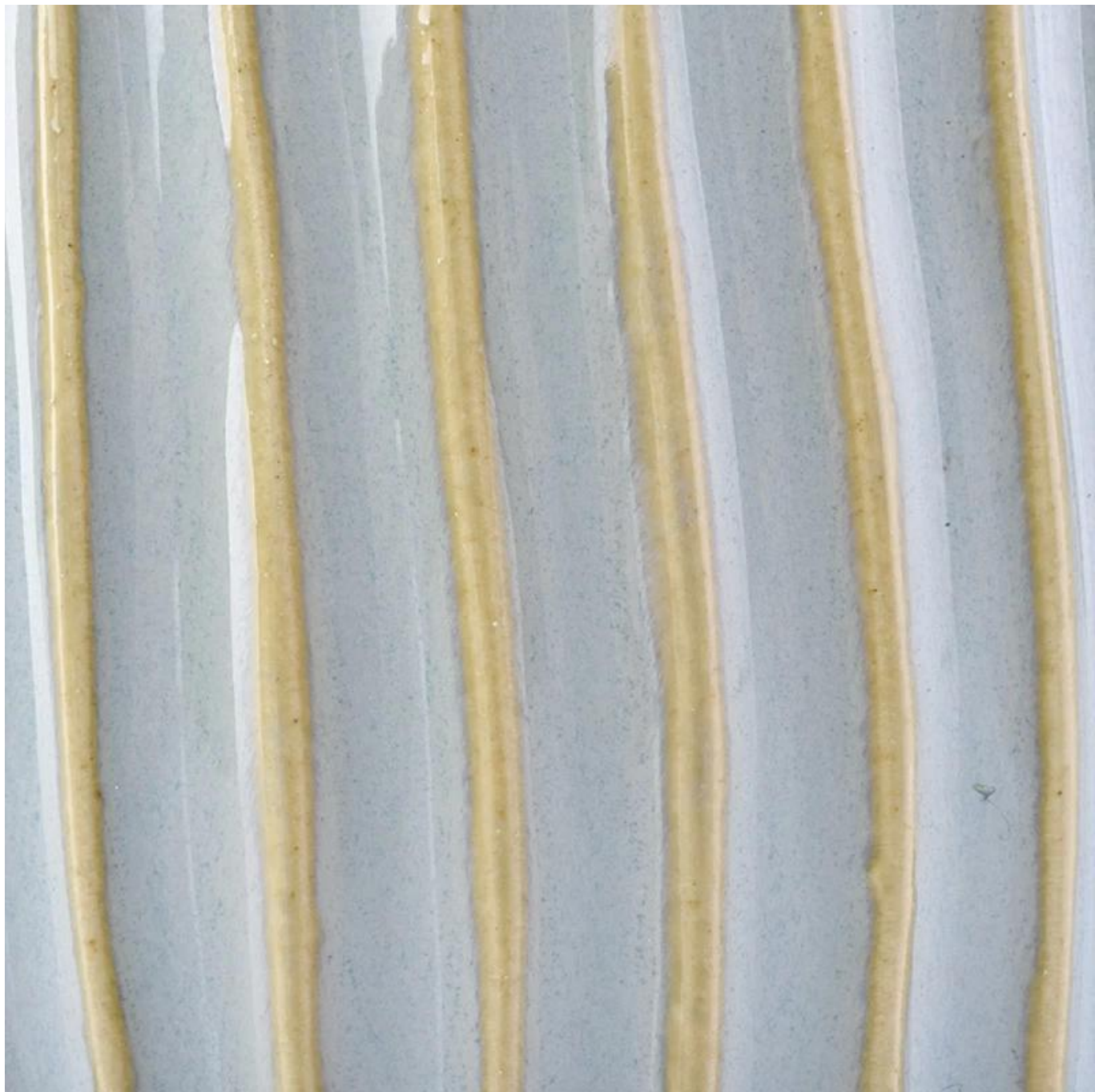
□□ □□	□□ □□ □□ □□ □□
□□ □□	SGYC19012238
□□	□□ □□ : 100mm □□ □□ : 100mm □□ : 100mm □□ : 350g □□ : 580ml
□□ □□	10oz 14oz 16oz □□. □□□ □□□□□
□□□ □□	□□□ □□□ □□□ □□□ □□ 1.5 □ □□□ □□□ □□□ □□□ □□□ □□ 2.15 □
□□□	24pcs / 36pcs / 48pcs □□□ □□ □□ □□. □□ □□□□ □□ □□ □□□ □□
MOQ	5000pcs
□□ □□	□□ □□ □ 35 □ □□
□□ □□	□□ T / T□ □□□ 30 % □□, B / L□ □□□ □□□□ □□ □□
□□ □□	<ol style="list-style-type: none">1. □□□□ □□ □□2. FDA, SGS, LFGB □□□ □3. □□□4. □□ □□□, □□, □□, □ □□ □□□ □□□ □□□□.5. machine made glass candle □□



More Product Pictures









hand
Every SCANPAN aluminum product is cast by hand and goes through eight sets of hands. The minutely-controlled process begins with recycled



dition
ovatio
by its premium products and rec...
... in 2016

... a completely
... can
... and critical
... or the
... products*

... the high temperature
... the pot or
... pan is equipped with a robust
... handle and, after a final quality
... check, the product is packed in
... recycled materials and prepared
... for sale.
... Polishing with Danish
... beeswax continues to be an
... important part of the finishing

... the impact of
... stainless steel,
... copper
... SCANPAN here
... includes 21 rods,
... cookware and 13
... and functional li
... Made in India
... cookware range
... copper designs
... and serving. The
... multi-layer cook
... steel inside dur
... for excellent heat
... 100% steel base f
... compatibility, an
... a beautiful design
... also delivers des
... make cooking ea
... dry-free non-st
... markings, steel
... steel handles, the
... longer feet have
... optimum heat in
... SCANPAN like
... seen in design?
... whenever with



Office & Sample Room





Factory Show

01

Factory



Surface Treatment

10+ production lines



□ Spraying



□ Engraving



□ Electroplating



□ Silk-screen



- Spraying
- Engraving
- Electroplating
- Silk-Screen

