

SGHY16030301CCL SGHY16030301CCL SGHY16030301CCL SGHY16030301CCL SGHY16030301CCL



Product Details

SGHY16030301CCL

SGHY16030301CCL	SGHY16030301CCL SGHY16030301CCL SGHY16030301CCL SGHY16030301CCL SGHY16030301CCL
SGHY16030301CCL	SGHY16030301CCL
SGHY16030301CCL	SGHY16030301CCL SGHY16030301CCL SGHY16030301CCL : 105mm SGHY16030301CCL : 105mm SGHY16030301CCL : 100mm SGHY16030301CCL : SGHY16030301CCL SGHY16030301CCL : SGHY16030301CCL SGHY16030301CCL : SGHY16030301CCL 5 ~ 7
SGHY16030301CCL	SGHY16030301CCL : 5 / 8 / 10 / 16 SGHY16030301CCL SGHY16030301CCL.
SGHY16030301CCL	10oz 14oz 16oz SGHY16030301CCL. SGHY16030301CCL
SGHY16030301CCL	SGHY16030301CCL SGHY16030301CCL SGHY16030301CCL 1.5 SGHY16030301CCL SGHY16030301CCL SGHY16030301CCL 2.15
SGHY16030301CCL	24pcs / 36pcs / 48pcs SGHY16030301CCL etc SGHY16030301CCL SGHY16030301CCL SGHY16030301CCL
MOQ	5000pcs
SGHY16030301CCL	SGHY16030301CCL 35 SGHY16030301CCL
SGHY16030301CCL	SGHY16030301CCL T / T SGHY16030301CCL 30 % SGHY16030301CCL, B / L SGHY16030301CCL SGHY16030301CCL SGHY16030301CCL
SGHY16030301CCL	1. SGHY16030301CCL SGHY16030301CCL 2. FDA, SGS, LFGB SGHY16030301CCL 3. SGHY16030301CCL 4. SGHY16030301CCL SGHY16030301CCL, SGHY16030301CCL, SGHY16030301CCL SGHY16030301CCL SGHY16030301CCL. 5. SGHY16030301CCL SGHY16030301CCL



More Product Pictures

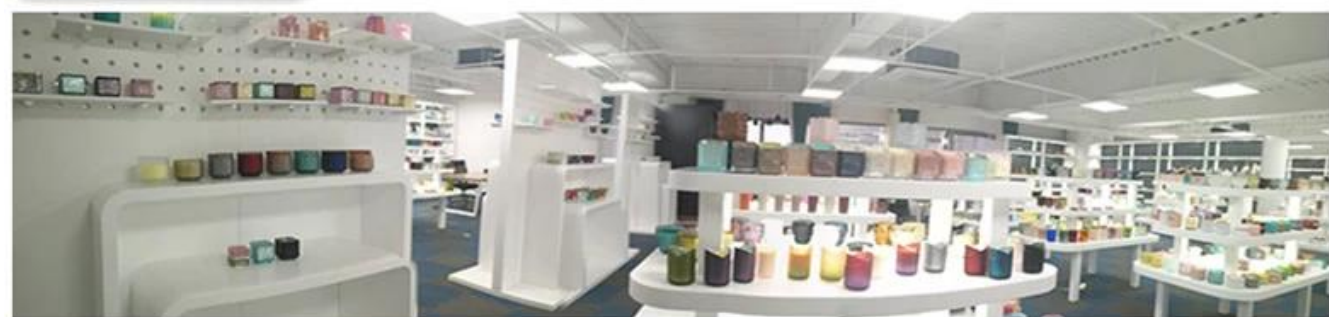






Office & Sample Room





Factory Show

01

Factory



Surface Treatment

10+ production lines



□ Spraying



□ Engraving



□ Electroplating



□ Silk-screen



- Spraying
- Engraving
- Electroplating
- Silk-Screen



□ □ □ □ □ □ □ □

1. □□□ □□, □□, □□ □□, □□ □□ □□.
2. □□ □□□ □□□ □□, □□ □ □□□ □□ □□□ □ □□□.
3. □□□ □□□ □□ □□ □□ □□□□ □□□□.

□□ □□

1. □□□□□□□ □□
2. □□□□ □□ □□□ □ □□ □□□ □□ □□□□□.
3. □□ □□ □□□□□ □□□ □□ □□□□ □□□□□ □□□□□.

□□

1. □□, □□□□, □□□□, □□ □□ □□□ □□ □□ □□□□.
2. □□□ □□ □ □□ □□□ □□ □□ □□ □□□□□.
3. □□, □□ □ □□ □□□ □□□□□
4. □□ □□□□□ □□□ □ □□□□.
5. □□□ □□□□ □□ □□ □□ □□ □□ □□□□.

□□ □□ □□ □□,
 □□ □ □□□□ □□□□□□□ : <http://www.okcandle.com/>
 □□ □□□□ □□□□ □ □ □□ □ □□□ □ □ □□□□. □□□□ □□
 □□□□ □□□ □□□□ □□□□□.

□□□□ □□□