

Zonnig Glaswerk produceert niet alleen OEM/ODM bestellingen, maar helpt ook veel merken om vanuit het productconcept te starten.



**waarom kiezen voor zonneshijn?**

---



**Groot voordeel:**

**Focus op luxe design**

**Ongeveer 80% van de leveranciers van Amerikaanse parfummerken**

**. AQL plus 6 strikte, strenge QC-testnormen**

**. Behoud kwaliteit en monster- en bulkproducten**

Artikelnr.: SG228189

Dia:  $81 \pm 1$  mm

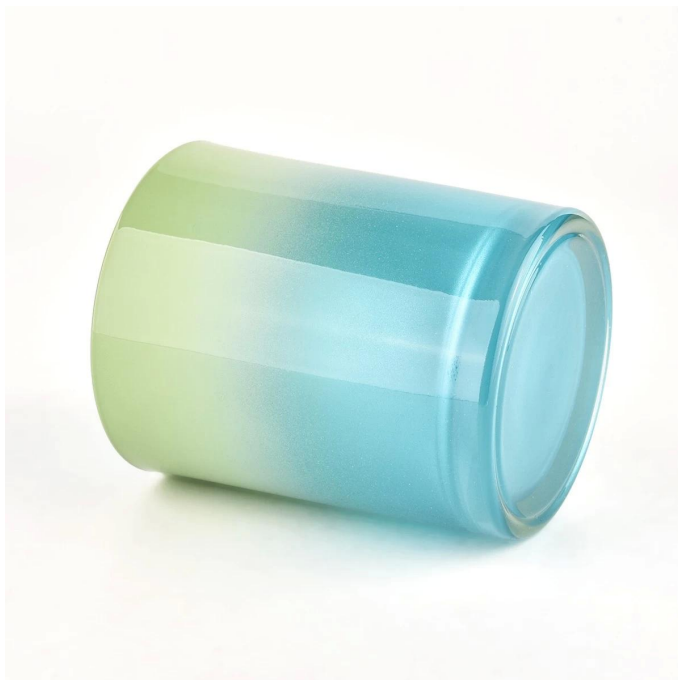
Hoogte:  $98 \pm 1$  mm

Bodemdia:  $76 \pm 1$  mm Gewicht:  $406 \pm 20$  g

Capaciteit:  $300 \pm 10$  ml;

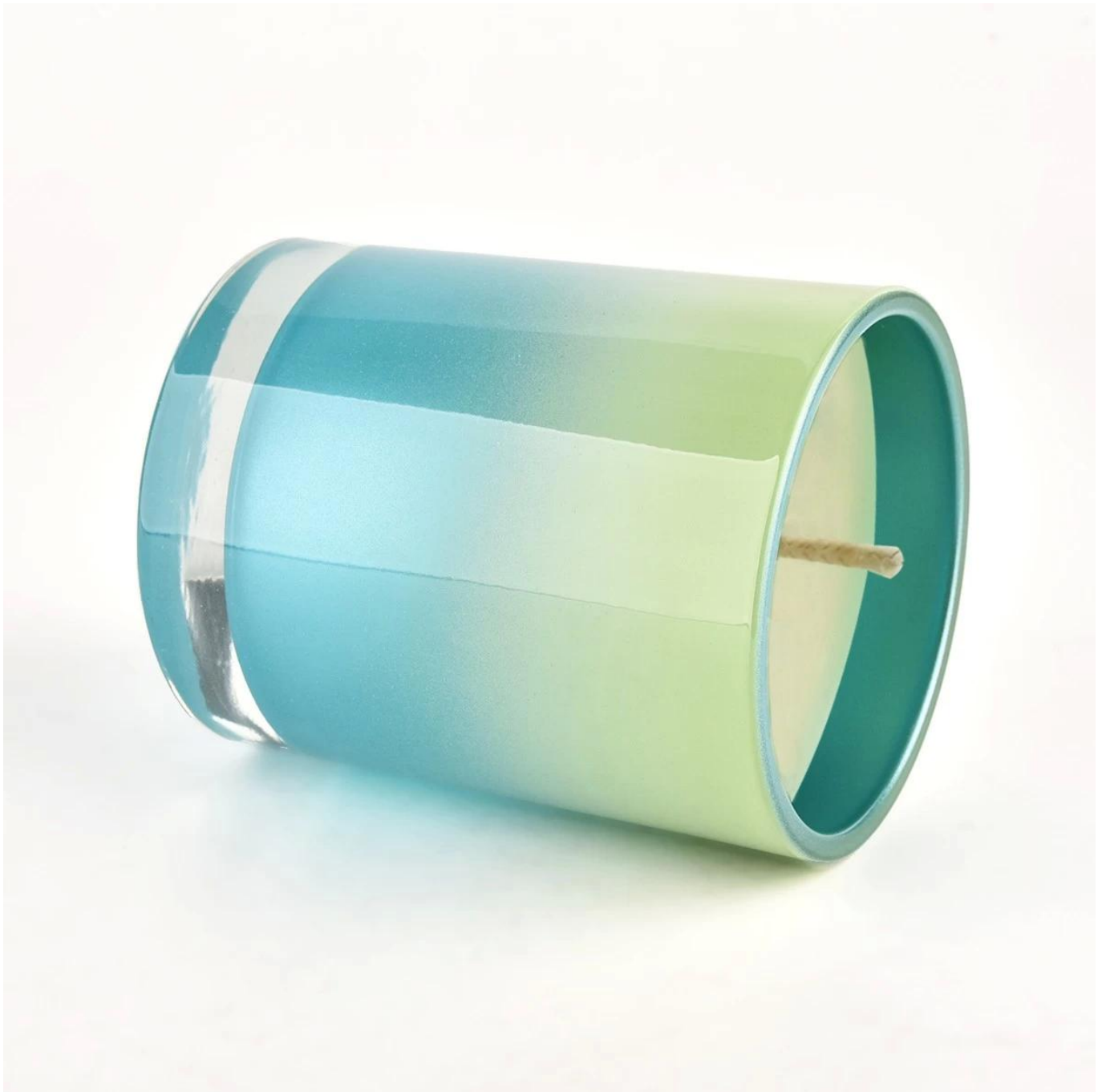
MOQ: 3.000 stuks

Wij vertalen uw ideeën in creatief kruidenproducten, verkopen wij zelf op de lokale markt.









Sollicitatie:

Decoratief diner in de bar of bar

- . Geschikt voor gezinnen, hotels of tuinen
- . Speciaal minnaar cadeau
- . Enige kans op decoratie



# Application



Festival Gifts



Home Decoration



Wedding Gifts



Christmas Gifts

Ons verhaal

---

## Company Profile



**Sunny Glassware** was established by Frank and Alice for more than 25 years, which provide a leading excellent combination between prices, quality & responsiveness in glassware industry.

Sunny keep engaged in glassware designing and manufacturing, there are more than 10 product lines available from hand blown craft to machine pressed, machine blown and IS machine made etc., and various kinds of deep processing technologies can be customized such as color sprayed, laser printing, decal print, electroplate, frosted, screen printing, sandblasted and ion plating etc. **ISO 9001:2008/2015, Enterprise Intellectual Property** and **Green & Social Compliance Statement** certificates were issued by the third-party certification companies.

There are about 5,000 items which cover all daily-used glassware and ceramic ware, e.g. candle holders, borosilicate glass, bottles, tumblers, jars, stemware, tableware & drinkware, bathroom accessories etc. The products can meet **FDA, LFGB, CA 65, ASTM, dishwasher test**.

With a strictly control system on product quality and customer service, our exporting market have expanded rapidly to North & South America, Europe, Oceania and Asia.

Our business scopes are mainly involved in home decor, gift crafts and tableware. There are **approximately 80% candle holders in USA luxury branded companies** were imported from Sunny Glassware.

## Wat zijn we daar?

De SUNNY GLATWARES keurde de ISO 90012008/2015-certificering van het kwaliteitsmanagementsysteem goed en implementeerde de intellectuele eigendomsnormen van het bedrijf om de belangen van zijn klanten te beschermen.



中国制造之美  
Manufacturing Excellence  
& Innovation Awards



2017-2018  
入围奖  
Selected Award

六角回纹香蜡罐

Hexagon meander scent glass candle jar

美阳玻璃制品有限公司

SUNNY GALAWARE CO., LTD.

主办方  
Made-in-China.com  
中国制造网



贸易推广交流中心

合作机构



必维国际检验集团

SGS

SGS通标标准技术  
服务有限公司



TUV南德意志集团



# PACKAGING & SHIPPING



# FAQ

Q1: Do you accept small order?

Yes, any quantity would be acceptable if we have stocks.

Q2: Do you have any other colors/sizes for this kind of jar?

Any colors can be customized according to pantone number or your sample, the we have some hot sale regular sizes for you to choose, if you want to make new sizes we can also open new molds.

Q3: What kind of lids you can offer?

We can provide lids in different materials like glass, ceramic, metal, wood, concrete and plastic ect.

Q4: Do you have certification for your products?

Yes, for the glassware, have ASTM. CA65 test , FDA etc.

Q5: Do you accept Third party inspection?

Yes,we accept it.It's the normal way for many clients.

Q6: How to ensure the production quality is what I need?

We will do the production and inspect the goods by sample we both approved. If you have more requirement for the product quality,we should discuss the quality standard before we place the order.

Q7: How could I get a sample?

We offer free samples for those we keep in stock, for custom samples we need 7~10 to get samples ready. Sample fee could be pay by Paypal, Alibaba, or bank.

Q8: What's your MOQ of ceramic jars?

The moq of a single order is 3000 pcs, 1000 pcs each color is acceptable

Q9: Why your sample cost is so expensive?

Sample cost is mainly for labor cost, it is not equal to unit price.

Q10: Could you arrange shipment for us together?

Yes, we can. We have a professional logistics department which help many of our customers handle shippments, if you need we arrange shipping, please tell us your company or warehouse address and we can quote DDU price to you check together

