

20oz ceramic candle jar with embossed ridge pattern



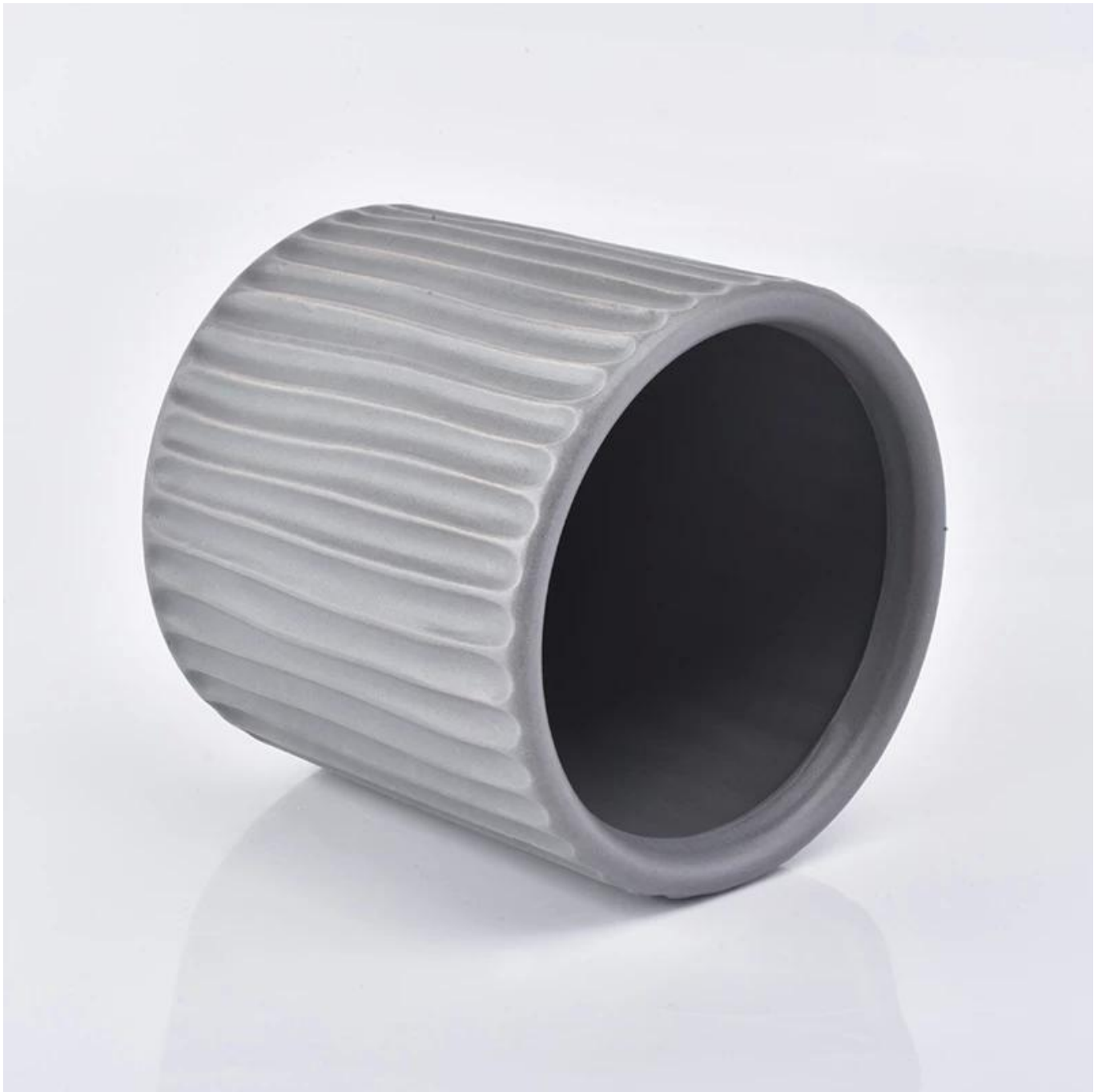
Product Details

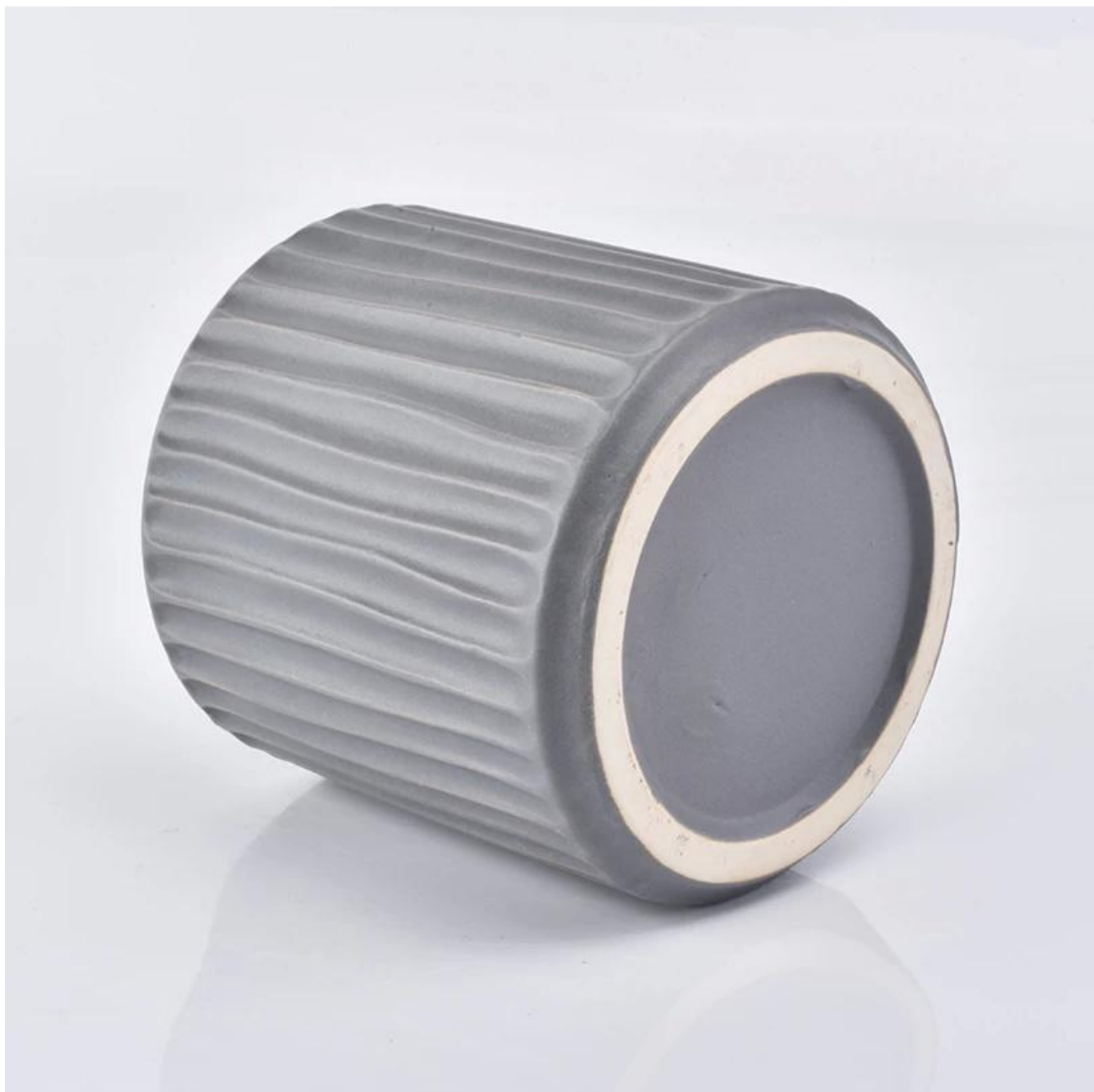
Product name	20oz ceramic candle jar with embossed ridge pattern
Item number.	SGYC19012240
Size	Top dia: 100mm Bottom dia: 100mm Height:100mm Weight: 350g Capacity: 580ml
Capacity	580ml
Sampling time	1.5 days if the shape and size of the products exist 2.15 days if you need new shape and size of the products
Packaging	24pcs / 36pcs / 48pcs regular safety packing with egg divider
MOQ	3000pcs
Delivery time	Within 35 days after the order confirmed
Payment terms	30% deposit by T / T in advance, the balance after showing the copy of B / L
Product features	<ol style="list-style-type: none">1. High quality and competitive prices2. Testing FDA, SGS, LFGB etc.3. Eco Friendly4. It is widely aimed at Wedding, party, home, bars etc.



More Product Pictures













hand”

Every SCANPAN aluminum product is cast by hand and goes through eight sets of hands. The minutely-controlled process begins with recycled aluminum, from scrap or cans, which is melted down.

Tradition Innovation

...and globally for its premium products and res...
...when it comes to our side products. Danish...
...comes to 80th anniversary in 2016

Sustainable materials
Customers are also guaranteed an environmentally-friendly

handle and, after a final quality check, the product is packed in recycled materials and prepared for sale.
Polishing with Danish beeswax continues to be an important part of the finishing process for SCANPAN's pressure-cast frying pans.

Introducing Maire D

SCANPAN's Maire D series includes a multi-cook range, a copper and stainless steel range, and a stainless steel range. The Maire D multi-cook range is made from recycled aluminum and is designed to be durable and long-lasting. The Maire D copper range is made from copper and stainless steel and is designed to be durable and long-lasting. The Maire D stainless steel range is made from stainless steel and is designed to be durable and long-lasting.







[Homepage back](#)