

**400ml Custom color painted concrete candle holder  
wholesale**



Products Details

Name	400ml Custom color painted concrete candle holder wholesale
------	---

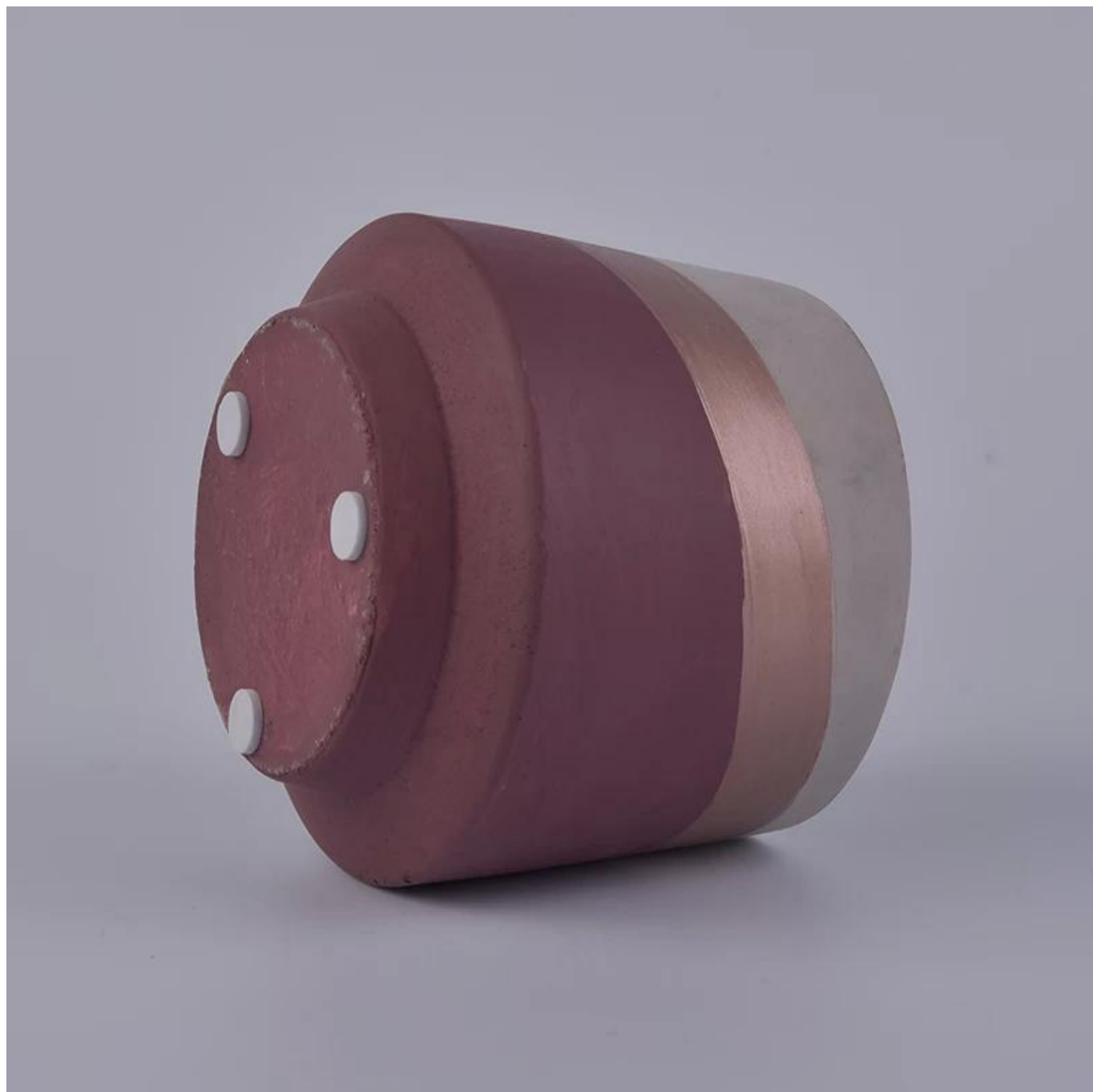
Item Details	<p>Item No.:SGYC18012501</p> <p>Top dia: 90.5mm</p> <p>Bottom dia: 73.5mm</p> <p>Max dia: 106</p> <p>Height: 88.6mm</p> <p>Weight: 410g</p> <p>Capacity: 400ml</p>
Material	Concrete
Accessories	cap, ceramic/metal/wood lid, wax, wick, shear, etc
Finish	decal, color coating, mercury, laser, frosted, plating, glazed etc.
Packing	<ol style="list-style-type: none"> <li>1. 24/36/48/72 pcs per standard export packing carton</li> <li>2. Color/white/brown box packing</li> <li>3. Luxury gift box packing</li> <li>4. Shrinking packing</li> <li>5. Individual/set box packing</li> <li>6. Customized packing</li> </ol>
Our strength	<ol style="list-style-type: none"> <li>1. We are the professional <a href="#">candle holder</a> manufacturer, major in different kinds of <a href="#">candle holders</a>, ranging from <a href="#">glass candle holder</a>, <a href="#">ceramic candle holder</a>, <a href="#">marble candle holder</a>, <a href="#">Concrete candle holder</a>, <a href="#">Tin candle holder</a>, <a href="#">Stainless candle jar</a> etc.</li> <li>2. Perfect for home/store/super market/restaurant/hotel/bar/KTV etc.</li> <li>3. With professional designer team, which can help design and open new mould based on your requirement.</li> <li>4. Post processing: color coating, plating, mercury, iridescent, engraving, printing, decal, spray color, frosty, gold plating, hand-drawing etc.</li> <li>5. Small MOQ is acceptable. We have regular products for supporting you.</li> </ol>
Our service	<ul style="list-style-type: none"> <li>* Reply you within 24 hours</li> <li>* Ranges of products for your selections</li> <li>* Completely production system</li> <li>* Skilled factory workers</li> <li>* Both machine line and handmade line for your service</li> <li>* Experienced QC team inspect the products comprehensively and strictly according to AQL standard</li> <li>* Creative designer innovate newly products over 15 styles monthly</li> <li>* Professional Logistic department supply to door service</li> </ul>
MOQ	1000pcs



More Product Pictures











Red  
S16030-127 12.5×12.5×12.0cm  
S16030-102 10.0×10.0×10.0cm



Black



Deep Blue



S16017-130 13.5×13.5×13.0cm  
A



B



C



D



E



F





CS10024A-1 14x14x26cm  
CS10024B-1 11x11x20cm



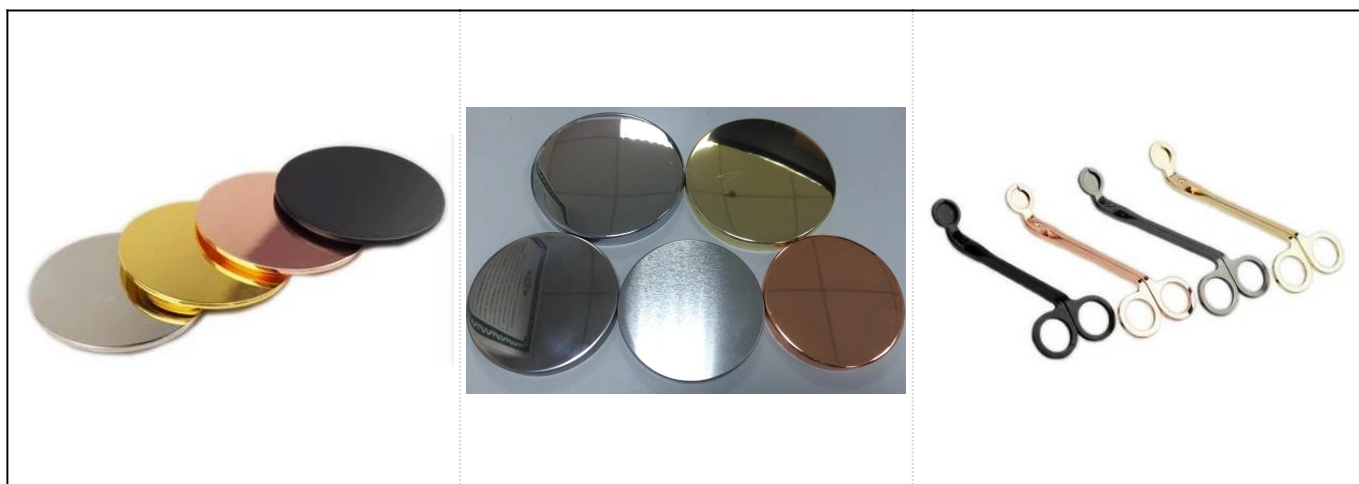
CS10025A-4 20.5x20.5x19.5cm  
CS10025B-4 17.5x17.5x16.5cm  
CS10025C-4 14.5x14.5x14cm  
CS10025D-4 11.5x11.5x10.5cm  
CS10025E-4 8x8x7cm



CS10026A-2 20x20x12.5cm  
CS10026B-2 17x17x10cm  
CS10026C-2 14x14x9cm



Matched accessories:







## Office & Sample Room

Sunny Glassware is a leading candle holders supplier in China since 1992, our glass/ceramic/concrete candle jars etc. and matched accessories

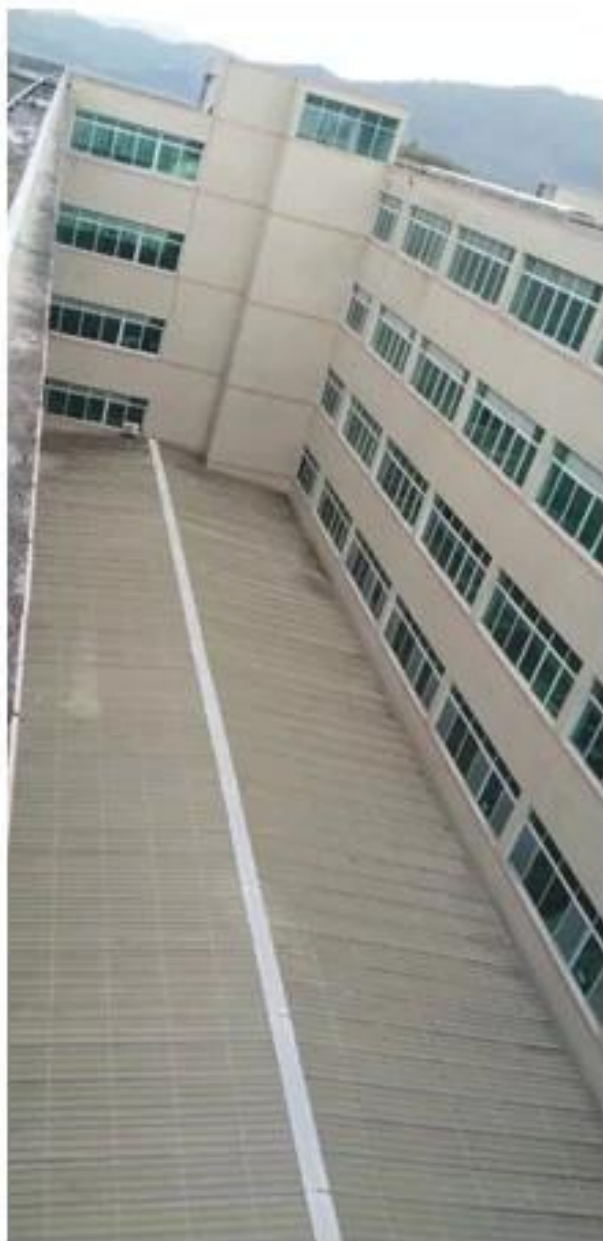
mainly export to USA, EU, AU over more than 24 years experience. We're strictly with the quality, our QC team inspect the products

from raw material to production then to packing step by step, the inspection strictly according to the AQL standard.

### Our service as following:

- > Different shapes and sizes available, also welcome your own design.
- > Accessories: cap, glass/metal/wood lid, wax etc.
- > Decoration: decal, color coating, mercury, laser, frosted, plating etc.
- > Packing: normal safety packing, color/white/gift box packing, customized packing available.
- > Design power: more than 15 innovations monthly.
- > QC team: over 10 professional staffs inspect the production strictly and comprehensively, which meet AQL standard.
- > Sample: within 7 days
- > Certification: ASTM, 100% lead& cadmium free.

### Our Facotry:



Production:



Our Team:





—To be your **Reliable**  
Supplier



Our Showroom:

## Sample Room



4,000+ Items for Choice



Certificate:



# ASTM







Contact me:

For more [concrete candle holder](#) or any glassware,  
please visit our website: <http://www.okcandle.com/>  
Or, can help you learn more about us: [FAQ](#)