

## antique ceramic candle holders for wedding decor

### Product Details

|                  |   |
|------------------|---|
| product name     | antique ceramic candle holders for wedding decor  |
| Item             | SGJW190129013   |
| Size             | Top dia: 100mm<br>Bottom dia: 100mm<br>Height:90mm<br>Weight: 405g<br>Capacity: 630ml   |
| Capacity         | 10oz 14oz 16oz candle holders etc. It's available   |
| Sampling time    | 1.5 days if the shape and size of the products exist<br>2.15 days if you need new shape and size of the products  |
| Packaging        | 24pcs / 36pcs / 48pcs regular safety packing and so on For export carton with egg divider   |
| MOQ              | 3000pcs   |
| Delivery time    | Within 55 days after the order confirmed  |
| Payment terms    | 30% deposit by T / T in advance, the balance after showing the copy of B / L  |
| Product features | 1. High quality and competitive prices<br>2. Testing ASTM<br>3. Eco Friendly<br>4. It is widely aimed at Wedding, party, home, bars etc.<br>5. ceramic candle containes with transmutation decoration way |

### More Product Pictures





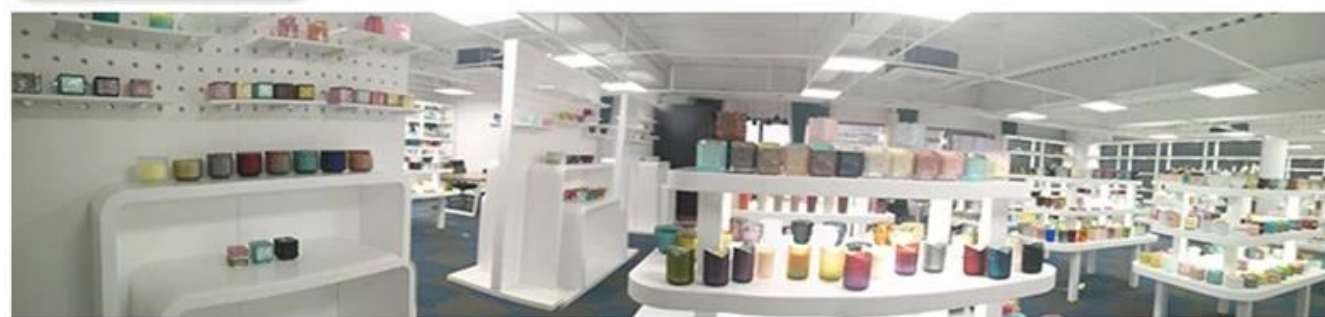






Office & Sample Room





Factory Show



## \* Production Process







Decoration firing



After decal



Inspection the decal product



Packing



Ready to loading

## Who We Are

- More than 25 years experience glassware and ceramic ware supplier in China
- Innovative design capacity
- ISO9001 certificate approval
- Candle Holders, Bottles, Drinkware focus



Shenzhen Sunny Glassware Co.,Ltd

SUNNY GROUP



Modest

Passion

Collaborative

