

Black glass candle holder with lid

Sunny Glassware can not only perform OEM/ODM orders, but also help many brands from concept design to product production.



[The characteristics of this candle jar](#)

1. Fashion and hot shape
2. Popular colors
3. Environmental protection & & recycling



[Why choose Sunny Candle holder](#)



Unique market advantage

- . Focus on luxury design
- . Perfume brand supplier in the United States 80%
- . AQL plus 6 strict and sunny QC test standards
- . Maintain quality consistent with sample and quality

product

Ceremony design awareness

- . Won the "Made in China" award
- . Received a very admirable NEST fragrance
- . Friend or business relationship gift
- . Relaxation and romantic life



Flexible size design allows your market to grow rapidly



body:

- . diameter:103 mm
- . **Small diameter: 103**Millimeter
- . **height:** 103 mm
- . **capacity:** 535 ml
- . **weight:** 635 grams

cover:

- . Top diameter: 103 mm
- . Height: 47 mm
- . Weight: 160g

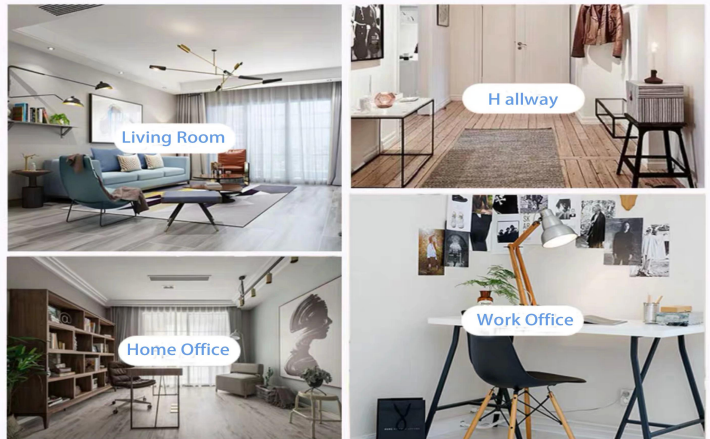
Custom designs and different sizes available

With our strong support, our customers are growing rapidly, from small labs to industry leaders.

Life scene

- . Coffee or bar
- . Perfect for families, hotels or gardens
- . Sweet lover's gift
- . Every renovation

Range of the application



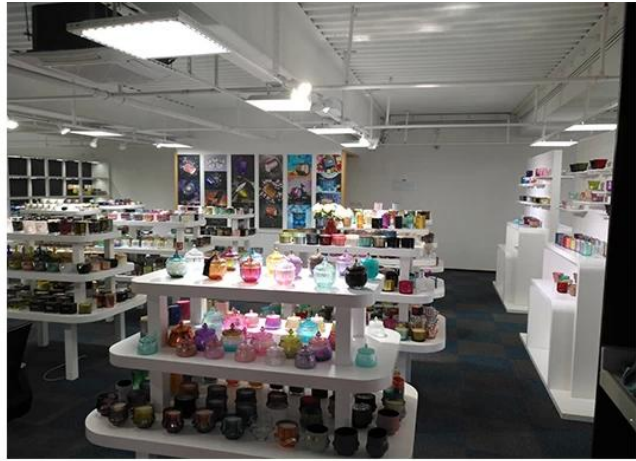
Office & Sample Room

We purchased an international office of 1,800 square meters in Shenzhen.



Sample room display

Sunny Glassware provides more than just **Shenzhen sample room has 5000 pieces** A wide range of options. He won a big card [Customer Reviews](#). Welcome to the Shenzhen office! The image is as follows **Just part of our design candlestick** Welcome to the Shenzhen office to find your favorite, it will bring you a lot of surprises, because it is difficult to find such another supplier in China.



Our certificate



ASTM



ISO9001-2015



Green and social
responsibility
Policy's statement

Factory Show

Below are pictures of major online transactions. For more factory information, please see: [Factory tour](#)

01 Factory





Surface Treatment

10+ production lines



□ Spraying



□ Engraving



□ Electroplating



□ Silk-screen



- Spraying
- Engraving
- Electroplating
- Silk-Screen

Other videos

The characteristics of the machine pressed glass candlestick

Open Machine Machine-Pressed Craft is usually used to make candlesticks with the following features: the upper diameter is lower than the bottom

- . Mass production with high MOQ
- . Embossed pattern on the outer wall
- . Maximum - Minimum thickness: 1.5~10mm
- . Thinner thickness: 4~30mm
- . Low cost model cost on the exterior wall.

Application method

1. Use it under the guidance of an adult
2. Rinse with water or boiling water before use
3. Do not touch the edge of the glass, try removing the bottom of the glass or the handle

Precautions

- Beer, wine, white wine, drinks or hot water may not be too full
- 2. To avoid hurting your child's hands, keep them out of reach.
- 3. Avoid falling, collision and strong impact
- 4. Not applicable to microwave ovens
- 5. To prevent it from rupturing, do not place it directly on fire.

More [candle holder](#) Or any glass,

Please visit our website: [Http://www.okcandle.com/](http://www.okcandle.com/)

Or here can help you better understand us: [FAQ](#)