

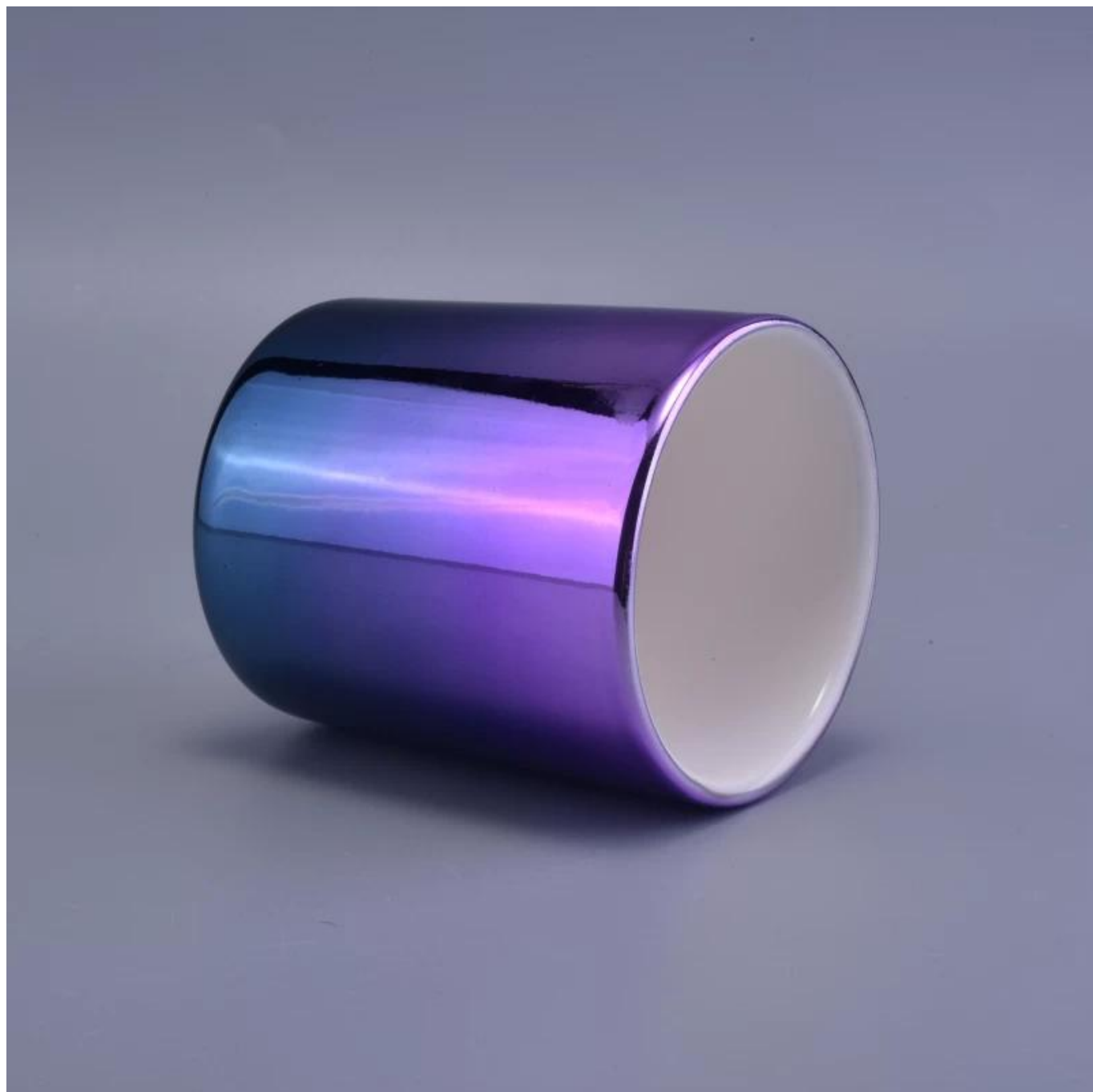
## blue and purple gradient cylinder ceramic vessel for candles

### Product Details

Item name	blue and purple gradient cylinder ceramic vessel for candles
Item No.	SGSN17010510
Size	Top dia: 88mm Bottom dia: 82mm Height: 103mm Weight: 325g
Capacity	Capacity: 396ml
Sample time	5 days if at exist shape and size of products 15 days if need new shape and size of products
Packing	Normal safety packing 24pcs/36pcs/48pcs etc. per export carton with egg divider
MOQ	3000pcs
Delivery time	Within 35 days after order confirmed
Payment terms	30% deposit by T/T in advance, the balance paid after showing the copy of B/L
Product feature	1.High quality and competitive prices 2.Meet SGS,LFGB etc. test 3.Eco-friendly 4.Widely apply to fragrance testing etc.

### More Product Pictures









Order Guide



**Sunny Glassware** is a leading candle holders supplier in China since 1992, our glass/ceramic/concrete candle jars etc. and matched accessories mainly export to USA, EU, AU with over more than 24 years experience. We're strictly control the quality, our QC team inspect the

products from raw material to production then to packing step by step, the inspection strictly according to the AQL standard. We are looking forward your inquiry and cooperation.