

Ceramic candle jar blue and white color with unique pattern

Product Details

Product name	Ceramic candle jar blue and white color with unique pattern
Item number.	SGMK19030110
Size	Top dia: 73mm Bottom dia: 85mm Height: 98mm Weight: 211g
Capacity	328ml
Sampling time	1.5 days if the shape and size of the products exist 2.15 days if you need new shape and size of the products
Packaging	24pcs / 36pcs / 48pcs regular safety packing with egg divider
MOQ	3000pcs
Delivery time	Within 35 days after the order confirmed
Payment terms	30% deposit by T / T in advance, the balance after showing the copy of B / L
Product features	1. High quality and competitive prices 2. Testing FDA, SGS, LFGB etc. 3. Eco Friendly 4. It is widely aimed at Wedding, party, home, bars etc.

More Product Pictures



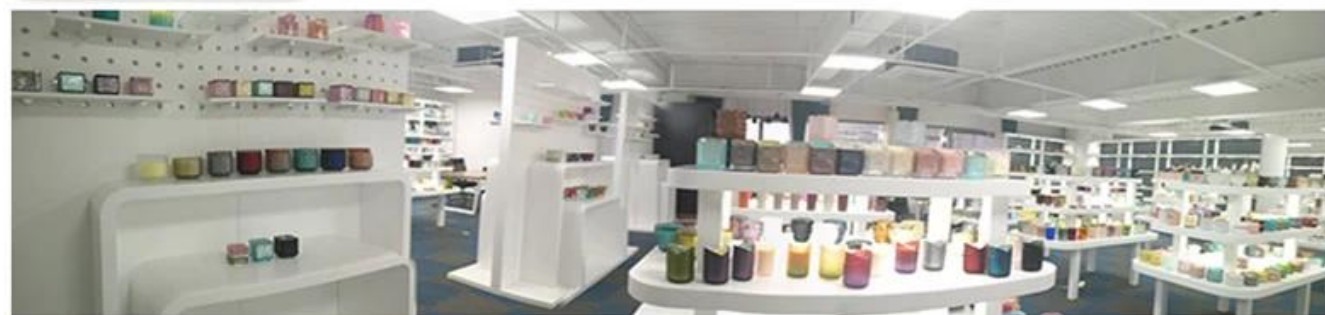






Office & Sample Room







[Homepage back](#)