

Cylinder ceramic candle holder with hand painted decoration vase jar

Product Details

| | |
|-----------------|--|
| Item name | |
| Item No. | SGMK18070505 |
| Size | Top dia: 64.1mm Bottom dia: 67mm Height: 105mm Max dia□74.6mm Weight: 279g Capacity: 280ml |
| Capacity | 10oz 14oz 16oz etc is available |
| Sample time | 1.5 days if at exist shape and size of products 2.15 days if need new shape and size of products |
| Packing | Normal safety packing 24pcs/36pcs/48pcs etc. per export carton with egg divider |
| MOQ | 3000pcs |
| Delivery time | Within 35 days after order confirmed |
| Payment terms | 30% deposit by T/T in advance, the balance after showing the copy of B/L |
| Product feature | 1.High quality and competitve prices 2.Meet FDA, SGS,LFGB etc. test 3.Eco-friendly 4.Widely apply to Wedding, party, home, bar etc. 5.Machine made |

More Product Pictures



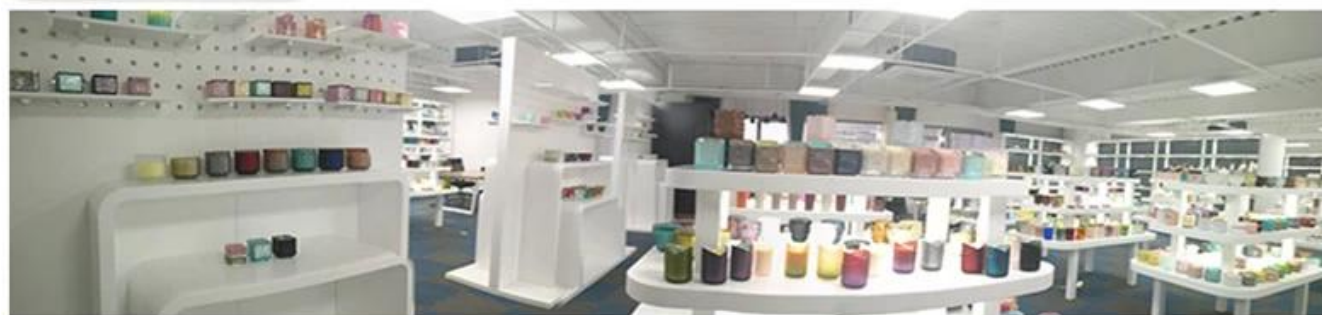






Office & Sample Room





Cautions

1. Beer, red wine, white wine, beverage or hot water not be too full
2. To avoid to hurt your children's hand, please put it in the place where they can't reach
3. Avoid dropping ,Collision and strong impact
4. Not available for microwave oven
5. To prevent it from cracking, do not put it over open fire directly

For more [candle holder](http://www.candleholdermanufacturer.com/) or any glassware,
please visit our website:<http://www.candleholdermanufacturer.com/>

Or here may help you know more about us: [FAQ](#)

[We are looking forward your inquiry and cooperation.](#)

[Homepage back](#)