

golden pattern ceramic candle jar



Product Details

Item No.	SGYC17060609
Sizes	Top dia: 95mm Max Dia: 112mm Height: 89mm Weight: 650g Capacity: 330ml
Material	Ceramic candle container
Accessories	cap, ceramic/metal/wood lid, wax, wick, shear etc
Finish	decal, color coating, mercury, laser, frosted, plating, glazed etc.
Packing	1. 24/36/48/72 pcs per standard export packing carton 2. Color/white/brown box packing 3. Luxury gift box packing 4. Shrinking packing 5. Individual/set box packing 6. Customized packing
Our strength	1. We are the professional candle holder manufacturer, major in different kinds of candle holders, ranging from glass candle holder , ceramic candle holder , marble candle holder , Concrete candle holder , Tin candle holder , Stainless candle jar etc. 2. Perfect for home/store/super market/restaurant/hotel/bar/KTV etc. 3. With professional designer team, which can help design and open new mould based on your requirement. 4. Post processing: color coating, plating, mercury, iridescent, engraving, printing, decal, spray color, frosty, gold plating, hand-drawing etc. 5. Small MOQ is acceptable. We have regular products for supporting you.

Our service	<ul style="list-style-type: none">* Reply you within 24 hours* Ranges of products for your selections* Completely production system* Skilled factory workers* Both machine line and handmade line for your service* Experienced QC team inspect the products comprehensively and strictly according to AQL standard* Creative designer innovate newly products over 15 styles monthly* Professional Logistic department supply to door service
MOQ	5000pcs



More Product Pictures











Office & Sample Room

Sunny Glassware is a leading candle holders supplier in China since 1992, our glass/ceramic/concrete candle jars etc. and matched accessories mainly export to USA, EU, AU over more than 24 years experience. We're strictly with the quality, our QC team inspect the products from raw material to production then to packing step by step, the inspection strictly according to the AQL standard.

Our service as following:

- > Different shapes and sizes available, also welcome your own design.
- > Accessories: cap, glass/metal/wood lid, wax etc.

- > Decoration: decal, color coating, mercury, laser, frosted, plating etc.
- > Packing: normal safety packing, color/white/gift box packing, customized packing available.
- > Design power: more than 15 innovations monthly.
- > QC team: over 10 professional staffs inspect the production strictly and comprehensively, which meet AQL standard.
- > Sample: within 7 days
- > Certification: ASTM, 100% lead& cadmium free.

Our Facotry:



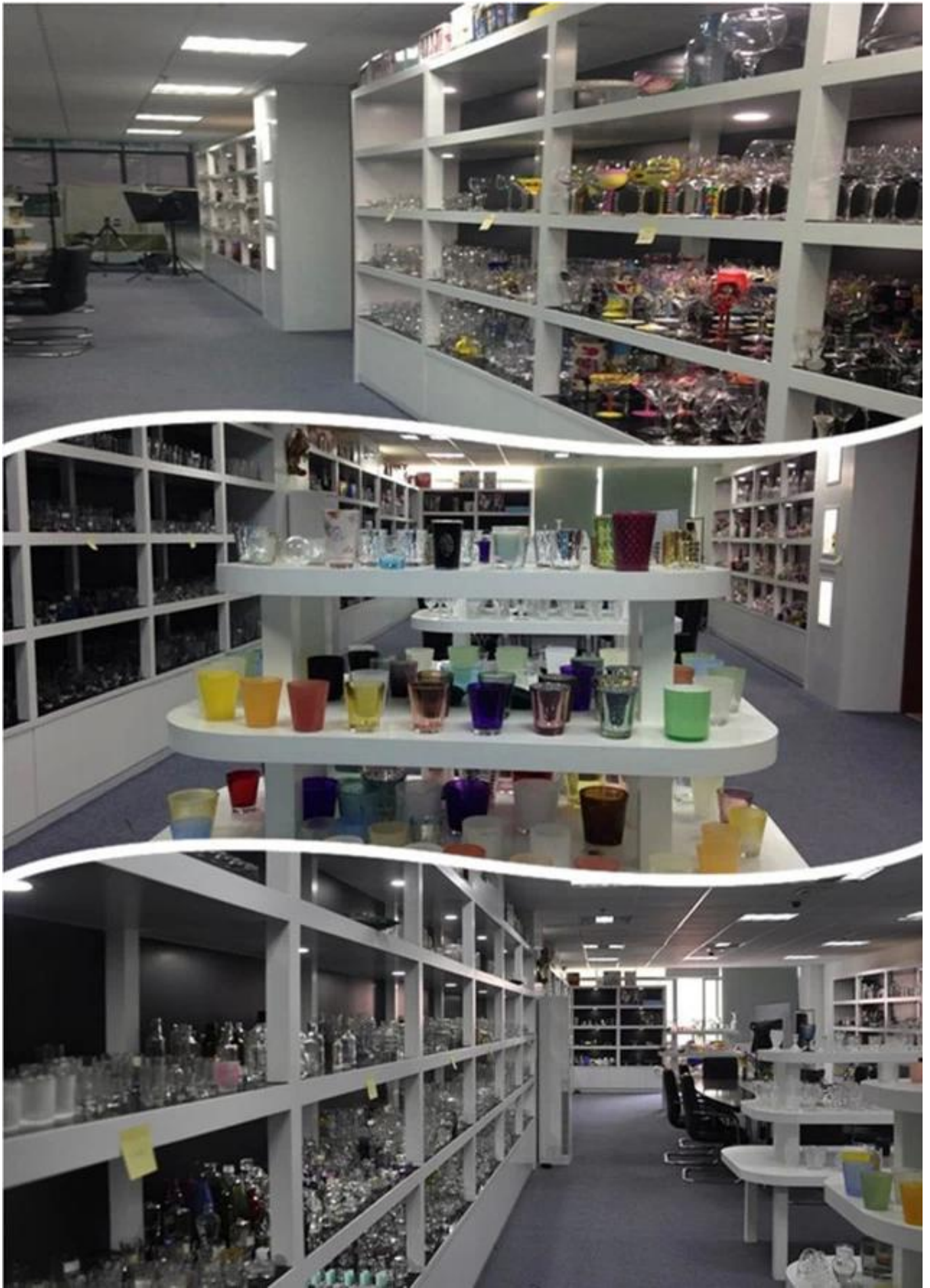
Production:



Our Team:



Our Showroom:



Certificate:



ASTM

Testing Report

Customer: **Shanghai Sunny Glass Co., Ltd.**
Product: **Decorative Glass**
Order No.: **20230101001**

Tested by: **Shanghai Sunny Glass Co., Ltd.**
Test Date: **2023-01-01**
Test Location: **Shanghai Sunny Glass Co., Ltd.**

Test Results:

Item	Result
Visual Inspection	Pass
Dimensional Inspection	Pass
Chemical Analysis	Pass
Mechanical Properties	Pass
Thermal Properties	Pass
Electrical Properties	Pass

Signature: **Shanghai Sunny Glass Co., Ltd.**
Date: **2023-01-01**

SGS

Test Report

Reference: **SGS-2023-01-01**

Test Results:

Item	Result
Visual Inspection	Pass
Dimensional Inspection	Pass
Chemical Analysis	Pass
Mechanical Properties	Pass
Thermal Properties	Pass
Electrical Properties	Pass

Signature: **SGS**
Date: **2023-01-01**

SGS

Test Report

Reference: **SGS-2023-01-01**

Test Results:

Item	Result
Visual Inspection	Pass
Dimensional Inspection	Pass
Chemical Analysis	Pass
Mechanical Properties	Pass
Thermal Properties	Pass
Electrical Properties	Pass

Signature: **SGS**
Date: **2023-01-01**

Contact me:

For more [ceramic candle holder](#) or any glassware,
please visit our website: <http://www.candleholdermanufacturer.com/>
Or, can help you learn more about us: [FAQ](#)