

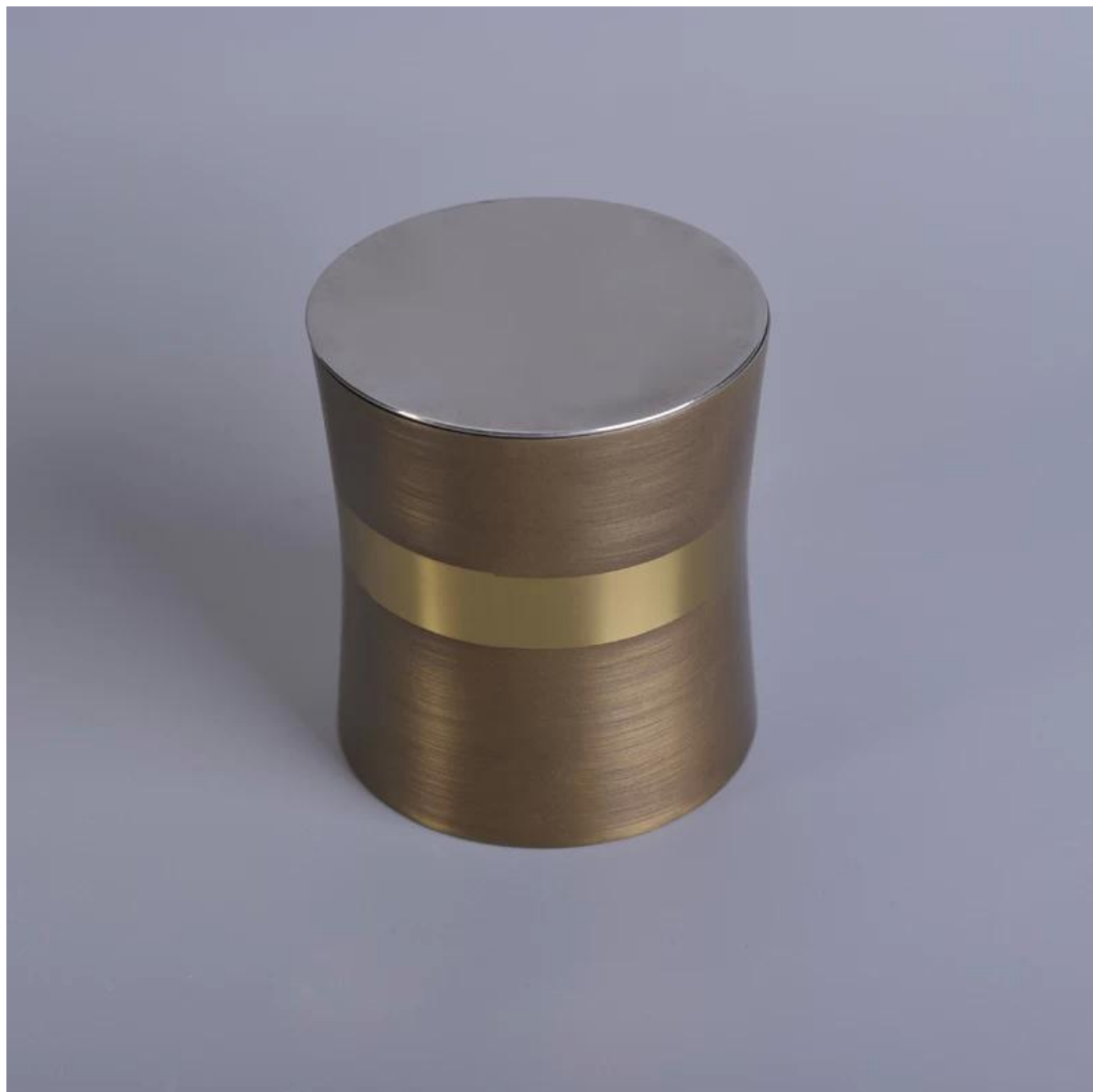
# High quality copper plating scented wax stainless steel candle jars

## Product Details

Item Name	<a href="#">High quality copper plating scented wax stainless steel candle jars</a>
Item No.	SGYB17031306
Size	Top dia: 81mm Bottom dia: 83mm Height: 90mm Weight: 159g Capacity: 383ml Lids Dia: 82mm Height: 7mm Weight: 75g
Brand name	Sunny Glassware
Sample time	1.5 days to exist in the shape and size of the products 2:15 days if you need new shape and size of products
Packing	Security packaging normal 24pcs / 36pcs / 48pcs per carton etc. export with egg divider
Moq	5,000pcs
Delivery time	Within 35 days after order confirmed
Payment terms	30% deposit by T / T in advance, the balance after showing the copy of B / L
Product Feature	1.High quality and competitive prices 2.Meet FDA, SGS, LFGB test etc. 3.Eco-friendly 4.Widely applies to wedding, party, house, bar etc. 5.Machine made

## More Product Pictures









Office & Sample Room





Factory Show



### The features of month blown glass

1. Its advantage including abundance sculpt, technics, surface effects, color etc.
2. The quality is difficult control and the tolerance of the size, weight and shape are bigger.
3. The price is high and the product is limited for the special technic glass.

### Method of application

1. Using it under guide of the adult
2. Washing it with clean or boiling water before usage
3. No touching the rim of glass cup, try to take the bottom or the handle of it

### Cautions

1. Beer, red wine, white wine, beverage or hot water not be too full
2. To avoid to hurt your children's hand, please put it in the place where they can't reach
3. Avoid dropping ,Collision and strong impact
4. Not available for microwave oven
5. To prevent it from cracking, do not put it over open fire directly

For more [candle holder](#) or any glassware,  
please visit our website: <http://www.okcandle.com/>

Or here may help you know more about us: [FAQ](#)

[We are looking forward your inquiry and cooperation.](#)

[Homepage back](#)