

luxury round ceramic candle holder



Achieve Customers' Ideas

get your ideas becoming creative fragrance products and sell them very well

Award-winning Design Team

won the trust of many upscale brands

QC Extra Six Steps

No major quality complaints for 9 years



Sunny Glassware is the leading manufacturer of candle holders in China.

Sunny Glassware not only carries out OEM / ODM orders, but also helps many brands start the product concept.

Contact us: sales21@sunnyglassware.com for more details

Product Details

product name	luxury round ceramic candle holder
Article	SGMK19082609
Cut it	Upper diameter: 106mm Lower diameter: 53 mm Height: 86 mm Weight: 309 g Capacity: 449 ml
Capacity	candle holders of different sizes etc. It's available
Sampling time	1.5 days if the shape and size of the products exist 2.15 days if you need a new shape and size of products
package	Regular safety packing 24pcs / 36pcs / 48pcs and so on for export carton with egg divider
MOQ	3000
Delivery time	Within 55 days of order confirmation
Payment terms	30% deposit by T / T in advance, the balance after showing the copy of B / L
Product features	1. High quality and competitive prices 2. ASTM test 3. Eco-friendly 4. It is widely aimed at weddings, parties, home, bars etc. 5. ceramic container with transmutation decoration



More Product Pictures



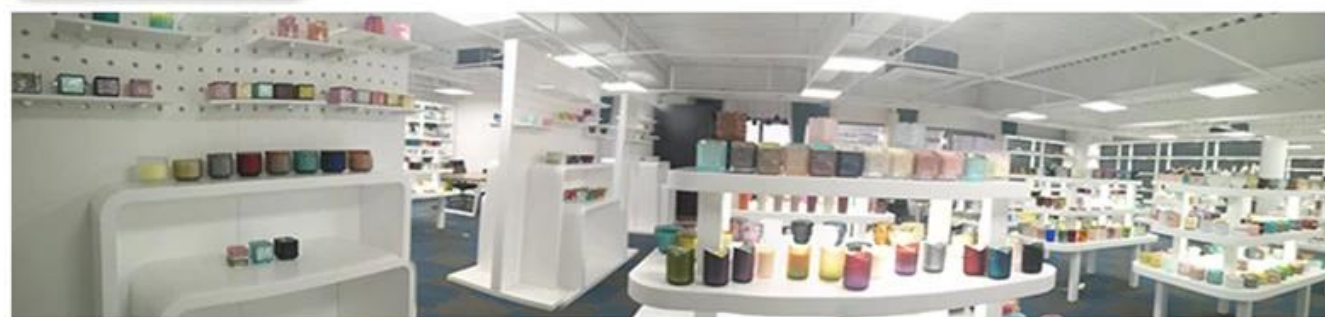






Office & Sample Room





Factory Show

* Production Process



▶ Sculpture



▶ Make Moulds



▶ Inject Clay



▶ Shape forming



▶ Roller Forming



▶ Body Finishing



▶ First Firing



▶ Hand Painting



▶ Decaling



▶ Glazing



▶ Decor Firing



▶ Packing



▶ Warehouse



▶ Loading



▶ Shipping



Decoration firing



After decal



Inspection the decal product



Packing



Ready to loading

Who We Are

- More than 25 years experience glassware and ceramic ware supplier in China
- Innovative design capacity
- ISO9001 certificate approval
- Candle Holders, Bottles, Drinkware focus



Shenzhen Sunny Glassware Co.,Ltd



Modest

Passion

Collaborative