

marble effect glass candle jars from Sunny Glassware



Product Details

Element name	marble effect glass candle jars from Sunny Glassware
Object number.	SGLYP19041201
Cut it	Top dia: 120mm Bottom dia:70mm Height:75mm Weight: 447g Capacity: 560ml Keywords: marble finish glass, glass with cut rim, hand made glass, amber glass marble finish dark gray glass candle holders marble finish dark gray glass candle holders Other sizes: 5 ounces / 8 ounces / 10 ounces / 16 ounces are also available
Capacity	10oz 14oz 16oz etc. It's available
Sampling time	1.5 days if the shape and size of the products exist 2.15 days if you need new shape and size of the products
Packaging	24pcs / 36pcs / 48pcs regular safety packing and so on For export carton with egg divider
MOQ	5000
Delivery time	Within 35 days after the order confirmed
Payment terms	30% deposit by T / T in advance, the balance after showing the copy of B / L
Product features	1. High quality and competitive prices 2. Testing FDA, SGS, LFGB etc. 3.Eco Friendly 4. It is widely aimed at Wedding, party, home, bars etc. 5. Machine made



More Product Pictures





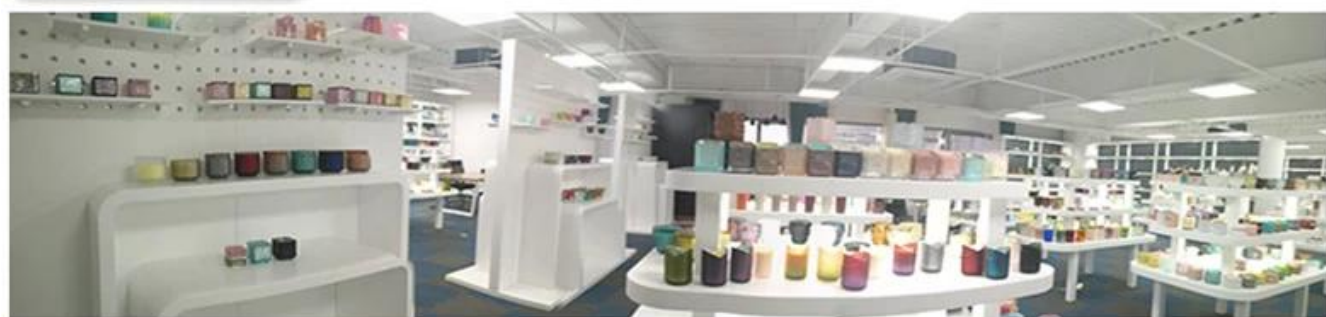






Office & Sample Room





Factory Show



The characteristics of the blown glass a month

1. Its advantage including sculpture of abundance, techniques, surface effects, color etc.
2. Quality is a difficult check and tolerance of size, weight and shape is greater.
3. The price is high and the product is limited for special technical glass.

Application method

1. Using it under the guidance of the adult
2. Wash it with clean or hot water before use
3. Do not touch the edge of the glass cup, try taking the bottom or the handle of it

Precautions

1. Beer, red wine, white wine, drink or hot water should not be too full
2. To avoid hurting your children's hand, please put them where they can not reach
3. Avoid falls, collision and strong impact
4. Not available for microwave oven
5. To prevent it from breaking, do not put it directly on the fire

For more [candle holder](#) or any glass,

Please visit our website:<http://www.okcandle.com/>

Or here it can help you know better than us: [FAQ](#)

[We await your request and cooperation.](#)

[Homepage back](#)

