

Water tranform cement wholesale candle holder

Product Details

Item No.	Item No.: SGSYF17041919 (SY704S224) Top dia: 117mm Bottom dia: 73mm Max dia: 123mm Height: 93mm Weight: 591g Capacity: 515ml MOQ:2000 Sample time: 7 days Mass production time: 30 days after the order confirmed
Material	cement jars
Dcoration & accessories	*decal, color coating, mercury, laser, frosted, plating, glazed etc. *cap, ceramic/metal/wood lid, wax, wick, shear etc
Packing	1. 24/36/48/72 pcs per standard export packing carton 2. Color/white/brown box packing 3. Luxury gift box packing 4. Shrinking packing 5. Individual/set box packing 6. Customized packing
More about ceramics	Different material of ceramic have different tolerance,normally, Ceramics dimensions tolerance: *wall thickness and size: 3mm error *weight :error of 20%
Our service	* Reply you within 24 hours * Ranges of products for your selections * Completely production system * Skilled factory workers * Both machine line and handmade line for your service * Experienced QC team inspect the products comprehensively and strictly according to AQL standard * Creative designer innovate newly products over 15 styles monthly * Professional Logistic department supply to door service



More Product Pictures





Office & Sample Room

Sunny Glassware is a leading candle holders supplier in China since 1992, our glass/ceramic/concrete candle jars etc. and matched accessories.

More about our Sunny Glassware:

1. The glassware passed FDA test(American glass products safety test);

2. Independent logistic department,strict QC staffs,quality control people,sales team for tackle all issues during the product producing,safe and trust;

3. Quick and urgent order: Capability: about 0.5-1 million/ month;

4. Decoration: package decoration,gift box;

5.Strength:laser painting, decal printing, frost.

Sunny's Advantages:

1.Main products: glass cups,glass tea pot,wine cup, glass candle holder,bowl,dish,etc;

2.Process like decal printing(logo printing), spraying colors, frosting;

3.Crafts: man made, Machine pressed, machine blown, hand made;

4.Strength:spray color,laser painting, decal printing, frost.

5.Capability: about 0.5-1 million/ month;

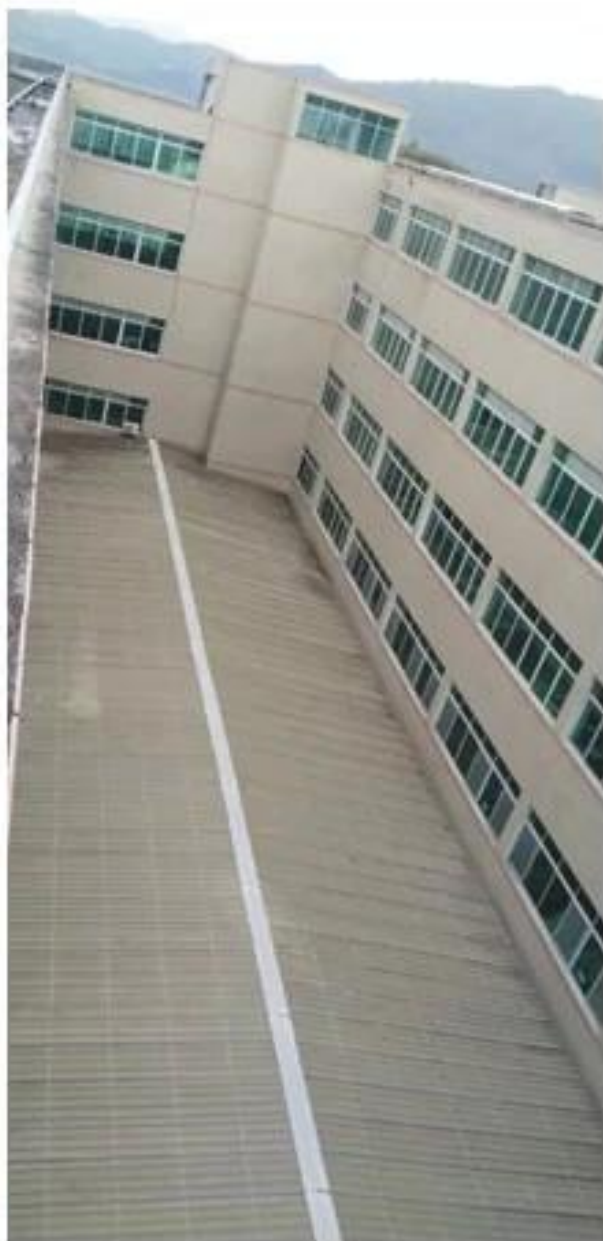
6.Decoration: Package decoration, gift box;

7.pass FDA,lead&cadmium safe;

8.7-14 days sample lead time ;

9.Within 35 days production lead time.

Our Facotry:



Production:



Certificate:

	
Test Report	No.: GZ0806114365/CHEM Date: JUL 02 2008 Page 1 of 4
SHANXI SUNNY GLASSWARE FACTORY SHENZHEN OFFICE RM 204, BAOHU BUILDING, DONGHU ROAD, LUOHU DISTRICT, SHENZHEN, GUANGDONG, CHINA	
The following sample(s) was/were submitted and identified on behalf of the applicant as Coffee glass	
SGS Ref No.	: SZ11126876
Buyer	: TEDI
Manufacturer	: SHANXI SUNNY GLASSWARE FACTORY
Country of Origin	: CHINA
Country of Destination	: GERMANY
Sample Receiving Date	: JUN 26, 2008
Testing Period	: JUN 26, 2008 TO JUL 02 2008
Test Requested	: In accordance with German Food, Articles of Daily Use and Feed Code of September 1, 2005 (LFGB), Section 30 & DIN 51032:1986.
Test Method	: With reference to EN 1388: 1995. Analysis was performed by Inductively Coupled Argon Plasma Spectrometry.
Conclusion	: When tested as specified, the submitted sample(s) do not comply with the limit as stated the German Food, Articles of Daily Use and Feed Code of September 1, 2005 (LFGB), Section 30.
Signed for and on behalf of SGS-CSTC Ltd.	
 Wang HongLei, Leo Sr. Engineer	 ASTM INTERNATIONAL Standards Worldwide
<small>This document is issued by the Company under its General Conditions of Service printed overleaf or available on request and accessible at http://www.sgs.com/terms_and_conditions.htm. Attention is drawn to the limitation of liability, indemnification and jurisdiction issues defined therein. Any holder of this document is advised that information contained herein reflects findings at the time of its intervention only and within the limits of Client's instructions, if any. The Company's sole responsibility is to its Client and this document does not generate parties to a transaction from exercising all their rights and obligations under the transaction documents. Any unauthorized alteration, forgery or falsification of the content or appearance of this document is unlawful and offenders may be prosecuted to the fullest extent of the law. Results shown in this test report refer only to the sample(s) tested. This document cannot be reproduced except in full, without prior approval of the Company.</small>	
 SGS Suzhou Development Technology Co., Ltd. Surveillance Service Center Laboratory	188 Kefa Road (Suzhou) Park Guangzhou East Asia Technology Development District (Guangzhou) China 510663 T: (86-20) 82155555 F: (86-20) 82075125 www.cn.sgs.com 中国·广州·经济技术开发区科学城科韵路198号 邮编: 510663 T: (86-20) 82155555 F: (86-20) 82075125 e: sgs.china@sgs.com Member of the SGS Group (SGS SA)

[Home page](#)