

recém chegados castiçais de cerâmica



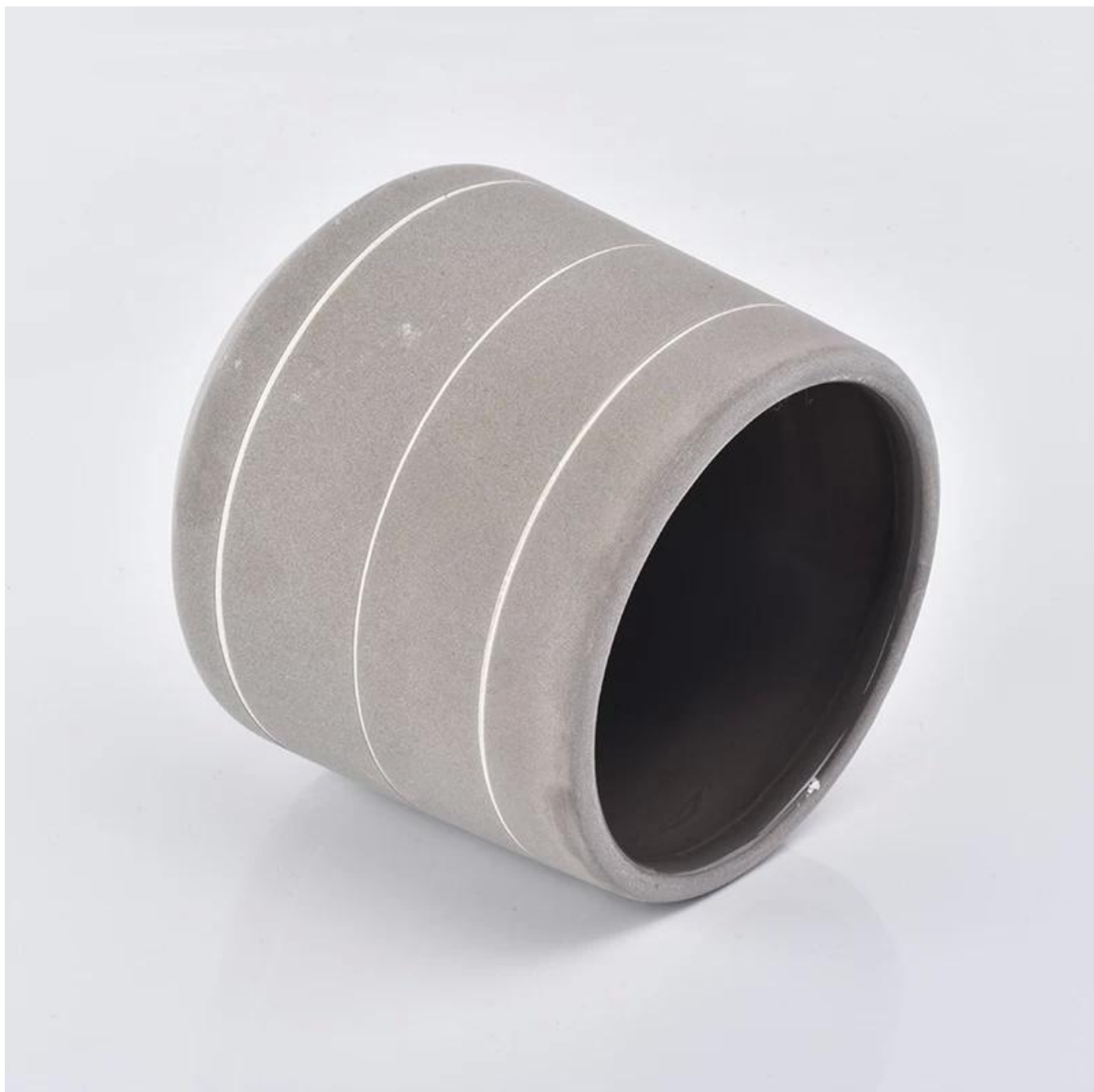
Product Details

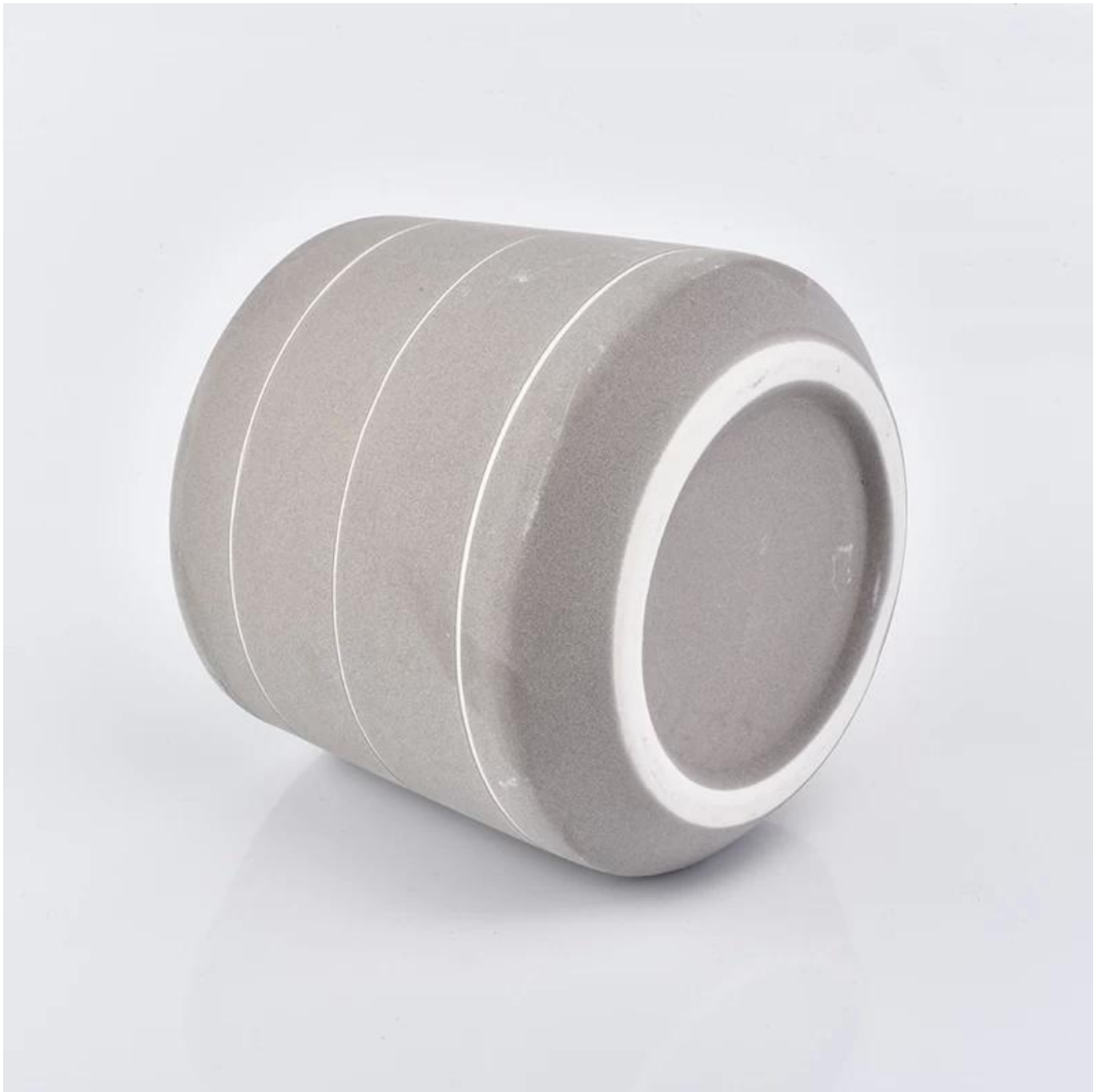
Nome do elemento	recém chegados castiçais de cerâmica
Número de item	SGGH19011602
Corte Isso	Diâmetro superior: 92 mm Diâmetro inferior: 103 mm Altura: 93 mm Peso: 252g Capacidade: 495ml Outros tamanhos: 5 onças / 8 onças / 10 onças / 16 onças também estão disponíveis
Capacidade	10 onças 14 onças 16 onças etc. Está disponível
Tempo de amostragem	1,5 dias se a forma e o tamanho dos produtos existirem 2,15 dias se você precisar de uma nova forma e tamanho dos produtos
pacote	24pcs / 36pcs / 48pcs embalagem regular de segurança e assim por diante. Para embalagem de exportação com divisor de ovo
MOQ	3000
Tempo de entrega	Dentro de 35 dias após a confirmação do pedido
Termos de pagamento	Depósito de 30% por T / T adiantado, o saldo após mostrar a cópia de B / L
Características do produto	<ol style="list-style-type: none">1. Alta qualidade e preços competitivos2. Teste de FDA, SGS, LFGB etc.3. Eco amigável4. É amplamente voltado para casamentos, festas, casa, bares, etc.5. máquina feita



More Product Pictures











storage product ranges.

"The easiest way to spoil the look of a kitchen is uncluttered," says a spokesperson for Premier Housewares. "Getting kitchen storage that matches your design themes is essential, everything should have a place. Food that comes in flashy packaging should be in cupboard, or moved into containers, so everything in the kitchen looks like it is designed to be there."

The Grub Tub range includes polypropylene lunch boxes in a number of bright colours that have several useful features. The box has two separate containers and it comes with plastic cutlery and grips to hold them. There's a stackable cup, and a cool bag big enough to hold it all. There's an elastic strap to keep the box sealed and an elastic ring inside the bag to hold the cup in place. Grub Tub also includes various shapes and sizes of air-tight, transparent, polystyrene and silicone food storage containers. It's a range for anything you can think of for lunch on-the-

Pyrex

Hall 3.0 Stand D41

to reveal its new brand

with an ever-growing

at expanding its 100th

is bounded to further

its Pyrex (D41) Area

d to come at Amherst

to the Pyrex brand - a

brand brand that has so

popular glass was the

duct range in 1915 and

now to be a highlight

Pyrex. Pyrex will also

ing greater metal base

new design range, while

one been added to the

of these ranges will also

has their range. Expert

with the ever-popular

and healthy cooking

www.pyrex.com

uk.co.uk/pyrex.com



For 2017, Finum is expanding its collection of two functional coffee brewers. Bloom and Flow is a new pour-over coffee and tea brewer consisting of a stylish glass carafe and a unique funnel insert which provides an optimised bloom and flow of coffee through the paper cone. Made in Germany, it comes with a funnel adapter which converts Bloom and Flow into a pour-over tea brewer.

Coffee Sprinter, a single-up coffee brewer (pictured), is the solution to ultimate freshness - place the Coffee Sprinter on a mug or cup and add ground coffee into the filter, the water distributor is inserted to press the ground coffee flat to the stainless steel mesh at the bottom. Hot water passes the ground coffee and fills the mug below.

BergHoff

Hall 3.0 Stand D80

your brand BergHoff will ensure a maximum of kitchen products to be

up space has secured the best design award - the award of excellence in

of its latest collections has won the award of excellence in the kitchen

award for the best design award in the world.

the award of excellence in the kitchen

award of excellence in the kitchen

award of excellence in the kitchen



Kelqa

Hall 1.2 Stand E30, E70

introduced in 1983 and stands as a

highly innovative design in the

range of quality products for the

home and bathroom. Kelqa has

will present for the first time

products for the first time



KitchenAid

Hall 3.1 Stand E50

KitchenAid long known for its unmatched performance, durability and iconic design of its countertop appliances, will introduce its most powerful home blender on the market. The new professional grade Kisses Power Plus Blender takes health conscious consumers to the next level.

For the first time since the introduction of the original The Hero Series by Sprint Hires in 1956, KitchenAid has introduced a new version of its iconic culinary workhorse for a new generation of blenders who value limited space and have smaller health lifestyles. Offering the same power and performance as its larger model, the Hero Series is 20 per cent smaller and 25 per cent lighter than its 3.5 litre model. The mixer accommodates all optional hub-based attachments available for the larger model, so there are endless possibilities from spiraling to juicing and making pasta.

Original launch in four colours - Heritage, Matte Black, Matte Grey and Silver - KitchenAid has some exciting new colour introductions in 2017.

www.kitchenaid.co.uk









As características do vidro soprado por mês

1. Sua vantagem inclui escultura de abundância, técnicas, efeitos de superfície, cor etc.
2. A qualidade é uma verificação difícil e a tolerância de tamanho, peso e forma é maior.
3. O preço é alto e o produto é limitado para vidros técnicos especiais.

Método de aplicação

1. Usando-o sob a orientação de um adulto
2. Lave com água limpa ou morna antes de usar
3. Não toque na borda do copo de vidro, tente pegar o fundo ou a alça dele

Precauções

1. Cerveja, vinho tinto, vinho branco, bebida ou água quente não devem estar muito cheios
2. Para evitar machucar as mãos de seus filhos, coloque-os onde eles não possam alcançar
3. Evite quedas, colisões e impactos fortes
4. Não disponível para forno de microondas
5. Para evitar que se quebre, não coloque-o diretamente no fogo

Para mais [candelabro](#) ou qualquer vidro,

Por favor, visite o nosso web site: <http://www.okcandle.com/>

Ou aqui pode ajudá-lo a saber melhor do que nós: [Perguntas frequentes](#)

[Aguardamos seu pedido e cooperação.](#)