

# Beautiful color pearl glaze ceramic candle jars



## Product Details

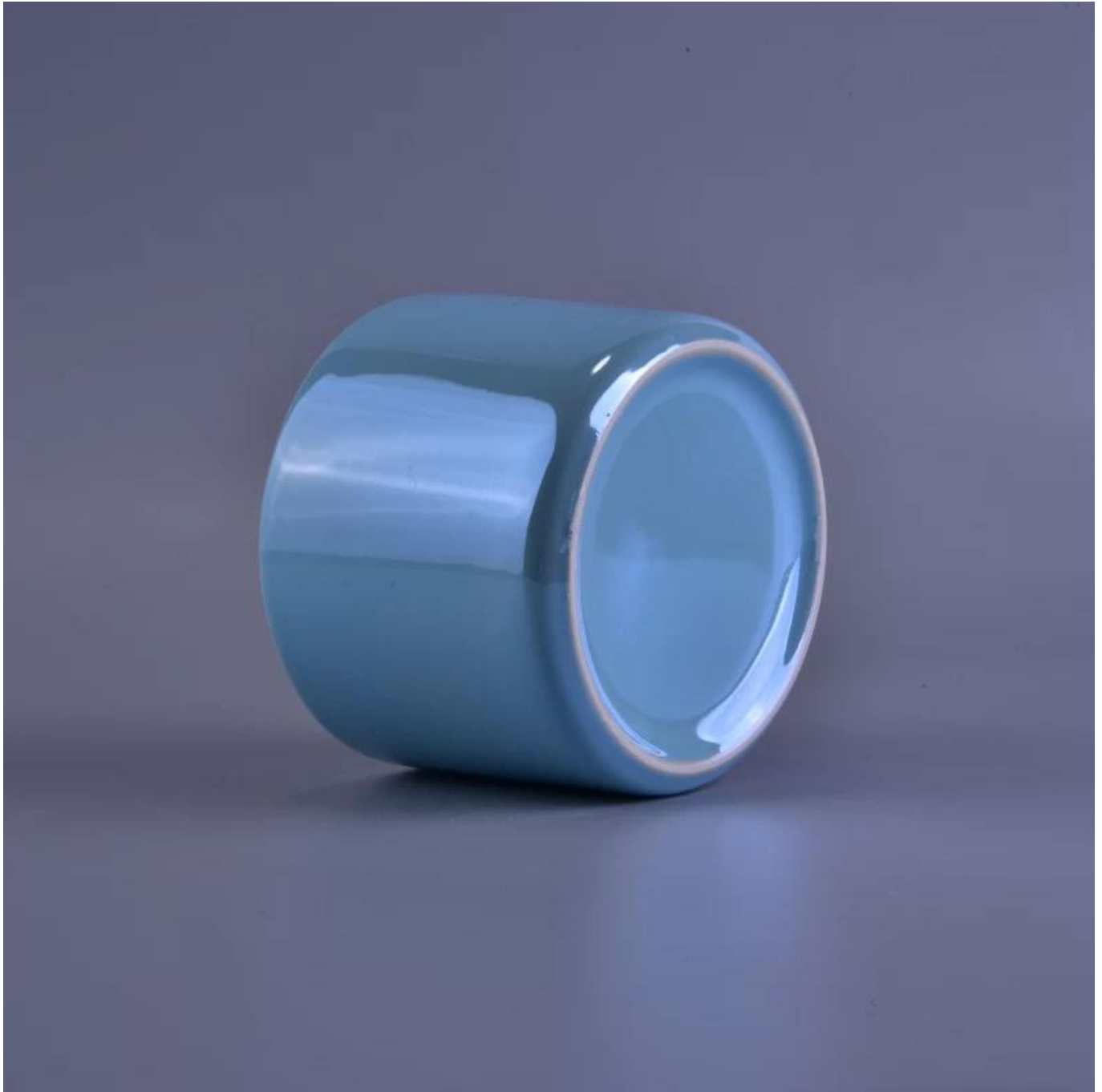
Item number.	SGSN16121611
Material	Ceramic/porcelain
Handle	<a href="#">Hand made candle holder</a>
Samples time	1. 5 days if there is a form and size of the glass 2. 15 days, if you need a new shape and size glass
Packaging	Normal packing, 4 pieces in inner box, 48 pieces in box
Product Capacity	500,000 ~ 1,000,000 pieces per month
Product Features	1. Hade made <a href="#">Votive candle holder</a> from high quality 2. Suitable for use in hotel, house, wedding <a href="#">ceramic candle holder</a> etc. 3. Eco-friendly <a href="#">candlestick</a> , unique shape <a href="#">ceramic candle container</a> . 4. Meet FDA test ;ASTM; CA 65 test
Delivery time	Within 35 days after the sample and in order confirmed
Shipment	By sea, by air, by express and the delivery agent acceptable











## Payment terms

---

1. 30% deposit by T / T in advance, the balance after showing the copy of B / L
2. L/C, Escrow, T/T and Western Union can be acceptable, but different countries different payment terms.

## Professional services

---

1. Various designs and sizes [candle holders](#) for selection.
2. Any color painted, cold, electroplating, laser, glazing [candle jar](#) model Processing is available
3. Special package as shrink film, color gift box, white gift box, etc.
4. We are exclusive of employees for quality control
5. We have a professional workshop and warehouse for ensure delivery time

## Product Usage

1. Perfect for wedding decoration, home decoration, party, banquet ect,
2. Perfect as a gorgeous centerpiece for an event
3. It can decorate your indoors and outdoors with this delicated rose figure glass [candle holder](#).
4. It is wonderful gift as housewarmings and other events.



## More Product Pictures



## Office & Sample Room

[Shenzhen Sunny Glassware Co.,Ltd](#) was established in 1992. We have been in this industry area for more than 20 years, as a professional manufacturer, we specialized in designing glassware, manufacturing glassware as well as exporting. Our products lines range from handmade to machine made. We already produced abundant products such as [glass tumbler](#), [borosilicate glass](#), [shot glass](#), [vase](#), [bowl](#), [candle holder](#), [stemware](#), [ashtray](#), [tabkeware](#), [driking glass](#), etc. all the daily use glassware, in total there are more than 4,000 different styles. We have an excellent design team for innovative product creation and strict QC team for quality asurance. OEM/ODM serverice are supported as well.











# ASTM







For more [ceramic candle holder](http://www.okcandle.com/) or any glassware,  
 please visit our website: <http://www.okcandle.com/>  
 Or, can help you learn more about us: [FAQ](#)

