

## 2019 Ilayini entsha yendalo

### Product Details

Igama lefayile	<b><u>Uluhlu oluphezulu kunye noyilo olukhulu lweCeramic Isibambi se-candles</u></b>
Inani lento	SGSJ19042408
Sika	Inani lenqaku: SGMK19030113 Umda ophezulu: 90mm Umphantsi we Dia: 86mm Ubude: 80mm Ubunzima: 252g Ubukhulu: 321ml  Ezinye ubungakanani: 5 ounces / 8 ounces / 10 ounces / 16 ounces zikhona
Ubukhulu	10oz 14oz 16oz njl njl. Ikhona
Ixesha lokulinganisa	1.5 iintsuku ukuba ubume nobungakanani bemveliso zikhona 2.15 iintsuku ukuba ufuna ubume obutsha nobungakanani bemveliso
i-package	24pcs / 36pcs / 48pcs ukukhusela okuqhelekileyo kwakunye njalo.Kwinqwelo yokuthumela inqwelo enomahluli wamaqanda
MOQ	3000pcs
Ixesha lokuthumela	Ngeentsuku ezingama-35 emva kokuba umyalelo uqinisekise
Amagama	30% ukubekwa ngoT / T phambili, umlinganiselo emva kokubonisa ikhopi ye B / L
Iimpawu zomveliso	1.Umgangatho ophezulu namaxabiso 2.Uvavanyo lweFDA, SGS, LFGB njl. 3.Uhlobo lweenkonzo 4.Injongwa ngokubanzi ekuzaliseni, amaqela, ekhaya, iibar, njl njl. 5.i-machine yenziwe

### More Product Pictures

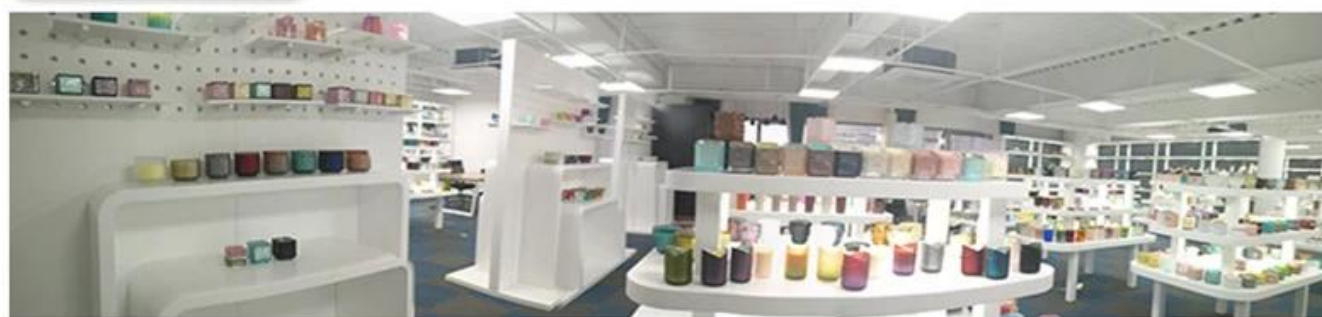






Office & Sample Room





## Factory Show





### **Iimpawu zesiglasu esiphezulu enyangeni**

1. Uncedo lwayo kuquka umqolo wobuninzi, ubuchule, iziphumo zomphezulu, umbala njalo njalo njalo.
2. Uhlolo olunzima nobunzima bokubungakanani, ubunzima kunye nesimo kukhulu.
3. Ixabiso eliphezulu kwaye imveliso ilinganiswe kwiglasu yobugcisa olukhethekileyo.

### **Indlela yokusebenza**

1. Ukusetyenziswa phantsi kwesikhokelo sabadala
2. Yihlambe ngamanzi acolileyo okanye ishushu phambi kokusetyenziswa
3. Musa ukuchukumisa umphetho wenkep yeglasu, zama ukuthatha phantsi okanye ukuphatha kwayo

### **Izicwangciso**

1. Ibheri, iwayini ebomvu, iwayini emhlophe, isele okanye amanzi oshushu angazali kakhulu
2. Ukuba kungabi nobubi besandla sabantwana bakho, yibeke apho bangafikeleli khona
3. Kuthintela ukuwa, ukungqubana neziphumo ezinamandla
4. Akukho kwi-oven ye-microwave
5. Ukuthintela ukuphuka, ungayibeki ngqo emlilweni

Ngenxa [candle holder](#) okanye nayiphi na iglasu,

Nceda Khangela i-webhusayithi yethu: <http://www.okcandle.com/>

Okanye apha ingakunceda ukwazi okungcono kunathi: [FAQ](#)

[Silindele isicelo sakho kunye noncedo.](#)

## **[Iphepha lasekhaya](#)**