

2oz 3oz 8oz 14oz engqukuva engqukuva ingqayi emhlophe yematte enesiciko sesivalo

Product Details

Igama lesiqalelo	2oz 3oz 8oz 14oz engqukuva engqukuva ingqayi emhlophe yematte enesiciko sesivalo
Ixesha lesampuli	lintsuku ezi-1.5 ukuba imilo kunye nobukhulu beemveliso zikhona lintsuku ze-2.15 ukuba ufuna imilo entsha kunye nobukhulu beemveliso
Ukupakishwa	24pcs / 36pcs / 48pcs ukupakisha ukhuseleko rhoqo njalo njalo Kwibhokisi yokuthumela ngaphandle eneqanda
MOQ	5000pcs
Ixesha lokuzisa	Kwiintsuku ezingama-35 emva kokuba umyalelo uqinisekisiwe
Immimiselo yokuhlawula	I-30% yediphozithi ngu-T / T kwangaphambili, ibhalansi emva kokubonisa ikopi ye-B / L
Iimpawu zemveliso	<ol style="list-style-type: none">1. Umgangatho ophezulu kunye namaxabiso akhuphisanayo2. Ukuvavanya i-FDA, i-SGS, i-LFGB njl.3. Eco Friendly4. Ijolise kakhulu kuMtshato, itheko, ikhaya, imivalo njl.5. Umatshini owenziwe

More Product Pictures





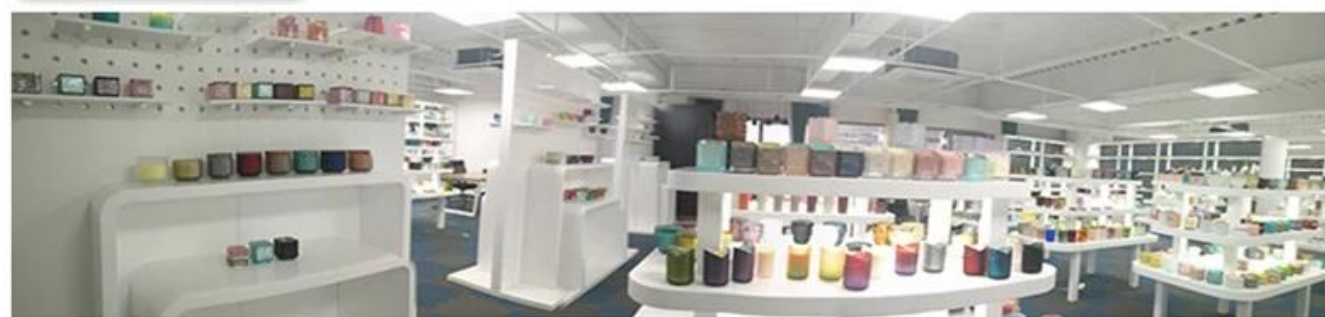







Office & Sample Room





Factory Show

01

Factory



Surface Treatment

10+ production lines



□ Spraying



□ Engraving



□ Electroplating



□ Silk-screen



- Spraying
- Engraving
- Electroplating
- Silk-Screen



Iimpawu zeglasi evuthelweyo ngenyanga

1. Inzuzo yayo ibandakanya umzobo wobuninzi, ubuchule, iziphumo ezingaphezulu, umbala njl.
2. Umgangatho uyitshekhi enzima kunye nokunyamezela ubungakanani, ubunzima kunye nokuma kukhulu.
3. Ixabiso liphezulu kwaye imveliso ilinganiselwe kwiglasi ekhethekileyo yobugcisa.

Indlela yokusetyenziswa

1. Ukuyisebenzisa phantsi kolwalathiso lomntu omdala
2. Yihlambe ngamanzi acocekileyo okanye ashushu phambi kokuba uyisebenzise
3. Ungachukumisi isiphelo sekomityi yeglasi, zama ukuthatha umphantsi okanye umqheba wayo

Ukulumkela

1. Ibhiya, iwayini ebomvu, iwayini emhlophe, isiselo okanye amanzi ashushu akufunekanga agcwale kakhulu
2. Ukunqanda ukulimaza isandla sabantwana bakho, nceda ubabeke apho bangenakufikelela khona
3. Kuphephe ukuwa, ukungqubana kunye nempembelelo enamandla
4. Ayifumaneki kwi-oven microwave
5. Ukuthintela ukuphuka, musa ukuyibeka ngqo emlilweni

Ngokungakumbi [isiphatho sekhandlela](#) okanye nayiphi na iglasi,

Nceda undwendwele iwebhusayithi yethu: <http://www.okcandle.com/>

Okanye nantsi inokukunceda wazi ngcono kunathi: **FAQ**

[Silindele isicelo sakho kunye nentsebenziswano.](#)

[Iphepha lasekhaya ngasemva](#)