

# I-334ml yokufaka umbala kwi-Aluminium Camera Candle Holder Set

## Product Details

Inombolo yento.	SGJBS17060902B
Izinto eziphathekayo	Aluminiyam Metal Candle Holder
Ubugcisa	eyenziwe ngomatshini
Ixesha leesampulu	1. Iintsuku ezi-5 ukuba kukho ifom kunye nobukhulu 2. Iintsuku ezili-15, ukuba ufuna imilo entsha nobungakanani
Amandla emveliso	Iziqwenga ezingama-500,000 ~ 1,000,000 ngenyanga
Iimpawu zeemveliso	1. Umatshini Wenziwe ngeAluminiyam Metal Holder Candle Holder ukusuka kumgangatho opezulu. 2. Ingafafazwa nayiphi na imibala, nokuba isilivere okanye igolide yonyuliweyo. 3. Ilungele ukusetyenziswa ehotele, endlwini, njl. 4. Eco-friendly. 5. Dibana novavanyo lwe-FDA, i-ASTM, Uvavanyo lwe-CA 65

## More Details

<b>Ixesha lokuzisa</b>	1. Kwiintsuku ezingama-35 emva kwesampulu kunye nokulandelelana ngokulandelelana. 2. Ngaphandle kweentsuku ezi-7 ukuba sinempahla
<b>Immimiselo yokuhlawula</b>	1. 30% idiphazithi ngo-T / T kwangaphambili, intsalela emva kokubonisa ikopi ye-B / L. 2. I-L / C, i-Escrow, i-T / T kunye ne-Western Union zinokwamkeleka, kodwa amazwe ahlukeneyo aneendlela ezahlukeneyo zokuhlawula.
<b>Ukupakisha &amp; Indlela yokuhambisa ngenqanawa</b>	x izibuko elahlula amaqanda 2. Elwandle, ngomoya, ngokubonisa kunye nearhente yokuhambisa eyamkelekileyo njengemfuneko yakho.

Yintoni esingakwenzela yona

1. Uyilo olwahlukeneyo kunye nobukhulu ekukhetheni
2. Nawuphi na umbala opeyintiweyo, obandayo, owenziwe ngombane, imodeli ye-laser yokusika
3. Iphakheji ekhethekileyo enje ngokuncipha kwefilimu, ibhokisi yesipho sombala, ibhokisi yesipho esimhlophe, njl.

4. Singabasebenzi kuphela kulawulo lomgangatho ukuthembisa umgangatho.
5. Sineworkshop yobungcali kunye nendawo yokugcina izinto ukuqinisekisa ixesha lokuhanjiswa

#### Ukusetyenziswa kweMveliso

---

1. I-Aluminium Metal canlde holders ingasetyenziselwa ukuhlobisa umtshato, ukuhlobisa ikhaya, ipati, i-ect ect,
2. Esi sitya sekhandlela sikhulu kakhulu njengendawo entle esebindini womnyhadala
3. Iingqayi zeAluminiyam zetsimbi zinokuhombisa ngaphakathi nangaphandle ngeziphumo ezahlukeneyo, ezinje ngombala wokutshiza, isilivere okanye i-elektroniki yegolide.
4. Isitya sekhandlela seAluminiyam sisipho esihle njengokufudumala ezindlini kunye neminye iminyhadala.



More Product Pictures





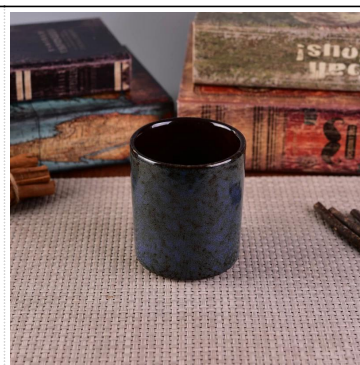








[Similar Products Link](#)



## Office & Sample Room

[I-Shenzhen i-Sunny Glassware Co, kunye ne-Ltd](#) yasekwa ngo-1992 sineminyaka engaphezu kwama-20 sikule ndawo yolu shishino, njengomvelisi oqeqeshiweyo, ngokukodwa ekuyileni iiglas, ukuvelisa iiglas kunye nokuthumela ngaphandle. Imigca yethu yeemveliso ivela kwizinto ezenziwe ngezandla ukuya kumatshini owenziweyo. Sele sivelise iimveliso ezininzi njenge [iglas yokuwa](#), [iglas ye-borosilicate](#), [iglas yokudubula](#), [ivasi](#), [isitya](#), [isiphatho sekhandlela](#), [istware](#), [i-ashtray](#), [i-tableware](#), [iglas yokuqhuba](#), [njl.](#).. yonke imihla yokusetyenziswa kweglas, xa zizonke kukho iindlela ezingaphezu kwama-4,000 ezahlukeneyo. Sineqela eliyilo loyilo lokuyila imveliso kunye ne-QC engqongqo yokuqinisekisa umgangatho. Iseva ye-OEM / i-ODM iyaxhaswa nayo.











Ngakumbi [yodongwe isiphatho sekhandlela](http://www.okcandle.com/) okanye nayiphi na iiglas, Nceda undwendwele iwebhusayithi yethu: <http://www.okcandle.com/> Okanye, inokukunceda ufunde ngakumbi ngathi: [FAQ](#)