

# Isikhongozeli esikhulu sekPhathala lekhandlela yodongwe nesiciko somthi

## Product Details

Inombolo yento.	SGJF16062303
Izinto eziphathekayo	I-Ceramic / porcelain
Handle	<a href="#">Isiphatho sekhandlela esenziwe ngesandla</a>
Ixesha leesampulu	1. Iintsuku ezi-5 ukuba kukho ifom kunye nobungakanani beglasi 2. Iintsuku ezili-15, ukuba ufuna imilo entsha kunye neglasi yesayizi
Ukupakisha	Ivale Ngesiqhelo, iziqwenga ezi-4 kwibhokisi yangaphakathi, iziqwenga ezingama-48 ebhokisini
Amandla emveliso	Iziqwenga ezingama-500,000 ~ 1,000,000 ngenyanga
Iimpawu Product	1. IHade yenziwe <a href="#">Isiphatho sekhandlela esivotiweyo</a> ukusuka kumgangatho ophezulu 2. Ilungele ukusetyenziswa ehotele, endlwini, emtshatweni <a href="#">yodongwe</a> <a href="#">Isiphatho sekhandlela</a> njl. 3. Eco-friendly <a href="#">isiphatho sezibane</a> , Ubume obahlukileyo <a href="#">Isikhongozeli sekhandlela yodongwe</a> . Uvavanyo lwe-ASTM luphumelele
Ixesha lokuzisa	Kwisithuba seentsuku ezingama-35 emva kokuba isampulu kunye ukuze uqinisekise
Ukuthunyelwa	Ngolwandle, ngomoya, ngokubonisa kunye ne-arhente yokuhambisa eyamkelekileyo

## Immimiselo yokuhlawula

1. 30% idiphozithi ngo-T / T kwangaphambili, intsalela emva kokubonisa ikopi ye-B / L.
2. I-L / C, i-Escrow, i-T / T kunye ne-Western Union zinokwamkeleka, kodwa amazwe ahlukeneyo ngokwemiqathango yentlawulo.

## Iinkonzo zobungcali

1. Uyilo kunye nobukhulu obahlukeneyo [iziphatho zezibane](#) yokhetho.
2. Nawuphi na umbala opeyintiweyo, obandayo, owenziwe ngombane, laser, Injengokubengezela [ingqayi yekhandlela](#) Ukwenziwa kwemodeli kuyafumaneka
3. Iphakheji ekhethekileyo yokuncipha ifilimu, ibhokisi yesipho sombala, ibhokisi yesipho esimhlophe, njl.
4. Singabasebenzi kuphela kulawulo lomgangatho
5. Sineworkshop yobungcali kunye nendawo yokugcina izinto ukuqinisekisa ixesha lokuhlanjiswa

## Ukusetyenziswa kweMveliso

1. Ulungele ukuhlanjiswa komtshato, uhombiso lwasekhaya, ipati, i-ect yesidlo,

2. Igqibelele njengendawo entle esebindini womnyhadala
3. Iyakwazi ukuhombisa ngaphakathi nangaphandle kwesi sixhobo sekhandlela seglasi.
4. Sisipho esihle njengokufudumala ezindlini kunye neminye iminyhadala.

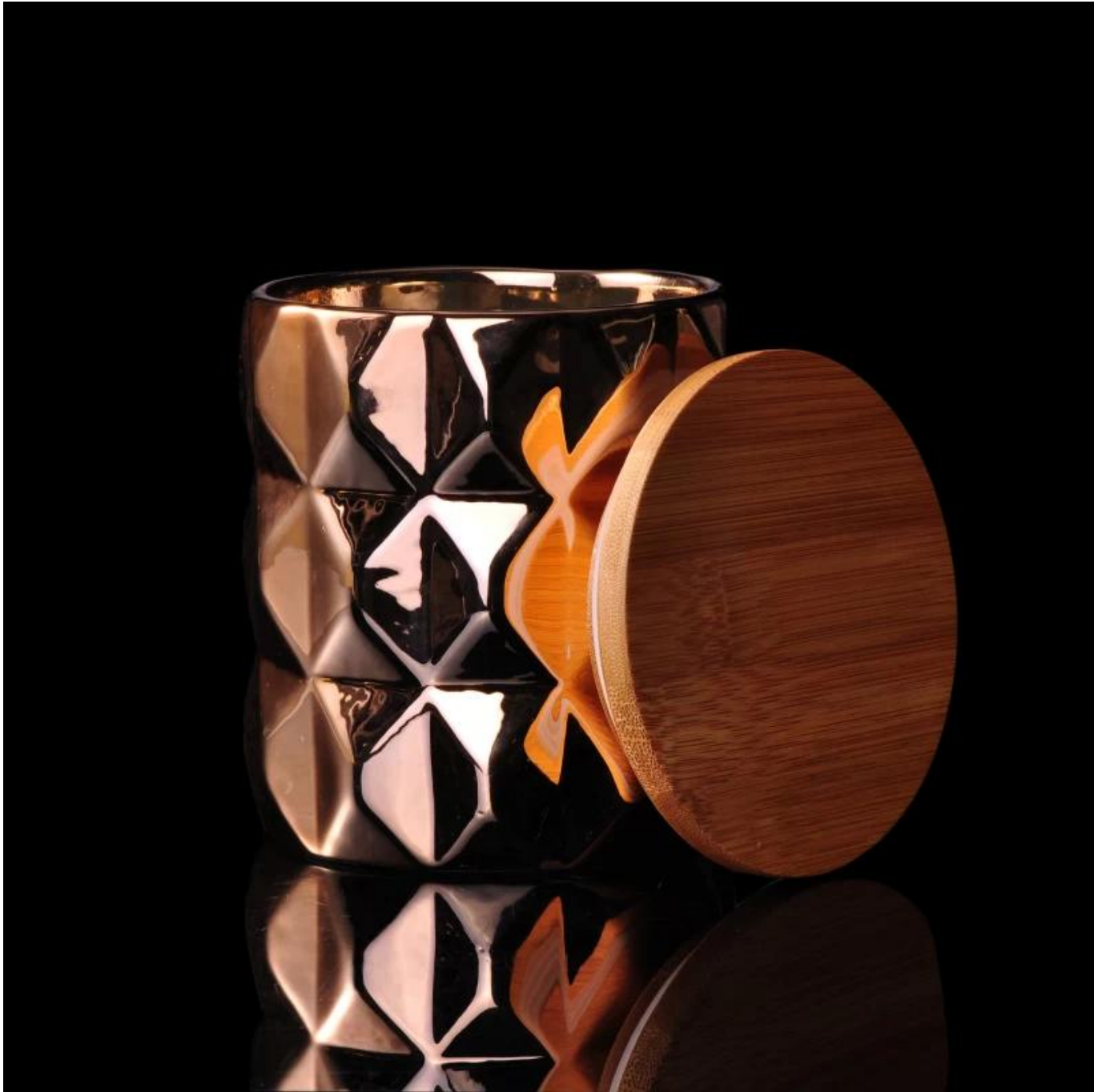
## More Product Pictures

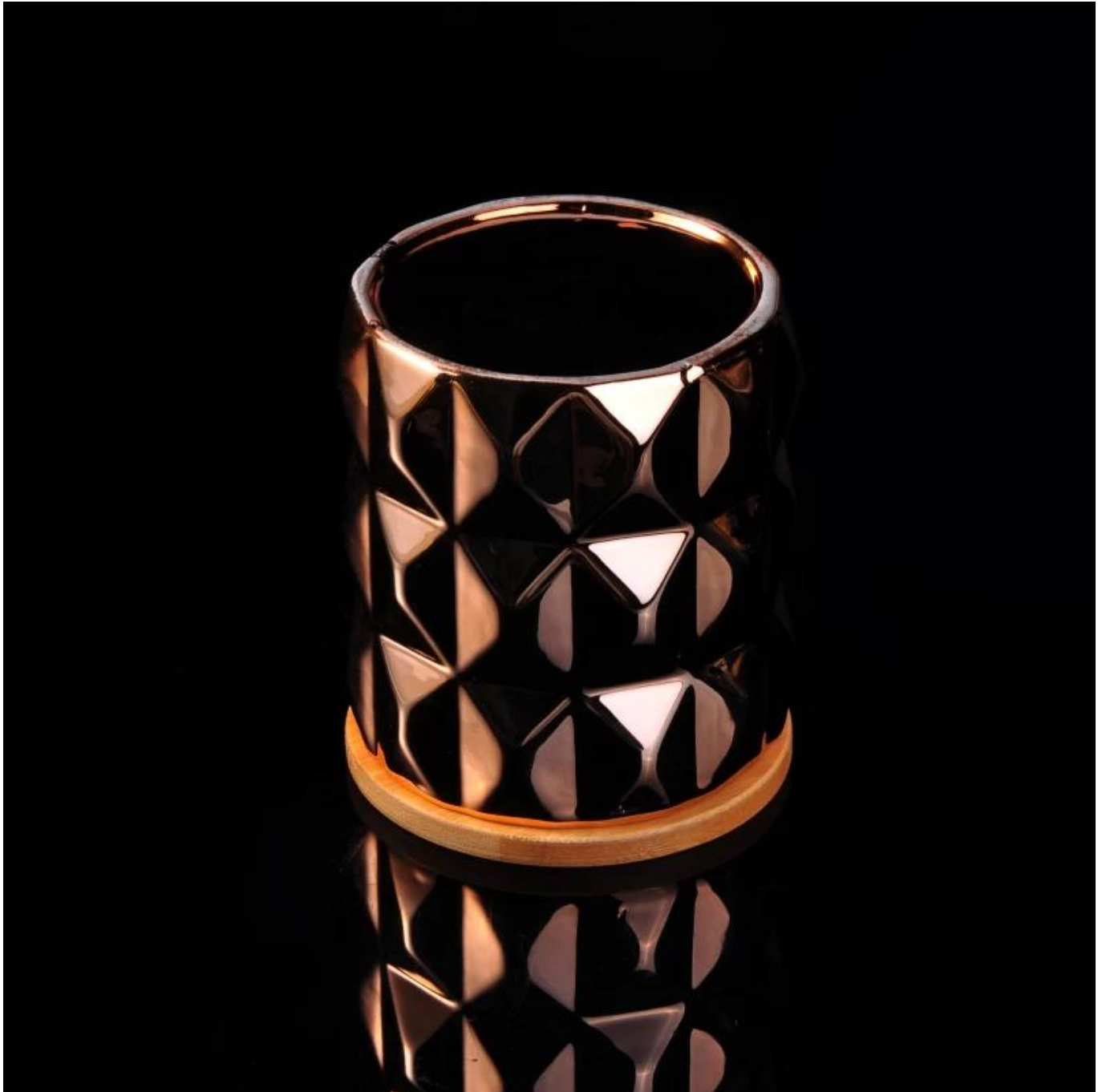












## Office & Sample Room

[I-Shenzhen i-Sunny Glassware Co. kunye ne-Ltd](#) yasekwa ngo-1992 sineminyaka engaphezu kwama-20 sikule ndawo yolu shishino, njengomvelisi oqeqeshiweyo, ngokukodwa ekuyileni iiglas, ukuvelisa iiglas kunye nokuthumela ngaphandle. Imigca yethu yeemveliso ivela kwizinto ezenziwe ngezandla ukuya kumatshini owenziweyo. Sele sivelise iimveliso ezininzi njenge [iglas yokuwa](#), [iglas ye-borosilicate](#), [iglas edutyuliweyo](#), [ivasi](#), [isitya](#), [isiphatho sekhandlela](#), [i-stemware](#), [i-ashtray](#), [i-tabkeware](#), [iglas yokuqhuba](#), njl.. yonke imihla yokusetyenziswa kweglas, xa zizonke kukho iindlela ezingaphezu kwama-4,000 ezahlukeneyo. Sineqela eliyilo loyilo lokuyila imveliso kunye ne-QC engqongqo yokuqinisekisa umgangatho. Iseva ye-OEM / i-ODM iyaxhaswa nayo.









**S** SUNNY

ASTM

