

## libheyile ezipheleleyo zeCandle Black Cement

### Product Details

Igama lefayile	libheyile ezipheleleyo zeCandle Black Cement
Inani lento	SGSJ19042405
Sika	Uphezulu dia: 114mm Umzantsi we dia: 114mm Ubude: 100mm Ubunzima: 604g Umsebenzi: 770ml  Ezinye ubungakanani: 5 ounces / 8 ounces / 10 ounces / 16 ounces zikhona
Ubukhulu	10oz 14oz 16oz njl njl. Ikhona
Ixesha lokulinganisa	1.5 iintsuku ukuba ubume nobungakanani bemveliso zikhona 2.15 iintsuku ukuba ufuna ubume obutsha nobungakanani bemveliso
i-package	24pcs / 36pcs / 48pcs ukukhusela okuqhelekileyo kwakunye njalo.Kwinqwelo yokuthumela inqwelo enomahluli wamaqanda
MOQ	3000pcs
Ixesha lokuthumela	Ngeentsuku ezingama-35 emva kokuba umyalelo uqinisekise
Amagama	30% ukubekwa ngoT / T phambili, umlinganiselo emva kokubonisa ikhopi ye B / L
Iimpawu zomveliso	1.Umgangatho ophezulu namaxabiso 2.Uvavanyo lweFDA, SGS, LFGB njl. 3.Uhlobo lweenkonzo 4.Injongwa ngokubanzi ekuzaliseni, amaqela, ekhaya, iibar, njl njl. 5.i-machine yenziwe

### More Product Pictures







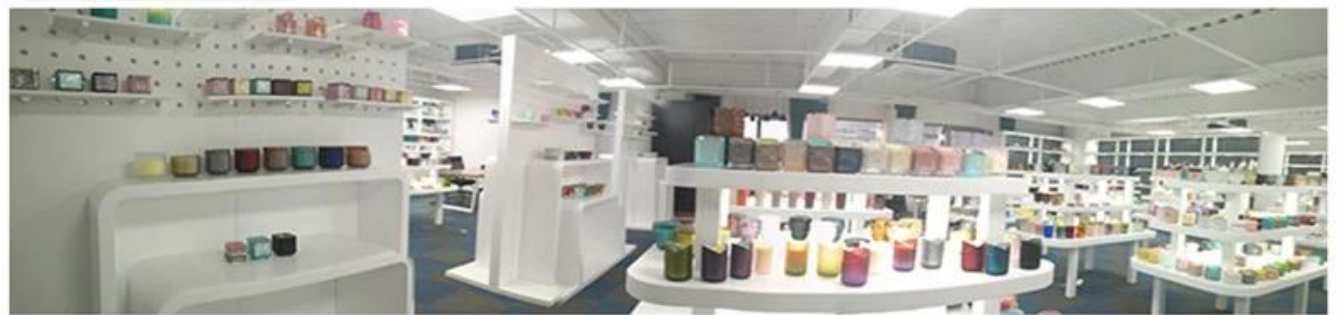






Office & Sample Room







## Certifications



ISO9001:2008



Onsite Audited



Green & Social Compliance

ASTM

FDA



### limpawu zesiglasu esiphezulu enyangeni

1.Uncedo lwayo kuquka umqolo wobuninzi, ubuchule, iziphumo zomphezulu, umbala njalo njalo njalo.

- 2.Uhlolo olunzima nobunzima bokubungakanani, ubunzima kunye nesimo kukhulu.
- 3.Ixabiso eliphezulu kwaye imveliso ilinganiswe kwiglasu yobugcisa olukhethekileyo.

### **Indlela yokusebenza**

- 1.Ukusetyenziswa phantsi kwesikhokelo sabadala
- 2.Yihlambe ngamanzi acolileyo okanye ishushu phambi kokusetyenziswa
- 3.Musa ukuchukumisa umphetho wenkep yeglasu, zama ukuthatha phantsi okanye ukuphatha kwayo

### **Izicwangciso**

- 1.Ibheri, iwayini ebomvu, iwayini emhlophe, iseke okanye amanzi oshushu angazali kakhulu
- 2.Ukuba kungabi nobubi besandla sabantwana bakho, yibeke apho bangafikeleli khona
- 3.Kuthintela ukuwa, ukungqubana neziphumo ezinamandla
- 4.Akukho kwi-oven ye-microwave
- 5.Ukuthintela ukuphuka, ungayibeki ngqo emlilweni

Ngenxa [Isibambi se-candle](#) okanye nayiphi na iglasu,

Nceda Khangela i-webhusayithi yethu: <http://www.okcandle.com/>

Okanye apha ingakunceda ukwazi okungcono kunathi: [FAQ](#)

[Silindele isicelo sakho kunye noncedo.](#)

## **[Iphepha lasekhaya](#)**