



## Product Details

Igama lokuqhubeka	Ukuhombisa Glass ikhandlela ezityeni
Inombolo yento	SGGH19011601
Ubungakanani	Idia ephezulu: 88mm Ezantsi dia: 80mm Ukuphakama: 98mm Ubunzima: 242g Ubungakanani: 400ml
Ixesha lesampulu	lintsuku eziyi-1.5 ukuba ubume kunye nobungakanani beemveliso zikhona lintsuku 2.15 ukuba ufuna imilo entsha kunye nobungakanani iimveliso
MOQ	1000
Ixesha lokuzisa	Kwiintsuku ezingama-35 emva komyalelo oqinisekisiweyo
Immimiselo yokuhlawula	I-30% idiphozithi ngo-T / T kwangaphambili, ibhalansi emva kokubonisa ikopi ye-B / L.
Iimpawu Product	<ol style="list-style-type: none"><li>1. Umgangatho ophezulu kunye namaxabiso okhuphiswano</li><li>2. Uvavanyo lwe-FDA, SGS, LFGB njl.</li><li>3. Eco ubuhlobo</li><li>4. Ijolise ikakhulu kwimitshato, amaqela, amakhaya, imivalo, njl.</li><li>5. Umatshini wenza abaphathi bekhandlela zeglasi</li></ol>



## More Product Pictures





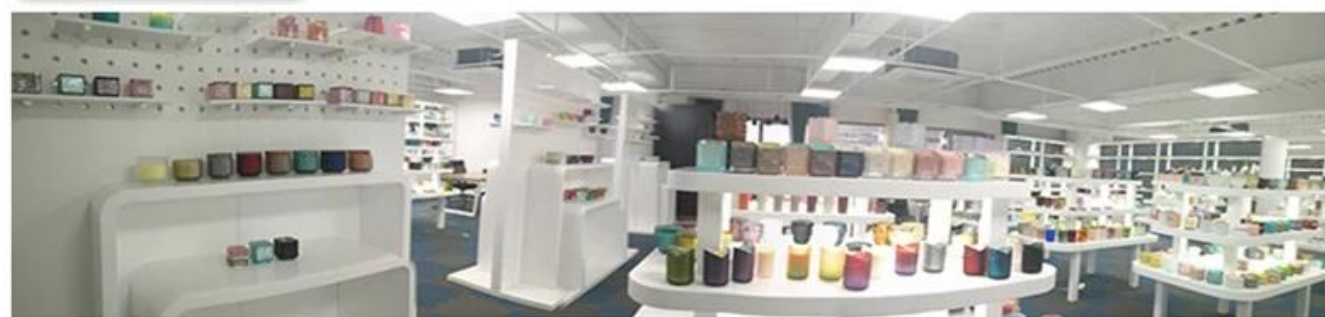






  
Office & Sample Room





Factory Show



01

## Factory



## Surface Treatment

10+ production lines



□ Spraying



□ Engraving



□ Electroplating



□ Silk-screen



- Spraying
- Engraving
- Electroplating
- Silk-Screen



### **Iimpawu zeglasi evuthelweyo ngenyanga**

1. Uncedo lwayo kubandakanya ubuninzi bokukrola, ubuchule, iziphumo zomhlaba, umbala njl.
2. Umgangatho ulawulo olunzima kunye nokunyamezelana kwemilinganiselo, ubunzima kunye nemilo kukhulu.
3. Ixabiso liphezulu kwaye imveliso inqunyelwe kwiglasi ekhethekileyo yobugcisa.

### **Indlela yesicelo**

1. Ukuyisebenzisa phantsi kokhokelo lomntu omdala
2. Yihlambe ngamanzi acocekileyo okanye ashushu ngaphambi kokuba uyisebenzise
3. Musa ukubamba umphetho wendebe yeglasi, zama ukuthatha ezantsi okanye isiphatho sayo

### **Ukulumkela**

1. Ibhiya, iwayini ebomvu, iwayini emhlophe, isiselo okanye amanzi ashushu akufuneki agcwale kakhulu  
Ukuphepha ukwenzakalisa izandla zabantwana bakho, nceda ubabeke apho bangenakufikelela khona
3. Kuphephe ukuwa, ukungqubana kunye neempembelelo ezinamandla
4. Ayifumaneki kwi-oven microwave
5. Ukuyinqanda ukuba ingaphuli, ungayibeki ngqo emlilweni

Ngakumbi [isiphatho sekhandlela](#) okanye nayiphi na iglasi,

Nceda undwendwele iwebhusayithi yethu: <http://www.okcandle.com/>

Okanye apha kunokukunceda wazi ngcono kunathi: **FAQ**

[Silinele isicelo kunye nentsebenziswano.](#)

## **[Lasekhaya umva](#)**