

# Isilivere esiMiselweyo seSilivere esiGqibeleleyo sokuGqibela iiKhandlela zeKhandlela zeCeramic

## Product Details

|                      |  |
|----------------------|--|
| Inombolo yento.      | SGxYT17081204  |
| Izinto eziphathekayo | Isiphatho sekhandlela esenziwe ngodongwe   |
| Ubugcisa             | yenziwe ngesandla lingqayi zeekheram kunye nokushicilelwa  |
| Ixesha leesampulu    | 1. Iintsuku ezi-5 ukuba kukho ifom kunye nobukhulu beceramic<br>2. Iintsuku ezili-15, ukuba ufuna imilo entsha kunye nobukhulu ceramic   |
| Amandla emveliso     | Iziqwenga ezingama-500,000 ~ 1,000,000 ngenyanga   |
| Iimpawu zeemveliso   | 1. Isandla esenziwe <a href="#">uhombiso lwasekhaya lwesibane sekhandlela</a><br>2. esetyenziselwa amakhandlela anevumba elimnandi, i-wax, njl<br>3. Inokuba yimizekelo eyahlukileyo yemibala kunye neemilo ukuba zifuna njalo |

## More Details

|   |   |
|---|---|
| <b>Ixesha lokuzisa</b>                        | 1. Kwiintsuku ezingama-35 emva kwesampulu kunye nokulandelelana ngokulandelelana<br>2. Ngaphandle kweentsuku ezi-7 ukuba sinempahla   |
| <b>Immimiselo yokuhlawula</b>                 | 1. 30% idiphozithi ngo-T / T kwangaphambili, intsalela emva kokubonisa ikopi ye-B / L.<br>2. I-L / C, i-Escrow, i-T / T kunye ne-Western Union zinokwamkeleka, kodwa amazwe ahlukeneyo ngokwemiqathango yentlawulo. |
| <b>Ukupakisha kunye nokuhambisa ngendlela</b> | x izibuko elahlula amaqanda<br>2. Elwandle, ngomoya, ngokubonisa kunye nearhente yokuhambisa eyamkelekileyo njengemfuneko yakho.  |

Yintoni esingakwenzela yona

1. Uyilo olwahlukeneyo kunye nobukhulu ekukhetheni
2. Nawuphi na umbala opeyintiweyo, obandayo, owenziwe ngombane, imodeli ye-laser yokusika
3. Iphakheji ekhethekileyo yokuncipha ifilimu, ibhokisi yesipho sombala, ibhokisi yesipho esimhlophe, njl.
4. Singabasebenzi kuphela kulawulo lomgangatho ukuthembisa umgangatho.
5. Sineworkshop yobungcali kunye nendawo yokugcina izinto ukuqinisekisa ixesha lokuhanjiswa

Ukusetyenziswa kweMveliso

1. Iliceramic canlde holders zingasetyenziselwa ukuhombisa umtshato, uhombiso lwasekhaya, itheko, isidlo njl.

2. Esi sitya sekhandlela sikhulu kakhulu njengendawo entle esembindini womnyhadala
3. Iingqayi zekhandlela zomdongwe zinokuhombisa ngaphakathi nangaphandle kwesi sigcini sekhandlela seglasi.
4. Isitya sekhandlela seceramic Sisipho esihle njengokufudumala ezindlini kunye neminye iminyhadala.

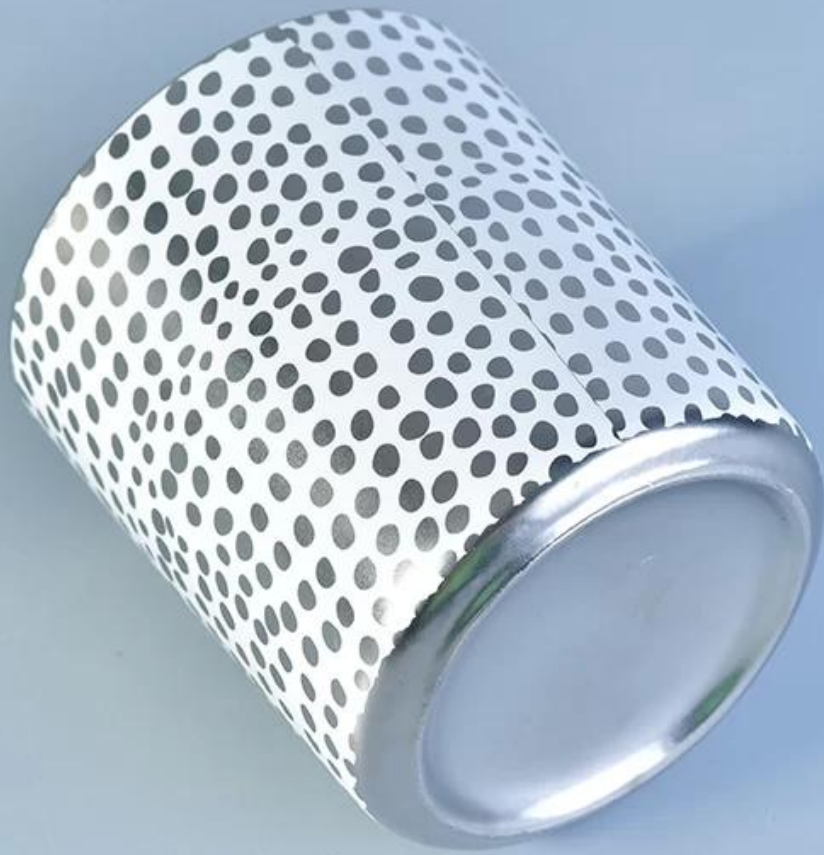


## More Product Pictures











[Similar Products Link](#)



Ukuhonjiswa kwesoyile eyenziwe ngodongwe eyenziwe ngengqayi yekhandlela enevumba elimnandi

Intengiso eshushu ye-matte emhlophe emhlophe yekhandlela isitya sevumba lasekhaya

Marble amakhandlela enuka kamnandi kwisitya sekhandlela yodongwe kunye noshicilelo lweemabula

## Office & Sample Room

I-Shenzhen i-Sunny Glassware Co. kunye ne-Ltd yasekwa ngo-1992 sineminyaka engaphezu kwama-20 sikule ndawo yolu shishino, njengomvelisi oqeqeshiweyo, ngokukodwa ekuyileni iiglas, ukuvelisa iiglas kunye nokuthumela ngaphandle. Imigca yethu yeemveliso ivela kwizinto ezenziwe ngezandla ukuya kumatshini owenziweyo. Sele sivelise iimveliso ezininzi njenge iglas yokuwa, iglas ye-borosilicate, iglas yokudubula, ivasi, isitya, isiphatho sekhandlela, istware, i-ashtray, i-tableware, iglas yokuqhuba, njl.. yonke imihla yokusetyenziswa kweglas, xa zizonke kukho iindlela ezingaphezu kwama-4,000 ezahlukeneyo. Sineqela eliyilo loyilo lokuyila imveliso kunye ne-QC engqongqo yokuqinisekisa umgangatho. Iseva ye-OEM / i-ODM iyaxhaswa nayo.



# \* Production Process



▶ Sculpture



▶ Make Moulds



▶ Inject Clay



▶ Shape forming



▶ Roller Forming



▶ Body Finishing



▶ First Firing



▶ Hand Painting



▶ Decaling



▶ Glazing



▶ Decor Firing



▶ Packing



▶ Warehouse



▶ Loading



▶ Shipping



Ngakumbi [yodongwe isiphatho sekhandlela](#) okanye nayiphi na iiglas, Nceda undwendwele iwebhusayithi yethu: <http://www.okcandle.com/> Okanye, inokukunceda ufunde ngakumbi ngathi: [FAQ](#)