

# Uyilo lwesilinda lweemarle olusebenzayo lwekhonkrithi ingqayi yekhandlela yokuhombisa ekhaya

## Product Details

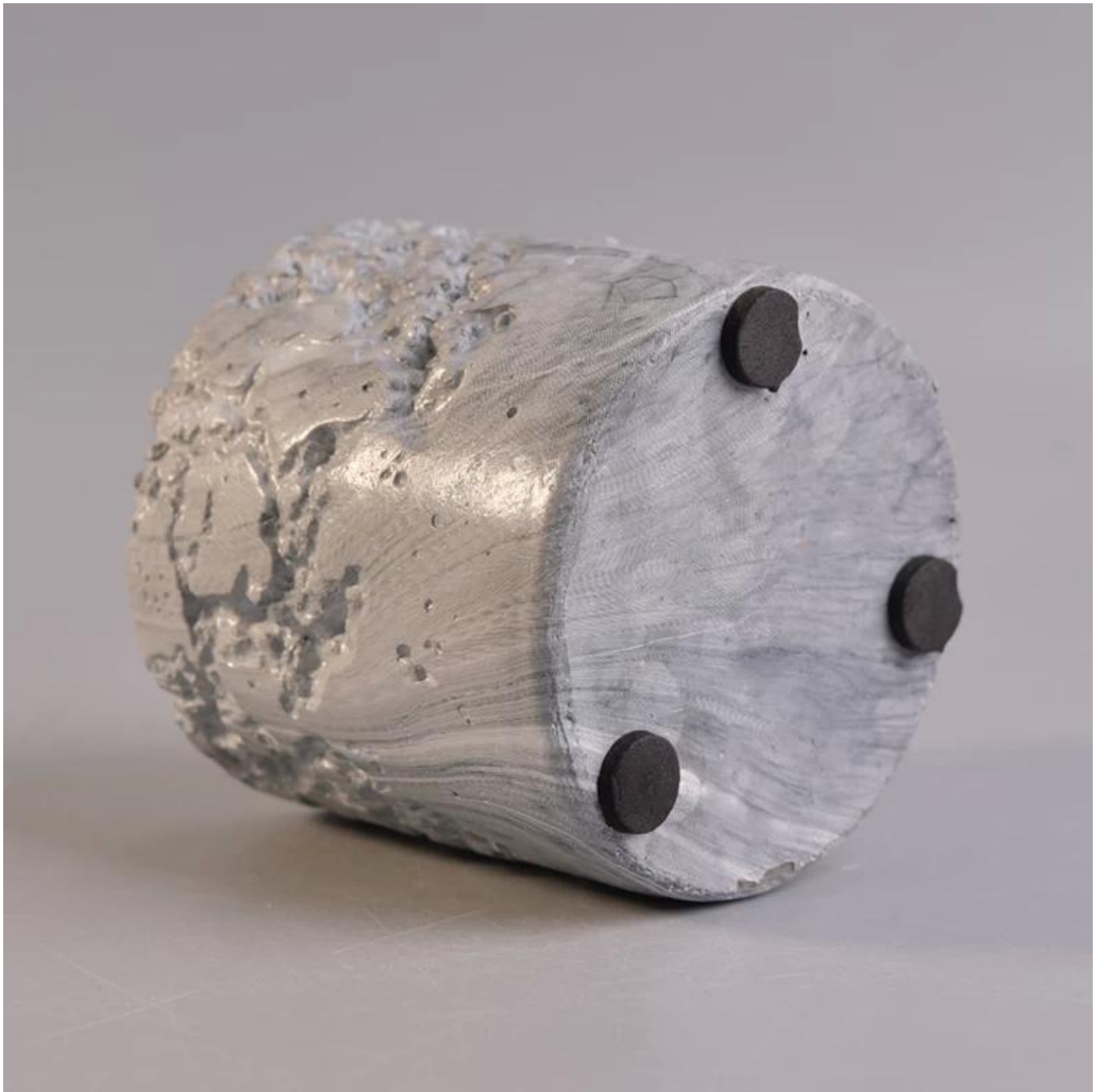
Imveliso yesazisi	SGSYF17041930
Izinto eziphathekayo	Impembelelo yeMarble ikhonkrithi
Imisebenzi yezandla	Isikhongozeli sekhandlela esenziwe ngesandla
Ixesha lokuqinisekisa	1. Iimveliso ezikhoyo, ixesha lesampuli iintsuku ezintlanu 2. Isidingo sokubumba kwakhona, ixesha lesampulu iintsuku ezili-15
Iphakheji	Ukupakishwa ngokubanzi, 48 / Carton
Umthamo	I-500,000 ukuya kwi-1,000,000 / ngenyanga
Ixesha lokuzisa	Iintsuku ezingama-35 emva kokuba isampulu kunye oda isiqinisekiso
Immimiselo yokuhlawula	I-T / T i-30% yentlawulo esezantsi, hlawula imali eseleyo ngenxa yokubona ikopi yomthetho osayilwayo
Ezothutho	Uthutho lwaselwandle, uthutho lomoya, ukuhanjiswa kwehlabathi; iindwendwe zichonge ukuhanjiswa kwemithwalo
Iimpawu Product	1. Isandla esenziwe <a href="#">Isiqulatho sekhandlela</a> 2. Inokusetyenziswa kwihotele, ekhaya, kwibhar, njl 3. Imathiriyeli yendalo esingqongileyo Uvavanyo lwe-FDA, uvavanyo lwe-CA65
Ukuze ukhethhe	1. Yanelisa uyilo kunye nobukhulu obahlukileyo 2. Nawuphi na umbala wepeyinti, iqabaka, i-electroplating, i-laser engraving ingenziwa 3. Bonelela ngokupakisha okukhethekileyo njengokuncipha ifilimu, ibhokisi yesipho sombala, ibhokisi yesipho esimhlophe 4. Sineqela elizinikeleyo lokulawula umgangatho ukulawula umgangatho wemveliso 5. Sineziseko zemveliso yobungcali kunye neendawo zokugcina iimpahla ukuqinisekisa ukuhanjiswa

## More Product Pictures









Similar Products Link



Office & Sample Room



Factory Show



### **Iimpawu zeglasi evuthele inyanga**

1. Uncedo lwayo kubandakanya ubuninzi bokukrola, ubuchwepheshe, iziphumo zomhlaba, umbala njl.
2. Umgangatho unzima kulawulo kunye nokunyamezelana kobungakanani, ubunzima kunye nemilo kukhulu.
3. Ixabiso liphezulu kwaye imveliso inqunyelwe kwiglasi ekhethekileyo ye-technic.

### **Indlela yokwenza isicelo**

1. Ukuyisebenzisa phantsi kwesikhokelo somntu omdala
2. Ukuyihamba ngamanzi acocekileyo okanye abilayo ngaphambi kokusetyenziswa
3. Akukho kuchukumisa umphetho wendebe yeglasi, zama ukuthatha ezantsi okanye isiphatho sayo

### **Izilumkiso**

1. Ibhiya, iwayini ebomvu, iwayini emhlophe, isiselo okanye amanzi ashushu awazali kakhulu  
Ukuthintela ukwenzakalisa isandla sabantwana bakho, nceda usibeke kwindawo abanokufikelela kuyo
3. Kunqande ukuwisa, ukungqubana kunye nefuthe elinamandla
4. Ayifumaneki kwi-oven microwave
5. Ukukuthintela ekuqhekekeni, musa ukuyibeka ngaphezulu komlilo ovulekileyo ngokuthe ngqo

Ukufumana isibambi seglasi esingaphezulu gokanye nayiphi na iiglasi,

Nceda undwendwele iwebhusayithi yethu: <http://www.okcandle.com/>

Okanye apha kunokukunceda wazi ngakumbi ngathi: [FAQ](#)

[Sijonge phambili ekuphenyweni nasekusebenzisaneni kwakho.](#)