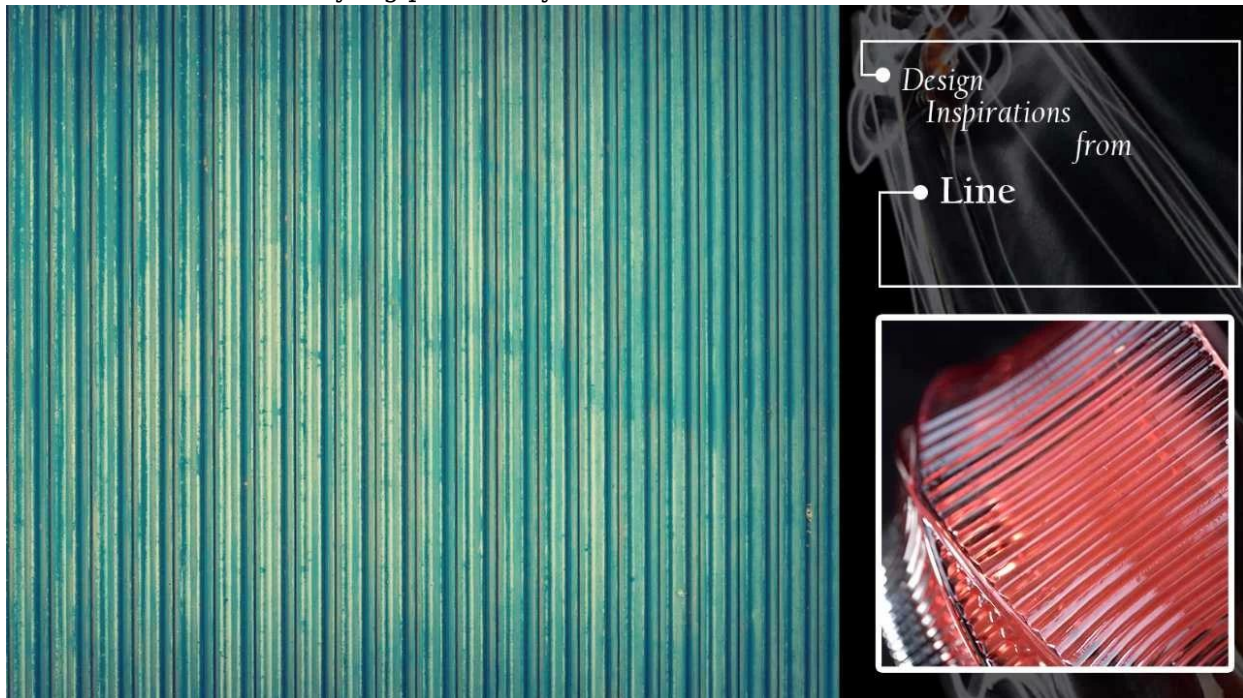


Iibhotile zeglasi zeKhandlela eziThengisa iiKhandlela zeKrisimesi

Uyilo lokuphefumlela

Ukukhuthazwa koyilo lokubonakala kwesi sibambi sekhandlela kuvela **imigca** Imigca ehambayo inika umntu intuthuzelo yengqondo kunye neemvakalelo zefashoni.



Kutheni ukhetha iSunny Designer Holders



Inzuzo ebonakalayo kwimarike

. Gxila kuyilo lobunewunewu

. Umthengisi weempawu ezingama-80% e-USA

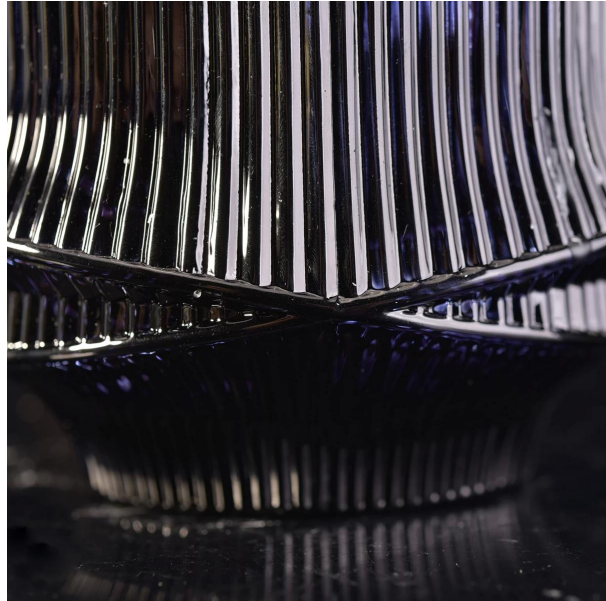
. I-AQL kunye ne-6 eyi-Sunny engqongqo yokuhlola i-QC

. Gcina umgangatho uhambelana nesampulu kunye nenqwaba

iimveliso

Imvakalelo yoyilo loMsitho

- . Ubhle bufunyenwe beeMbasazeTshayina
- . Ufumene iziqholo ezithandekayo kakhulu
- . Abahlobo okanye izipho zobudlelwane kwezoshishino
- . Ukuphumla kunye nobomi bobuRoma



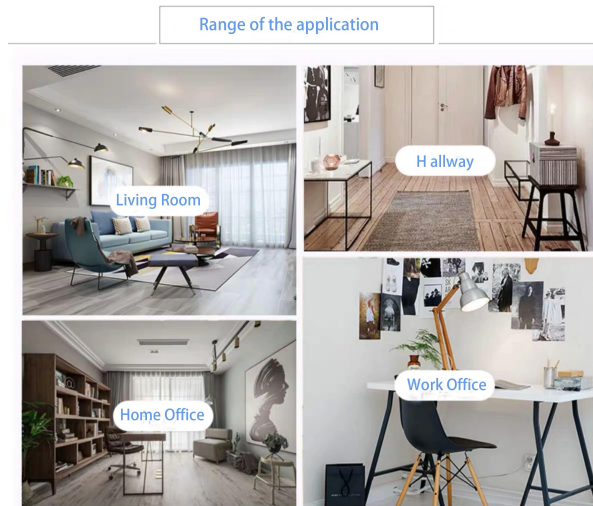
Uyilo lobungakanani beFlexible lukhulisa intengiso yakho ngokukhawuleza

- . **Ubungakanani:** 83 * 102mm
- . **Ezantsi dia:** 55 * 70mm
- . **Ukuphakama:** 98mm
- . **Ubungakanani:** 390ml
- . **Ubunzima:** 565g

Ngenkxaso yethu eyomeleleyo, abathengi bayaphuhlisa kwaye ukusuka kumasifundisane amancinci ukuya kwiinkokheli zeshishini.

Imeko zoBomi

- . Ikofu okanye iBar
- . Ukuhunjiswa ngokugqibeleleyo ekhaya, ehotele okanye egadini
- . Izipho zesithandwa esimnandi
- . Nawuphi na umsitho wokuhombisa



Qwalasela:

Ilanga i-Glassware ifake isicelo selungelo elilodwa lobunikazi kuyilo lwethu, zikhuselwe lilungelo lokushicilela kwaye azivumelekanga ukuba zibonise abanye abathengisi ukuba bacaphule okanye bakope. Okwangoku, inokuba yimveliso yelebheli yakho yabucala kwaye awuzukunikeza abanye wakuba ubeke iodolo echaziweyo.

Ilanga leBrand Brand

Iprofayile yekhampani

[Ilanga leGlasi](#) yasekwa nguFrank noAlice ukusukela ngo-1992, ebonelela ngokudibanisa okugqwesileyo phakathi kwamaxabiso, umgangatho kunye nokuphendula kwimizi-mveliso yeglasi.

Ilanga hlala ubandakanyeka kugcino lweglasi kunye nokuvelisa, kukho imigca yemveliso engaphezulu kwe-10 efumanekayo kwizandla eziqhutywa ngumoya ukuya koomatshini abacinezelayo, umatshini ovuthuzwayo kunye nomatshini we-IS owenziweyo njl. ushicilelo, uphawu lokuprinta, i-electroplate, iqabaka, ukushicilela isikrini, isanti kunye ne-ion plating njl. **I-ISO 9001: 2008/2015 kunye neNgxelo yoThotyelo oluhlaza noLuntu** izatifikethi zakhutshwa yinkampani yomntu wesithathu yokuqinisekisa.



Kukho izinto ezimalunga nama-5 000 ezigubungela zonke izinto zeglasi ezisetyenzisiweyo mihla le kunye nezinto zeceramic, o.k.t. iglasi borosilicate, iibhotile, izivingce, [iziphatho zezibane](#), iingqayi, i-stemware, i-tableware kunye ne-drinkware njl njl. Iimveliso zinokuhlangabezana ne-FDA, LFGB, CA 65, ASTM, uvavanyo lokuhlamba iimpahla.

Ngendlela engqongqo yolawulo kumgangatho wemveliso kunye nenkonzo yabathengi, imarke yethu yokuthumela ngaphandle iye yanda ngokukhawuleza eMntla naseMzantsi Melika, eYurophu, e-Oceania nase-Asiya. Amanqaku ethu eshishini abandakanyeka ikakhulu ekuhombiseni kwasekhaya nakwizithebe. I-Sunny Glassware ithembekile ziinkampani ezaziwayo zehlabathi, ngakumbi kwimakethi yase-USA naseYurophu.

Imbali yoPhuculo

Sunny History

2014-2015 04

- Apr. 2015 ISO 9001:2008 certificate
- Oct. 2014 HK trade show
- Jul. 2014 Expanded office

2008-2011 02

- Jul. 2011 Miami trade show
- Mar 2010 Invested factory in Shanxi
- Feb. 2010 London trade show
- Jun. 2008 Dubai show
Launched team building system

05 2016-2019

- 2016 Involved Ceramic products field
- Turnover reach RMB Fifty Million
- Strategic partnership signed with three high-quality glass factories
- 2017 Fifty patent products
- 2018 Bought & Moved into 1,800 m2 block
Turnover break through one hundred Million
Won IMDA design award
- 2019 Authorized GB/T 29490-2013 Enterprise Intellectual Property Management System Certification

03 2012

- Oct. Founded Sunny business college
- Aug. Las Vegas trade show
- Jul. Participated Charity Concert
- May Joined Shenzhen Network Chamber of Commerce

01 1992-2006

- Jun. 2006 Shanghai trade show
- Oct. 2004 Moved to new office
- Jun. 2002 Shanghai trade show
- Aug. 1992 Founded Sunny Glassware

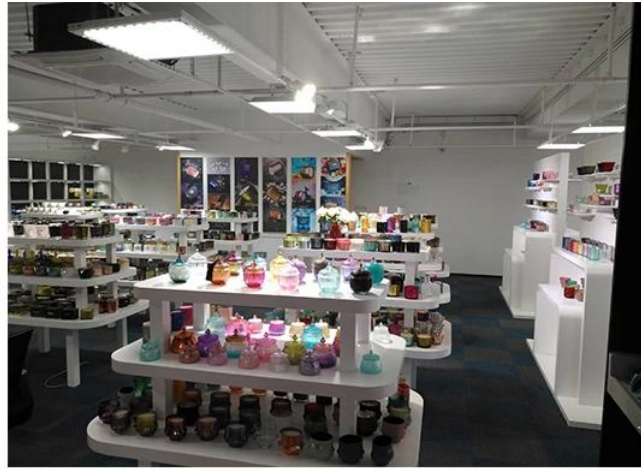
Singobani

KwiGlassware enelanga, kukho iqela elinobuchule kunye nelokwenza imveliso ukwenza ixabiso kubathengi kunye nokugcina ukukhula kwenkampani.



Igumbi lokubonisa

Ilanga leGlassware likhona ngaphezulu kwe-**Izinto ezingama-5,000 kwigumbi lesampulu yaseShenzhen** kukhetho olubanzi. iphumelele enkulu [uvavanyo lwabathengi](#). Wamkelekile kwiofisi yaseShenzhen! Umfanekiso olandelayo ulandelayo **Inxalenye enye kuphela yabanikazi bekhandlela yoyilo lwethu**, Wamkelekile kwiofisi yaseShenzhen ukufumana izinto ozithandayo, kuyakuzisa isimanga esikhulu kuba kunzima ukufumana omnye umthengisi onje e-China.



Isatifikethi esisifumeneneyo



I-ASTM



IOS9001-2015



Ukuthobela okuluhlaza kunye neNtlobo Ingxelo yePolisi

Ubugcisa bethu kwi-Intanethi

Nantsi eyona mifanekiso yobugcisa kwi-Intanethi, ulwazi ngakumbi ngomzi-mveliso, ii-pls jonga: [Uhambo lweFektri](#)



☐ IS Machine



☐ Machine Blown



☐ Machine Pressed



☐ Hand-Made



liVideos ezingakumbi

Iimpawu zokubamba amakhandlela eglasi kumatshini

Umatshini oCinezelekileyo oCwangcisiweyo oSebenzayo usetyenziselwa ukwenza abanini bekhandlela abadibana nezi zinto zilandelayo: Ububanzi obuphezulu bungaphantsi kunaphantsi

- . Imveliso Mass kunye MOQ eliphezulu
- . Iphethini ebunjiweyo kudonga lwangaphandle
- . Ubungakanani beMax-Min: 1.5 ~ 10mm
- . Ezantsi ukutyeba: 4 ~ 30mm
- . Ixabiso eliphantsi Iphethini entle kudonga lwangaphandle.

Indlela yokwenza isicelo

1. Ukuyisebenzisa phantsi kwesikhokelo somntu omdala
2. Ukuyihlamba ngamanzi acocekileyo okanye abilayo ngaphambi kokusetyenziswa
3. Akukho kuchukumisa umphetho wendebe yeglasi, zama ukuthatha ezantsi okanye isiphatho sayo

Izilumkiso

1. Ibhiya, iwayini ebomvu, iwayini emhlophe, isiselo okanye amanzi ashushu awazali kakhulu
Ukuthintela ukwenzakalisa isandla sabantwana bakho, nceda usibeke kwindawo abanokufikelela kuyo
3. Kungqande ukuwisa, ukungqubana kunye nefuthe elinamandla
4. Ayifumaneki kwi-oven microwave
5. Ukukuthintela ekuqhekekeni, musa ukuyibeka ngaphezulu komlilo ovulekileyo ngokuthe ngqo

Ngakumbi **isiphatho sekhandlela** okanye nayiphi na iiglas, Nceda undwendwele iwebhusayithi yethu: <http://www.okcandle.com/> Okanye apha kunokukunceda wazi ngakumbi malunga nathi: **FAQ**