

Umhombiso wegolide yodongwe ongasentla ophethe ikhandlela

Product Details

Umhombiso wegolide owenziwe ngeekerale kungca wokugcina ikhandlela

Igama lomxholo	
Into No.	SGXYT18112801
Ubungakanani	Idia ephezulu: 87mm Ezantsi dia: 48mm Ukuphakama: 96mm Ubunzima: 314g Ubungakanani: 402ml
Umthamo	10oz 14oz 16oz njl iyafumaneka
Ixesha lesampula	Iintsuku eziyi-1.5 ukuba ikho imilo kunye nobungakanani beemveliso Iintsuku 2.15 ukuba kufuneka imilo entsha kunye nobukhulu iimveliso
Ukupakisha	Ukupakisha okuqhelekileyo kokhuseleko i-24pcs / i-36pcs / i-48pcs njl.njl
MOQ	3000
Ixesha lokuzisa	Kwiintsuku ezingama-35 emva kokuba iqinisekisiwe
Immimiselo yokuhlawula	I-30% idiphozithi ngo-T / T kwangaphambili, ibhalansi emva kokubonisa ikopi ye-B / L.
Inqaku lemveliso	Umgangatho ophezulu kunye namaxabiso okhuphiswano 2.Meet FDA, SGS, LFGB njl uvavanyo 3.Eco-friendly I-4 isebenza ngokubanzi kuMtshato, iqela, ikhaya, ibha njl. 5.Umatshini wenziwe

More Product Pictures



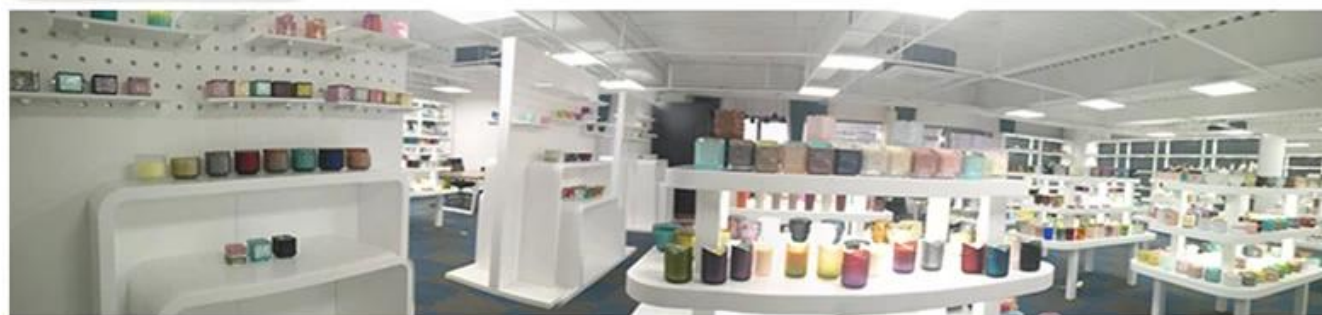






Office & Sample Room





Factory Show





Iimpawu zeglasi evuthele inyanga

1. Uncedo lwayo kubandakanya ubuninzi bokukrola, ubuchwepheshe, iziphumo zomhlaba, umbala njl.
2. Umgangatho unzima kulawulo kunye nokunyamezelana kobungakanani, ubunzima kunye nemilo kukhulu.
3. Ixabiso liphezulu kwaye imveliso inqunyelwe kwiglasi ekhethekileyo ye-technic.

Indlela yokwenza isicelo

1. Ukuyisebenzisa phantsi kwesikhokelo somntu omdala
2. Ukuyihamba ngamanzi acocekileyo okanye abilayo ngaphambi kokusetyenziswa
3. Akukho kuchukumisa umphetho wendebe yeglasi, zama ukuthatha ezantsi okanye isiphatho sayo

Izilumkiso

1. Ibhiya, iwayini ebomvu, iwayini emhlophe, isiselo okanye amanzi ashushu awazali kakhulu
Ukuthintela ukwenzakalisa isandla sabantwana bakho, nceda usibeke kwindawo abanokufikelela kuyo
3. Kunqande ukuwisa, ukungqubana kunye nefuthe elinamandla
4. Ayifumaneki kwi-oven microwave
5. Ukukuthintela ekuqhekekeni, musa ukuyibeka ngaphezulu komlilo ovulekileyo ngokuthe ngqo

Ngakumbi [isiphatho sekhandlela](#) okanye nayiphi na iiglasi,

Nceda undwendwele iwebhusayithi yethu: <http://www.okcandle.com/>

Okanye apha kunokukunceda wazi ngakumbi malunga nathi: **FAQ**

[Sijonge phambili ekuphenyweni nasekusebenzisaneni kwakho.](#)

[Lasekhaya umva](#)