

Umbala ongwevu ophethe ikhandlela elibambe uphawu lwakho

Product Details

Igama lento	Isiphatho sekhandlela esenziwe ngeCeramic
Inombolo yento.	SGYC19012234
Yinqumle	Idia ephezulu: 95mm Ezantsi dia: 100mm Ukuphakama: 89mm Ubunzima: 300g Ubungakanani: 500ml Olunye ubukhulu: ii-ounces ezi-5 / ii-ounces eziyi-8 / ii-ounces ezili-10 / ii-ounces eziyi-16 izimbiza zekhandlela ziyafumaneka
Umthamo	Abaphathi bekhandlela be-10oz 14oz 16oz njl
Ixesha lesampulu	Iintsuku eziyi-1.5 ukuba ubume kunye nobungakanani beemveliso zikhona Iintsuku ezingama-2.15 ukuba ufuna imilo entsha kunye nobungakanani beemveliso
Ukupakisha	24pcs / 36pcs / 48pcs ivale rhoqo ukhuseleko njalo njalo Ukuze kumazwe ibhokisi kunye ukwahlula iqanda
MOQ	3000
Ixesha lokuzisa	Kwiintsuku ezingama-35 emva kokuba i-odolo iqinisekisiwe
Immimiselo yokuhlawula	I-30% idiphozithi ngo-T / T kwangaphambili, ibhalansi emva kokubonisa ikopi ye-B / L.
Iimpawu Product	<ol style="list-style-type: none">1. Umgangatho ophezulu kunye namaxabiso okhuphiswano2. Ukuvavanya i-ASTM3. Eco Friendly4. Ijolise ngokubanzi kuMtshato, itheko, ikhaya, imivalo njl.5. Izikhongozeli zekhandlela zeceramic enendlela yokuhombisa yokuhambisa

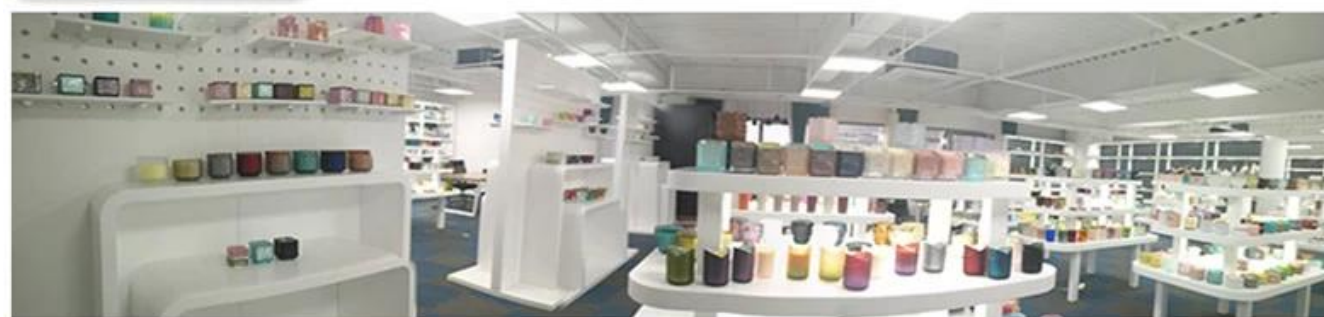
More Product Pictures






Office & Sample Room





Factory Show

* Production Process



▶ Sculpture



▶ Make Moulds



▶ Inject Clay



▶ Shape forming



▶ Roller Forming



▶ Body Finishing



▶ First Firing



▶ Hand Painting



▶ Decaling



▶ Glazing



▶ Decor Firing



▶ Packing



▶ Warehouse



▶ Loading



▶ Shipping



Decoration firing



After decal



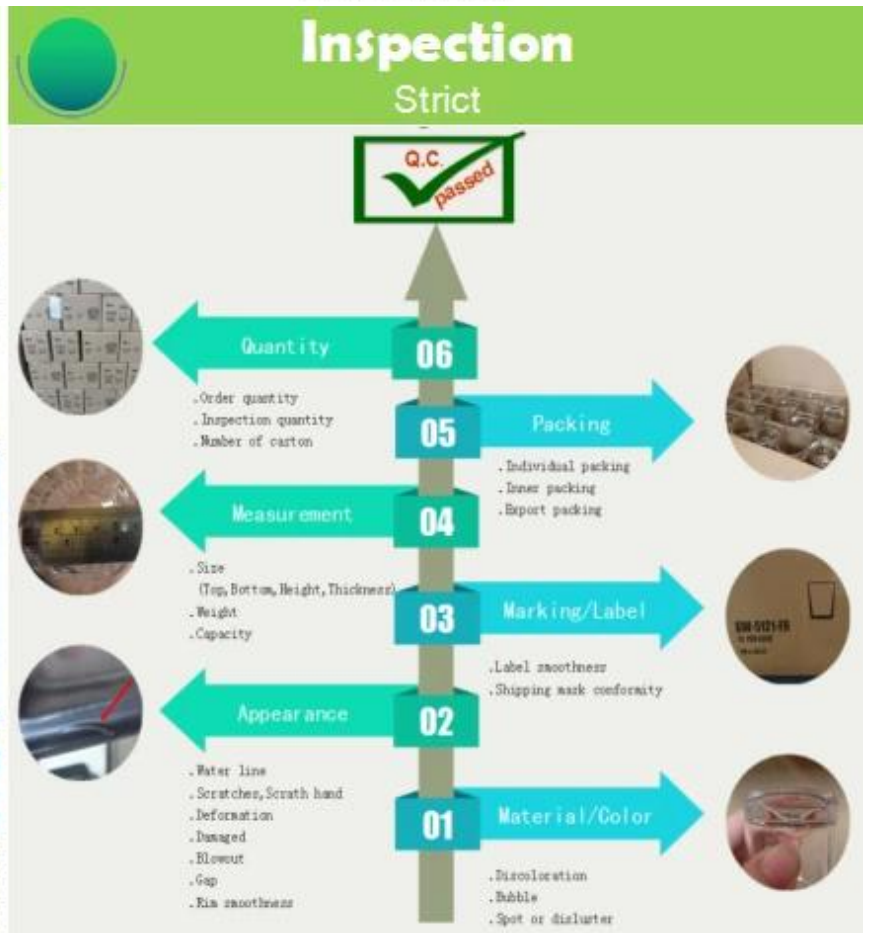
Inspection the decal product



Packing



Ready to loading



limpawu zeglasi evuthelweyo ngenyanga

1. Uncedo lwayo kubandakanya ukrolwa kobuninzi, ubuchule, iziphumo zomhlaba, umbala njl.
2. Umgangatho itshekhi enzima kunye nokunyamezelana kobukhulu, ubunzima kunye nemilo kukhulu.
3. Ixabiso liphezulu kwaye imveliso inqunyelwe kwiglasi ekhethekileyo yobugcisa.

Indlela yesicelo

1. Ukuyisebenzisa phantsi kokhokelo lomntu omdala
2. Yihlambe ngamanzi acocekileyo okanye ashushu ngaphambi kokuba uyisebenzise
3. Musa ukubamba umphetho wendebe yeglasi, zama ukuthatha ezantsi okanye isiphatho sayo

Ukulumkela

1. Ibhiya, iwayini ebomvu, iwayini emhlophe, isiselo okanye amanzi ashushu akufuneki agcwale kakhulu
2. Ukuthintela ukwenzakalisa isandla sabantwana bakho, nceda ubabeke apho bangenakufikelela khona
3. Kuphephe ukuwa, ukungqubana kunye nefuthe elinamandla
4. Ayifumaneki kwi-oven microwave
5. Ukuyinqanda ukuba ingaphuli, musa ukuyibeka ngqo emlilweni

Ngakumbi [isiphatho sekhandlela](#) okanye nayiphi na iglasi,

Nceda undwendwele iwebhusayithi yethu: <http://www.okcandle.com/>

Okanye apha inokukunceda wazi ngcono kunathi: **FAQ**

[Silindele isicelo kunye nentsebenziswano.](#)