

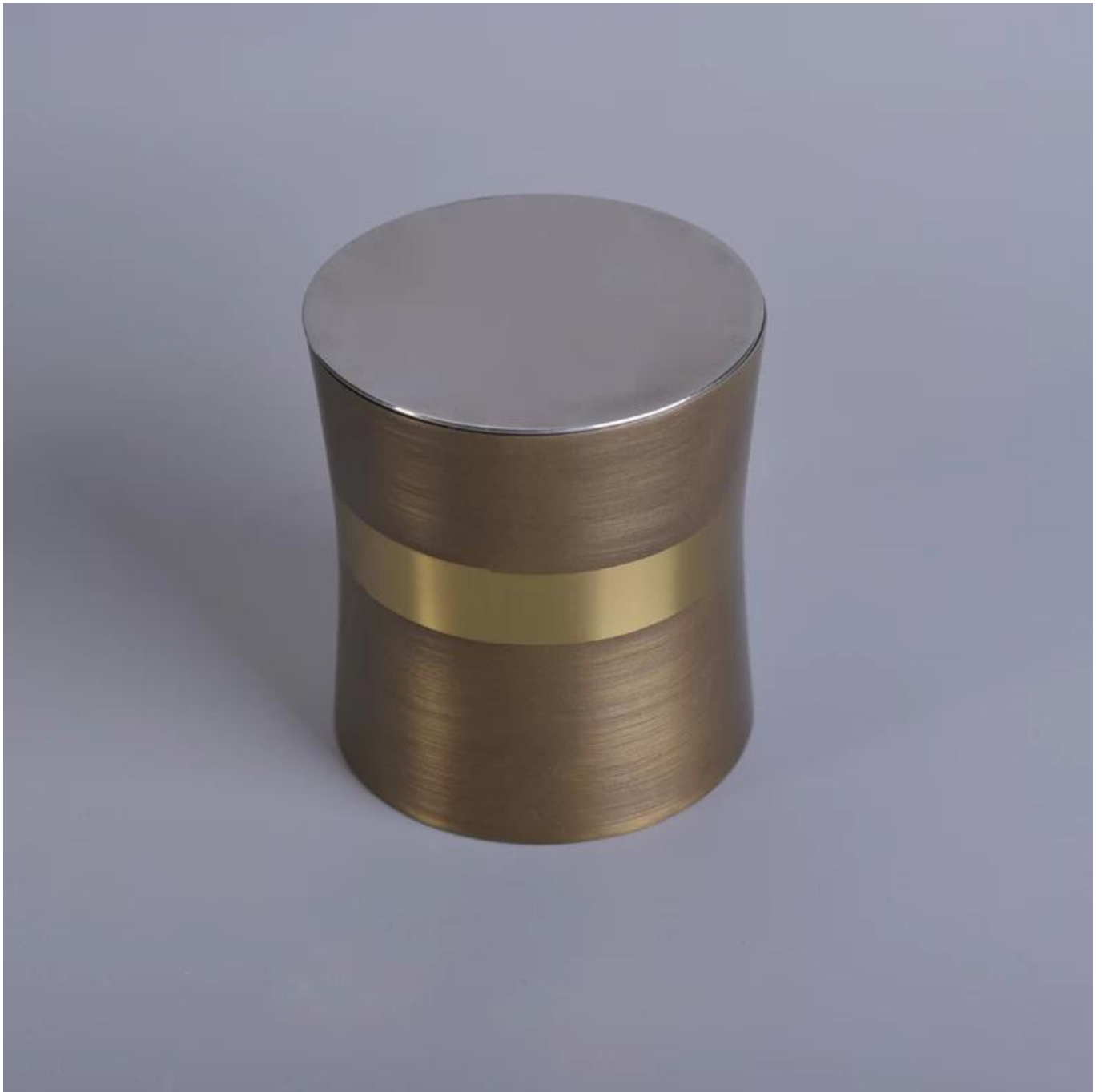
Umgangatho ophezulu wobhedu wesingxobo sevumba lengqayi ye-stainless steel candle

Product Details

Igama lomxholo	Umgangatho ophezulu wobhedu wesingxobo sevumba lengqayi ye-stainless steel candle
Into No.	SGYB17031306
Ubungakanani	Idia ephezulu: 81mm Ezantsi dia: 83mm Ukuphakama: 90mm Ubunzima: 159g Ubungakanani: 383ml Iziciko Isazisi: 82mm Ukuphakama: 7mm Ubunzima: 75g
Igama lebrand	Ilanga leGlasi
Ixesha lesampula	Iintsuku eziyi-1.5 zokuba kubume kunye nobungakanani beemveliso 2:15 iintsuku ukuba ufuna imilo entsha kunye nobungakanani iimveliso
Ukupakisha	Ukupakishwa koKhuseleko okuqhelekileyo ii-24pcs / 36pcs / 48pcs kwibhokisi nganye njl
Umq	5,000pcs
Ixesha lokuzisa	Kwiintsuku ezingama-35 emva kokuba iqinisekisiwe
Immimiselo yokuhlawula	I-30% idiphozithi ngo-T / T kwangaphambili, ibhalansi emva kokubonisa ikopi ye-B / L.
Imveliso	Umgangatho 1.High kunye namaxabiso kukhuphiswano 2.Meet FDA, SGS, LFGB uvavanyo njl 3.Eco-friendly I-4 isebenza ngokubanzi kumtshato, iqela, indlu, ibha njl. 5.Umatshini wenziwe

More Product Pictures









Office & Sample Room



Factory Show



Iimpawu zeglasi evuthele inyanga

1. Uncedo lwayo kubandakanya ubuninzi bokukrola, ubuchwepheshe, iziphumo zomhlaba, umbala njl.
2. Umgangatho unzima kulawulo kunye nokunyamezelana kobungakanani, ubunzima kunye nemilo kukhulu.
3. Ixabiso liphezulu kwaye imveliso inqunyelwe kwiglasi ekhethekileyo ye-technic.

Indlela yokwenza isicelo

1. Ukuyisebenzisa phantsi kwesikhokelo somntu omdala
2. Ukuyihamba ngamanzi acocekileyo okanye abilayo ngaphambi kokusetyenziswa
3. Akukho kuchukumisa umphetho wendebe yeglasi, zama ukuthatha ezantsi okanye isiphatho sayo

Izilumkiso

1. Ibhiya, iwayini ebomvu, iwayini emhlophe, isiselo okanye amanzi ashushu awazali kakhulu
2. Ukuphepha ukwenzakalisa isandla sabantwana bakho, nceda usibeke kwindawo abanokufikelela kuyo
3. Kunqande ukuwisa, ukungqubana kunye nefuthe elinamandla
4. Ayifumaneki kwi-oven microwave
5. Ukukuthintela ekuqhekekeni, musa ukuyibeka ngaphezulu komlilo ovulekileyo ngokuthe ngqo

Ngakumbi [isiphatho sekhandlela](#) okanye nayiphi na iiglasi,

Nceda undwendwele iwebhusayithi yethu: <http://www.okcandle.com/>

Okanye apha kunokukunceda wazi ngakumbi ngathi: [FAQ](#)

[Sijonge phambili ekuphenyweni nasekusebenzisaneni kwakho.](#)

[Lasekhaya umva](#)