

## Umgangatho ophezulu wokuyilwa kwekhandlela le-ceramic ibhere emhlophe imilo yodongwe yesikhongozelo ekhaya

### Product Details

Igama lento	<b>Umgangatho ophezulu wokuyilwa kwekhandlela le-ceramic ibhere emhlophe imilo yodongwe yesikhongozelo ekhaya</b>
Inombolo yento.	SGGH19011623
Yinqumle	Idia ephezulu: 80mm Ezantsi dia: 98mm Ubukhulu: 108mm Ukuphakama: 135mm Ubunzima: 288g Ubungakanani: 560ml Olunye ubungakanani: ii-ounces ezi-5 / ii-ounces eziyi-8 / ii-ounces ezili-10 / ii-ounces eziyi-16 nazo ziyafumaneka
Umthamo	10oz 14oz 16oz njl. Iyafumaneka
Ixesha lesampulu	Iintsuku eziyi-1.5 ukuba ubume kunye nobungakanani beemveliso zikhona Iintsuku ezingama-2.15 ukuba ufuna imilo entsha kunye nobungakanani beemveliso
Ukupakisha	24pcs / 36pcs / 48pcs ivale rhoqo ukhuseleko njalo njalo Ukuze kumazwe ibhokisi kunye ukwahlula amaqanda
MOQ	5000
Ixesha lokuzisa	Kwiintsuku ezingama-35 emva kokuba i-odolo iqinisekisiwe
Immimiselo yokuhlawula	I-30% idiphozithi ngo-T / T kwangaphambili, ibhalansi emva kokubonisa ikopi ye-B / L.
Iimpawu Product	<ol style="list-style-type: none"><li>1. Umgangatho ophezulu kunye namaxabiso okhuphiswano</li><li>2. Ukuvavanya i-FDA, i-SGS, i-LFGB njl.</li><li>3. Eco Friendly</li><li>4. Ijolise ngokubanzi kuMtshato, itheko, ikhaya, imivalo njl.</li><li>5. Zenziwe ngezandla</li></ol>

### More Product Pictures









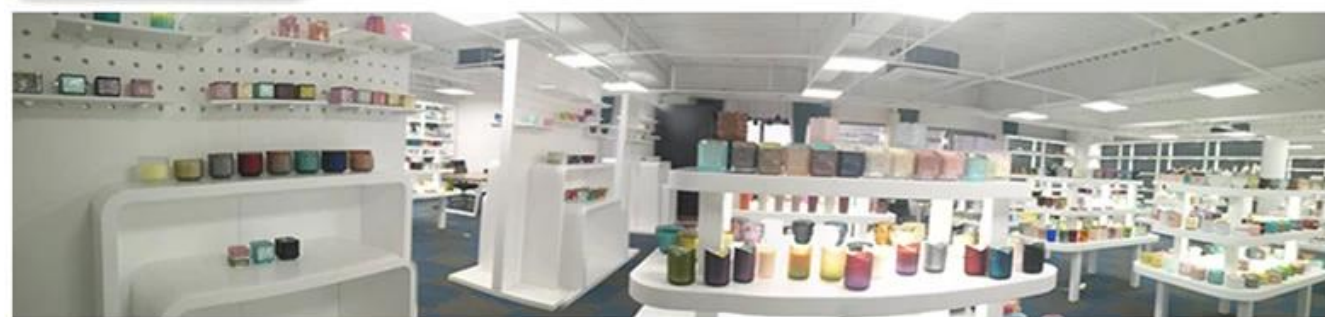




Office & Sample Room







## Factory Show





### **Iimpawu zeglasi evuthelweyo ngenyanga**

1. Uncedo lwayo kubandakanya ukrolwa kobuninzi, ubuchule, iziphumo zomhlaba, umbala njl.
2. Umgangatho itshekhi enzima kunye nokunyamezelana kobukhulu, ubunzima kunye nemilo kukhulu.
3. Ixabiso liphezulu kwaye imveliso inqunyelwe kwiglasi ekhethekileyo yobugcisa.

### **Indlela yesicelo**

1. Ukuyisebenzisa phantsi kokhokelo lomntu omdala
2. Yihlambe ngamanzi acocekileyo okanye ashushu ngaphambi kokuba uyisebenzise
3. Musa ukubamba umphetho wendebe yeglasi, zama ukuthatha ezantsi okanye isiphatho sayo

### **Ukulumkela**

1. Ibhiya, iwayini ebomvu, iwayini emhlophe, isiselo okanye amanzi ashushu akufuneki agcware kakhulu
2. Ukuthintela ukwenzakalisa isandla sabantwana bakho, nceda ubabeke apho bangenakufikelela khona
3. Kuphephe ukuwa, ukungqubana kunye nefuthe elinamandla
4. Ayifumaneki kwi-oven microwave
5. Ukuyinqanda ukuba ingaphuli, musa ukuyibeka ngqo emlilweni

Ngakumbi [isiphatho sekhandlela](#) okanye nayiphi na iglasi,

Nceda undwendwele iwebhusayithi yethu: <http://www.okcandle.com/>

Okanye apha inokukunceda wazi ngcono kunathi: **FAQ**

[Siliindele isicelo kunye nentsebenziswano.](#)

## **[Lasekhaya umva](#)**