

ikhandlela elinobunewunewu beglasi elinekhuselelo elinenxalenye yomtshato

Product Details

I-I-I-SGHY16030301CCL

Igama lento	<u>ikhandlela elinobunewunewu beglasi elinekhuselelo elinenxalenye yomtshato</u>
Inombolo yento.	SGHY16030301CCL
Yinqumle	into: SGHY16030301CCLSGHY16030301CCL Idia ephezulu: 105mm Ezantsi dia: 105mm Ukuphakama: 100mm Isixhobo: iglasi emhlophe ephezulu Imveliso: Umatshini wenziwe Ixesha isampulu: 5 ~ 7 iintsuku emva kokuba isiqinisekiso Olunye ubungakanani: ii-ounces ezi-5 / ii-ounces eziyi-8 / ii-ounces ezili-10 / ii-ounces eziyi-16 nazo ziyafumaneka
Umthamo	10oz 14oz 16oz njl. Iyafumaneka
Ixesha lesampulu	Iintsuku eziyi-1.5 ukuba ubume kunye nobungakanani beemveliso zikhona Iintsuku ezingama-2.15 ukuba ufuna imilo entsha kunye nobungakanani beemveliso
Ukupakisha	24pcs / 36pcs / 48pcs ivale rhoqo ukhuseleko njalo njalo Ukuze kumazwe ibhokisi kunye ukwahlula iqanda
MOQ	5000pcs
Ixesha lokuzisa	Kwiintsuku ezingama-35 emva kokuba i-odolo iqinisekisiwe
Immimiselo yokuhlawula	I-30% idiphozithi ngo-T / T kwangaphambili, ibhalansi emva kokubonisa ikopi ye-B / L.
Iimpawu Product	<ol style="list-style-type: none">1. Umgangatho ophezulu kunye namaxabiso okhuphiswano2. Ukuvavanya i-FDA, i-SGS, i-LFGB njl.3. Eco Friendly4. Ijolise ngokubanzi kuMtshato, itheko, ikhaya, imivalo njl.5. Umatshini wenziwe

More Product Pictures

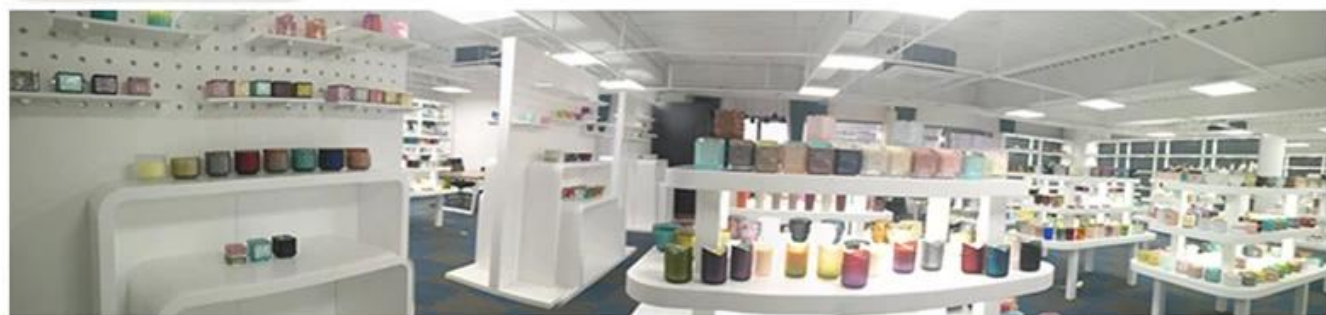






Office & Sample Room





Factory Show

01

Factory



Surface Treatment

10+ production lines



□ Spraying



□ Engraving



□ Electroplating



□ Silk-screen



- Spraying
- Engraving
- Electroplating
- Silk-Screen



Iimpawu zeglasi evuthelweyo ngenyanga

1. Uncedo lwayo kubandakanya ukrolwa kobuninzi, ubuchule, iziphumo zomhlaba, umbala njl.
2. Umgangatho itshekhi enzima kunye nokunyamezelana kobukhulu, ubunzima kunye nemilo kukhulu.
3. Ixabiso liphezulu kwaye imveliso inqunyelwe kwiglasi ekhethekileyo yobugcisa.

Indlela yesicelo

1. Ukuyisebenzisa phantsi kokhokelo lomntu omdala
2. Yihlambe ngamanzi acocekileyo okanye ashushu ngaphambi kokuba uyisebenzise
3. Musa ukubamba umphetho wendebe yeglasi, zama ukuthatha ezantsi okanye isiphatho sayo

Ukulumkela

1. Ibhiya, iwayini ebomvu, iwayini emhlophe, isiselo okanye amanzi ashushu akufuneki agcware kakhulu
2. Ukuthintela ukwenzakalisa isandla sabantwana bakho, nceda ubabeke apho banganakufikelela khona
3. Kuphephe ukuwa, ukungqubana kunye nefuthe elinamandla
4. Ayifumaneki kwi-oven microwave
5. Ukuyinqanda ukuba ingaphuli, musa ukuyibeka ngqo emlilweni

Ngakumbi [isiphatho sekhandlela](#) okanye nayiphi na iglasi,

Nceda undwendwele iwebhusayithi yethu: <http://www.okcandle.com/>

Okanye apha inokukunceda wazi ngcono kunathi: **FAQ**

[Silinelele isicelo kunye nentsebenziswano.](#)

[Lasekhaya umva](#)