

# Round ezimhlophe Ceramic Candle ezityeni kunye nemilo intliziyo Isiciko ngenxa Soy Candle

## Product Details

Igama lento	Imijikelezo emhlophe ejikelezayo emhlophe yodongwe eneLid rim Lid yeSandle Candle
	Ingqayi Idia ephezulu: 79mm Ezantsi dia: 74mm Ukuphakama: 89mm  Lid Idia ephezulu: 75mm Ezantsi dia: 79mm Ukuphakama: 21mm  Ukuphakama okupheleleyo: 110mm Ubunzima bebonke: 292g
Umthamo	10oz 14oz 16oz njl. Iyafumaneka
Ixesha lesampulu	Iintsuku eziyi-1.5 ukuba ubume kunye nobungakanani beemveliso zikhona Iintsuku 2.15 ukuba ufuna imilo entsha kunye nobungakanani iimveliso
Iphakheji	I-24pcs / 36pcs / 48pcs yokupakisha rhoqo ukhuseleko njl njl
MOQ	5000
Ixesha lokuzisa	Kwiintsuku ezingama-35 emva komyalelo oqinisekisiweyo
Immimiselo yokuhlawula	I-30% idiphozithi ngo-T / T kwangaphambili, ibhalansi emva kokubonisa ikopi ye-B / L.
Iimpawu Product	<ol style="list-style-type: none"><li>1. Umgangatho ophezulu kunye namaxabiso okhuphiswano</li><li>2. Uvavanyo lwe-FDA, SGS, LFGB njl.</li><li>3. Eco ubuhlobo</li><li>4. Ijolise ikakhulu kwimithshato, amaqela, amakhaya, imivalo, njl.</li><li>5. umatshini wenziwe</li></ol>

## More Product Pictures



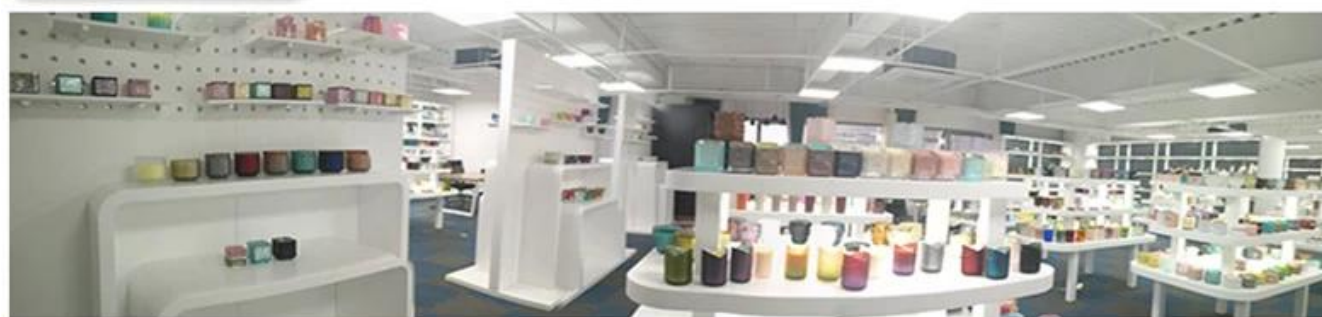






Office & Sample Room





Factory Show

01

## Factory



## Surface Treatment

10+ production lines



□ Spraying



□ Engraving



□ Electroplating



□ Silk-screen



- Spraying
- Engraving
- Electroplating
- Silk-Screen





### **Iimpawu zeglasi evuthelweyo ngenyanga**

1. Uncedo lwayo kubandakanya ubuninzi bokukrola, ubuchule, iziphumo zomhlaba, umbala njl.
2. Umgangatho ulawulo olunzima kunye nokunyamezelana kwemilinganiselo, ubunzima kunye nemilo kukhulu.
3. Ixabiso liphezulu kwaye imveliso inqunyelwe kwiglasi ekhethekileyo yobugcisa.

### **Indlela yesicelo**

1. Ukuyisebenzisa phantsi kokhokelo lomntu omdala
2. Yihlambe ngamanzi acocekileyo okanye ashushu ngaphambi kokuba uyisebenzise
3. Musa ukubamba umphetho wendebe yeglasi, zama ukuthatha ezantsi okanye isiphatho sayo

### **Ukulumkela**

1. Ibhiya, iwayini ebomvu, iwayini emhlophe, isiselo okanye amanzi ashushu akufuneki agcwale kakhulu  
Ukuphepha ukwenzakalisa izandla zabantwana bakho, nceda ubabeke apho bangenakufikelela khona
3. Kuphephe ukuwa, ukungqubana kunye neempembelelo ezinamandla
4. Ayifumaneki kwi-oven microwave
5. Ukuphepha ukwaphula, musa ukuyibeka ngqo emlilweni

Ngakumbi [isiphatho sekhandlela](#) okanye nayiphi na iglasi,

Nceda undwendwele iwebhusayithi yethu: <http://www.okcandle.com/>

Okanye apha kunokukunceda wazi ngcono kunathi: **FAQ**

[Siliindele isicelo kunye nentsebenziswano.](#)