

Umphumo wekhephu iingqayi zekhandlela ezipinki zeceramic

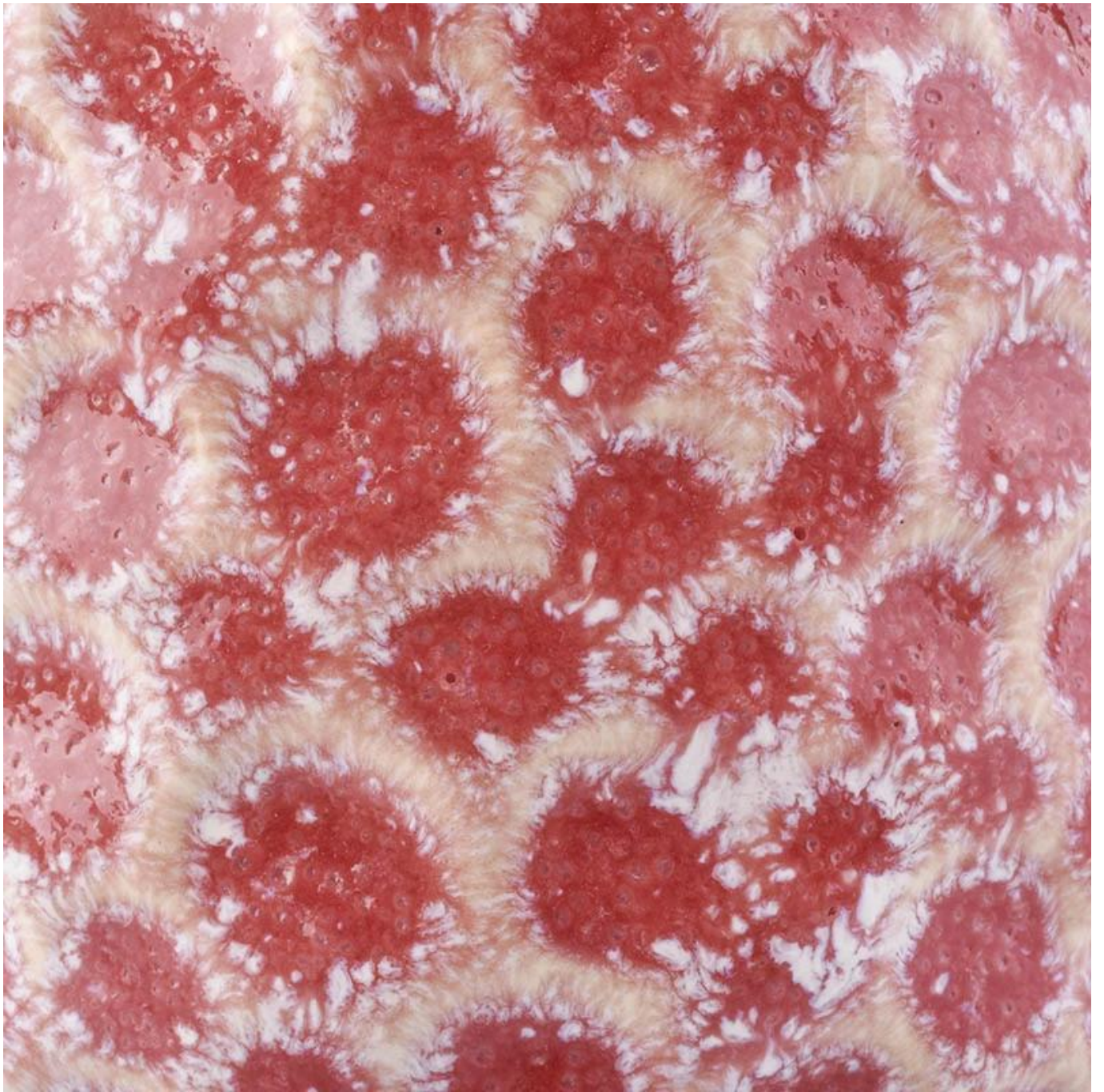
Product Details

Igama lento	Umphumo wekhephu iingqayi zekhandlela ezipinki zeceramic
Inombolo yento	SGJW190129019
Yinqumle	<p>Inombolo yengaku: SGJW190129019 Idia ephezulu: 72mm Ezantsi dia: 82mm Ukuphakama: 80mm Ubunzima: 250g Ubungakanani: 230ml</p> <p>Olunye ubungakanani: ii-ounces ezi-5 / ii-ounces eziyi-8 / ii-ounces ezili-10 / ii-ounces eziyi-16 nazo ziyafumaneka</p>
Umthamo	10oz 14oz 16oz njl. Iyafumaneka
Ixesha lesampulu	lintsuku eziyi-1.5 ukuba ubume kunye nobungakanani beemveliso zikhona lintsuku ezingama-2.15 ukuba ufuna imilo entsha kunye nobungakanani beemveliso
iphakheji	24pcs / 36pcs / 48pcs ukhuseleko ukupakisha rhoqo njalo njalo. Ukuthumela ngaphandle ibhokisi enokwahlulahlula iqanda
MOQ	3000
Ixesha lokuzisa	Kwiintsuku ezingama-35 emva kokuba i-odolo iqinisekisiwe
Immimiselo yokuhlawula	I-30% idiphozithi ngo-T / T kwangaphambili, ibhalansi emva kokubonisa ikopi ye-B / L.
Iimpawu Product	<ol style="list-style-type: none">1. Umgangatho ophezulu kunye namaxabiso okhuphiswano2. Uvavanyo lwe-FDA, SGS, LFGB njl.3. Eco ubuhlobo4. Ijolise ngokubanzi kwimitshato, amaqela, ikhaya, imivalo, njl.5. umatshini wenziwe

More Product Pictures

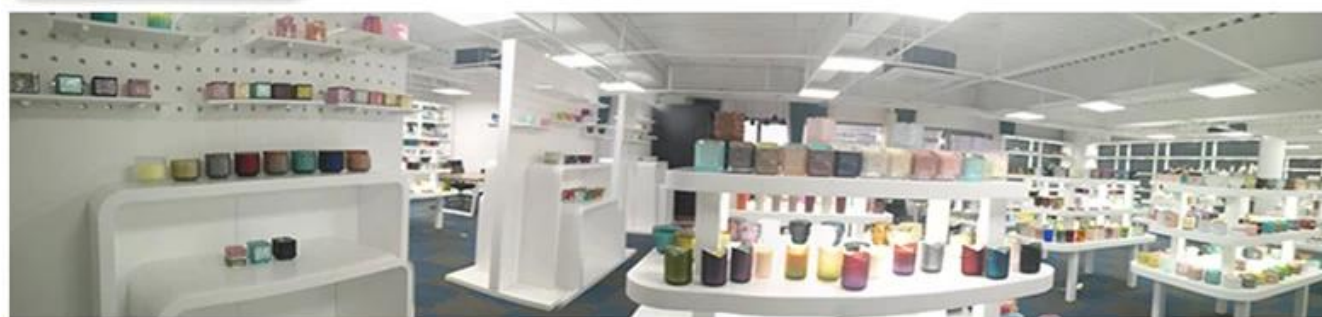












Factory Show





Iimpawu zeglasi evuthelweyo ngenyanga

1. Uncedo lwayo kubandakanya ukrolwa kobuninzi, ubuchule, iziphumo zomhlaba, umbala njl.
2. Umgangatho itshekhi enzima kunye nokunyamezelana kobukhulu, ubunzima kunye nemilo kukhulu.
3. Ixabiso liphezulu kwaye imveliso inqunyelwe kwiglasi ekhethekileyo yobugcisa.

Indlela yesicelo

1. Ukuyisebenzisa phantsi kokhokelo lomntu omdala
2. Yihlambe ngamanzi acocekileyo okanye ashushu ngaphambi kokuba uyisebenzise
3. Musa ukubamba umphetho wendebe yeglasi, zama ukuthatha ezantsi okanye isiphatho sayo

Ukulumkela

1. Ibhiya, iwayini ebomvu, iwayini emhlophe, isiselo okanye amanzi ashushu akufuneki agcwale kakhulu
2. Ukuthintela ukwenzakalisa isandla sabantwana bakho, nceda ubabeke apho bangenakufikelela khona
3. Kuphephe ukuwa, ukungqubana kunye neempembelelo ezinamandla
4. Ayifumaneki kwi-oven microwave
5. Ukuyinqanda ukuba ingaphuli, musa ukuyibeka ngqo emlilweni

Ngakumbi [isiphatho sekhandlela](#) okanye nayiphi na iglasi,

Nceda undwendwele iwebhusayithi yethu: <http://www.okcandle.com/>

Okanye apha inokukunceda wazi ngcono kunathi: **FAQ**

[Silinele isicelo kunye nentsebenziswano.](#)

[Lasekhaya umva](#)