

ukuhanjiswa kweglass ye-ceramic abanini beekhandlela zeekhandlela

Product Details

Igama lento	ukuhanjiswa kweglass ye-ceramic abanini beekhandlela zeekhandlela
Inombolo yento.	SGJW190129003
Yinqumle	Idia ephezulu: 90mm Ezantsi dia: 90mm Ukuphakama: 90mm Ubunzima: 329g Ubungakanani: 350ml Olunye ubukhulu: ii-ounces ezi-5 / ii-ounces eziyi-8 / ii-ounces ezili-10 / ii-ounces eziyi-16 izimbiza zamakhandlela ziyafumaneka
Umthamo	Abaphathi bekhandlela be-10oz 14oz 16oz njl
Ixesha lesampulu	lintsuku eziyi-1.5 ukuba ubume kunye nobungakanani beemveliso zikhona lintsuku ezingama-2.15 ukuba ufuna imilo entsha kunye nobungakanani beemveliso
Ukupakisha	24pcs / 36pcs / 48pcs ivale rhoqo ukhuseleko njalo njalo Ukuze kumazwe ibhokisi kunye ukwahlula amaqanda
MOQ	3000pcs
Ixesha lokuzisa	Kwiintsuku ezingama-35 emva kokuba i-odolo iqinisekisiwe
Immimiselo yokuhlawula	I-30% idiphozithi ngo-T / T kwangaphambili, ibhalansi emva kokubonisa ikopi ye-B / L.
Iimpawu Product	<ol style="list-style-type: none">1. Umgangatho ophezulu kunye namaxabiso okhuphiswano2. Ukuvavanya i-ASTM3. Eco Friendly4. Ijolise ngokubanzi kuMtshato, itheko, ikhaya, imivalo njl.5. liceramic containers ezinendlela yotshintsho yokuhombisa

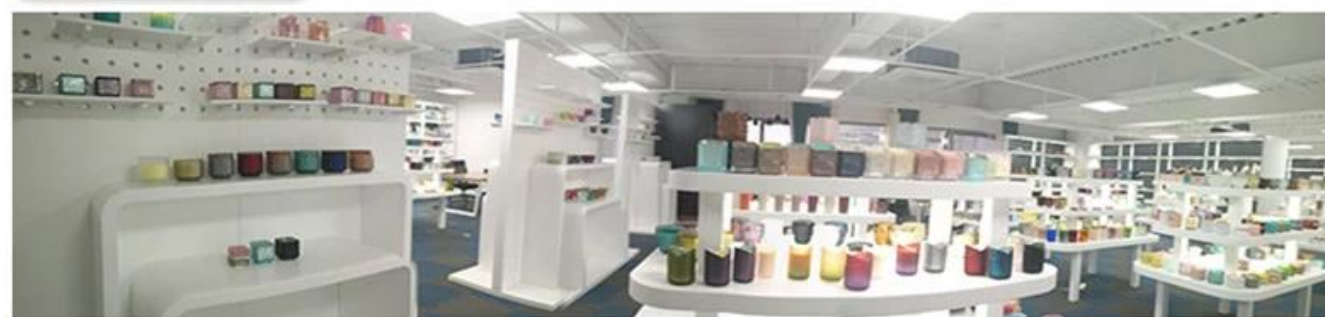
More Product Pictures





Office & Sample Room





Factory Show

* Production Process



▶ Sculpture



▶ Make Moulds



▶ Inject Clay



▶ Shape forming



▶ Roller Forming



▶ Body Finishing



▶ First Firing



▶ Hand Painting



▶ Decaling



▶ Glazing



▶ Decor Firing



▶ Packing



▶ Warehouse



▶ Loading



▶ Shipping



Decoration firing



After decal



Inspection the decal product



Packing



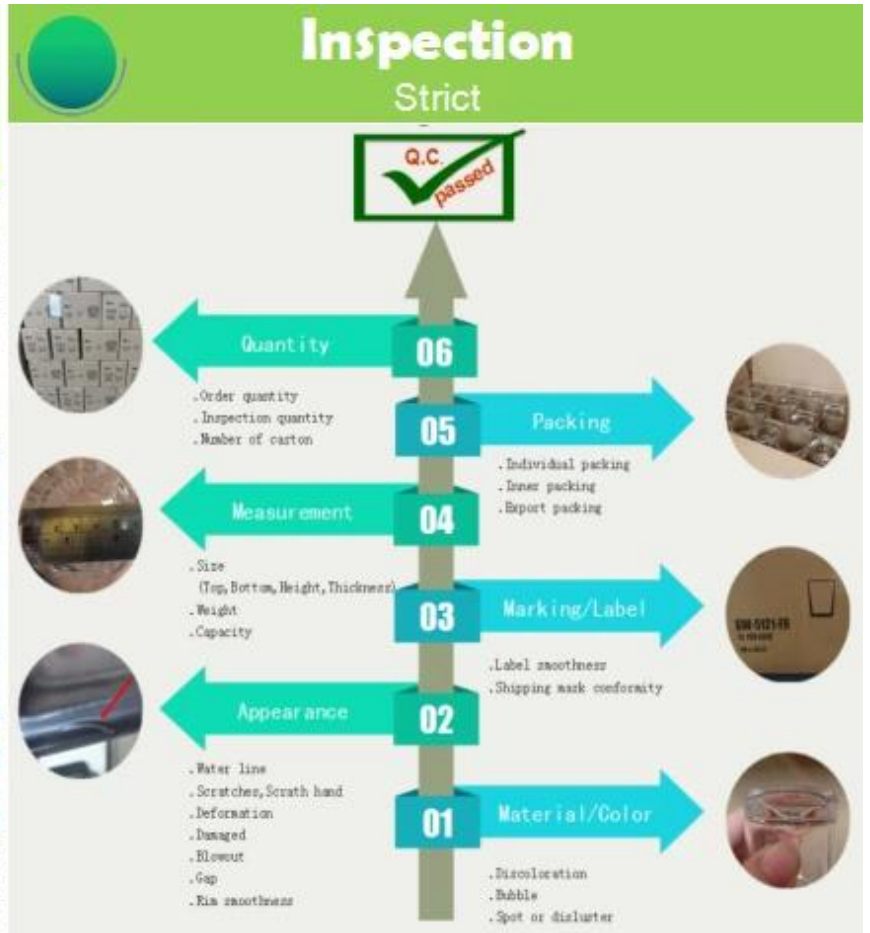
Ready to loading



QC
Professional



Measure
Accurate





Sales Team



Sourcing&Doc Team



Customer Services



Product Designer

Iimpawu zeglasi evuthelweyo ngenyanga

1. Uncedo lwayo kubandakanya ukrolwa kobuninzi, ubuchule, iziphumo zomhlaba, umbala njl.
2. Umgangatho itshekhi enzima kunye nokunyamezelana kobukhulu, ubunzima kunye nemilo kukhulu.
3. Ixabiso liphezulu kwaye imveliso inqunyelwe kwiglasi ekhethekileyo yobugcisa.

Indlela yesicelo

1. Ukuyisebenzisa phantsi kokhokelo lomntu omdala
2. Yihlambe ngamanzi acocekileyo okanye ashushu ngaphambi kokuba uyisebenzise
3. Musa ukubamba umphetho wendebe yeglasi, zama ukuthatha ezantsi okanye isiphatho sayo

Ukulumkela

1. Ibhiya, iwayini ebomvu, iwayini emhlophe, isiselo okanye amanzi ashushu akufuneki agcware kakhulu
2. Ukuthintela ukwenzakalisa isandla sabantwana bakho, nceda ubabeke apho bangenakufikelela khona
3. Kuphapha ukuwa, ukungqubana kunye nefuthe elinamandla
4. Ayifumaneki kwi-oven microwave

5. Ukuyinqanda ukuba ingaphuli, musa ukuyibeka ngqo emlilweni

Ngakumbi [isiphatho sekhandlela](#) okanye nayiphi na iglasi,

Nceda undwendwele iwebhusayithi yethu: <http://www.okcandle.com/>

Okanye apha inokukunceda wazi ngcono kunathi: **FAQ**

[Siliindele isicelo kunye nentsebenziswano.](#)

Lasekhaya umva